



University of  
**Nottingham**  
International College





# Welcome

This guide will help you find the perfect accommodation that suits your needs for when you come to study in Nottingham for the period from September 2022 to April 2023.

**Click on the page links below for useful information:**

[Introduction](#)

[Nottingham](#)

[Living in Nottingham](#)

[Getting around](#)

[Your accommodation options](#)

[Kaplan Living Nottingham](#)

[Room types](#)

[Radford Mill](#)

[Room types](#)

[Stanley House](#)

[Room types](#)

[The Vantage](#)

[Room types](#)

[Compare your options](#)

[Kaplan Living Special Support](#)

[Student starter pack](#)

[How to book](#)

[How to pay](#)

[Accommodation guarantee deadline](#)

[Useful information](#)

[Find out more](#)

We're looking forward to welcoming you to the UK soon. Our dedicated accommodation team is here to support you and guide you through the options that best suit your individual needs.





# Live with confidence

We can't wait for you to join us in the UK at one of our safe and comfortable residences. Our dedicated accommodation team is available to guide you through your options, answer any questions you have, and support you if your situation changes.

## We are here for you

Keeping all our students safe is our top priority. We will continue to have health and safety measures in place, so you can rest assured that our residences and accommodation partners are taking the necessary precautions to protect your wellbeing.

Our dedicated accommodation team is here to discuss your options with you, or if you need help or support at any time.

## Accommodation guarantee deadline

If your course starts in Autumn 2022 or Spring 2023, you're guaranteed a room with us if you accept your offer to study and book your accommodation by the guarantee date. [See all the guarantee dates here.](#)

Don't worry, if you miss the guarantee deadline we'll still do all we can to find you a fantastic place to stay during your course.

## Your accommodation options

In this guide you'll find detailed information about your accommodation option in Nottingham. Once you accept your offer to study, you can log in to our [accommodation portal](#) and reserve your room.

We operate on a first-come, first-served basis and all options are subject to availability. When you log in to our portal, you will be able to see all currently available options, and can pick your preferred room type.





# Living in Nottingham

Situated in the heart of England, Nottingham is a very popular place to live and study. It is a lively, multicultural, big enough to be full of things to do, but small enough for you to feel welcome.

## Experience Nottingham

### Events

Visit the Old Market Square for local arts and crafts fairs, concerts and ice skating. There's even an artificial beach during the summer!

### History

Explore the network of caves hidden beneath the city, or experience the legend of Robin Hood at Nottingham Castle.

### Shopping

Find your favourite brands at the Victoria Centre, or shop for unique items at the smaller stores in Hockley and the Lace Market.

### Nightlife

Visit one of England's oldest pubs, the Ye Olde Trip to Jerusalem (founded around 1189 AD) or enjoy Nottingham's diverse music scene at the legendary Rock City.

### Food

Nottingham has a variety of restaurants and cafés. You could try a traditional English Sunday roast, or sample exciting foods from around the world.

### Sport

Cheer on Nottingham Forest Football Club at the City Ground, or enjoy national and international cricket matches at Trent Bridge.

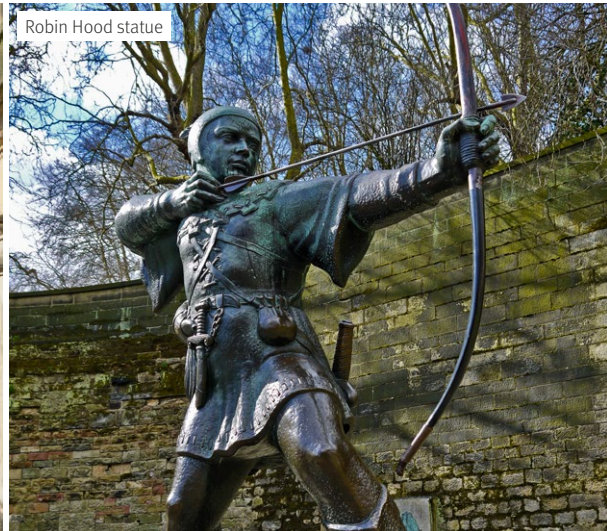
### Outside the city

Take a short trip to visit Wollaton Hall, a beautiful country house and museum which featured as Wayne Manor in the Batman movie The Dark Knight Rises.

Old Market square



Robin Hood statue



Ye Olde Trip to Jerusalem



Wollaton Hall



# Getting around

The residences are conveniently located so you'll be close to supermarkets, shops and restaurants, and benefit from easy access to transport links.

## Transport

### Buses

Nottingham's bus service is the UK's largest public bus network and runs all around the city. It is one of the easiest and most affordable ways to travel.

### Trams

Quick, cost effective and popular with students, trams run from the city centre to the University, as well as to nearby towns.

### Bicycles

Nottingham is a great city for cycling. It has many dedicated many cycle routes, make getting around by bike safe, quick and economical.

### Taxis

The city also has a reliable taxi service, with taxi ranks located all around the city. They're great for short trips, or for when you have heavy luggage.

### Airport

Birmingham International Airport is one of the closest major airports to Nottingham. You can get a coach from Birmingham to Nottingham in under 2 hours.





# Kaplan Living Nottingham

Our comfortable central Nottingham residence has everything you need to feel at home from the moment you arrive.



## Location

In the heart of Nottingham, close to local shops, restaurants, supermarkets, and a 20-minute tram journey to the University of Nottingham International College.



## Private bedrooms

Fantastic modern bedrooms with private bathroom, study area, and storage space. You'll also be able to stay in a single-gender flat, or if you're under 18, live with others in the same age group.



## Private bathroom

Bathroom with washbasin, toilet and shower.



## Kitchen

Fully equipped shared or private kitchens so you can prepare your own meals.



## Social spaces

A range of exciting entertainment facilities ideal for spending time with your new friends. Students have access to a pool table, ping pong table, table football, cinema room, social lounge area, and an outdoor space for events.



## Facilities

You will also be able to use a new study room where you can study alone or work on group projects. There is also a bike storage and a laundry room (usage charges apply).



## Internet

Free high-speed WiFi is available throughout the building, as well as fast and stable broadband in the rooms.



## Bills included

No surprises with electricity, gas and water charges — all bills and maintenance costs are included in the accommodation price.



## Security

On-site concierge 24/7, secure door entry systems, and security cameras for your safety.



## Cleaning

A weekly cleaning service of communal areas and shared kitchen is included in the accommodation cost.

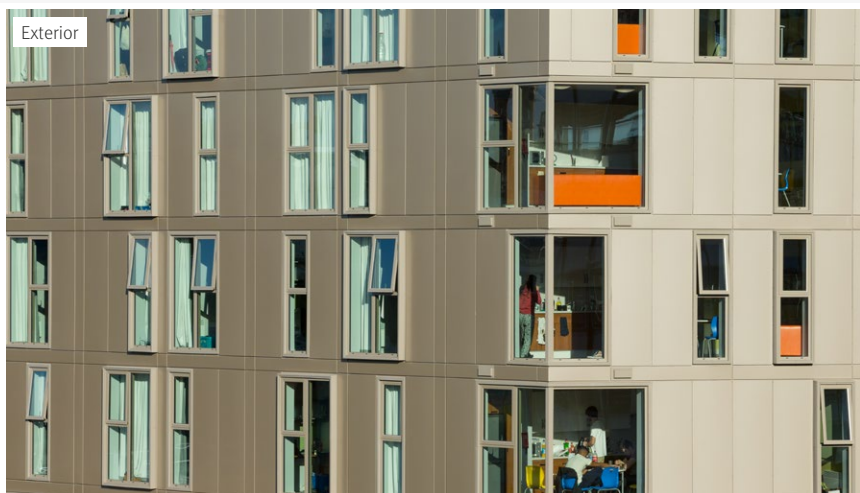


## Kaplan Living Special Support

If you are under the age of 18, or choose to benefit from this service, Wellbeing Coordinators will be available 24/7 to support you.

You can learn more about Kaplan Living Special Support [on this page](#).

**All private bedrooms | City centre location | Social events and activities | Single-gender and under-18 options**



## Classic ensuite

A medium-sized private bedroom in a shared flat of up to 7 students, with a fully equipped shared kitchen.

### Features

#### Private bedroom



- Small double bed
- Wardrobe, bedside unit and storage space
- Desk, chair, shelving, cupboard and pin board

#### Private bathroom



- Shower, toilet and washbasin

#### Shared kitchen

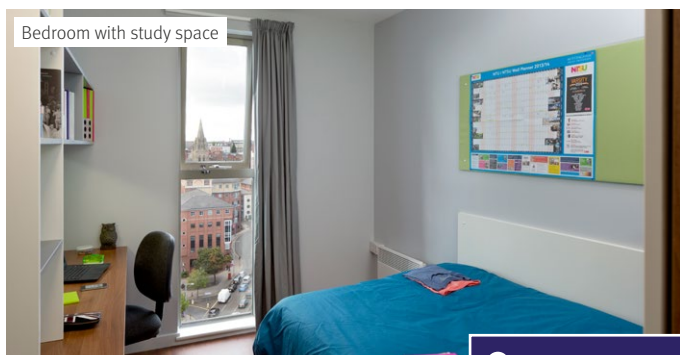
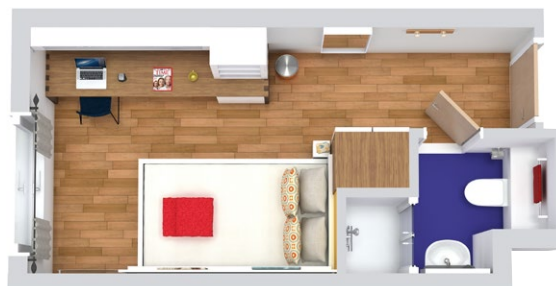


- Oven, hob, fridge-freezer, microwave and cupboard
- Dining area and sofa

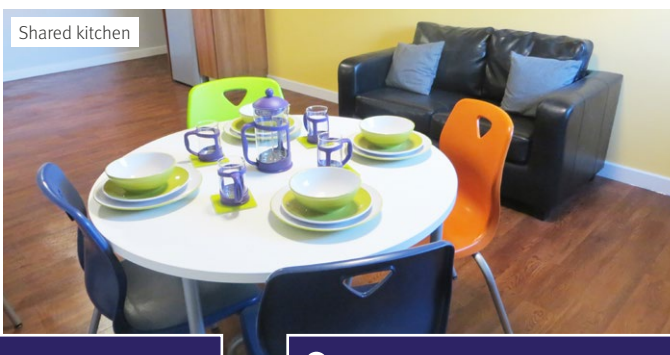
### Floor plan

Approximate room size: 13.5m<sup>2</sup>

Please note: images intended for illustrative purposes only. Actual room layout, contents and furnishings may differ.



Bedroom with study space



Shared kitchen

[Explore accommodation prices and dates](#)

[Explore accommodation availability](#)

## Deluxe ensuite

This private bedroom in a shared flat of up to 5 students is located on the higher floors with great views of the city.

### Features

#### Private bedroom



- Small double bed
- Wardrobe, bedside unit and under-bed storage
- Desk, chair, shelving, cupboard and pin board

#### Private bathroom



- Shower, toilet and washbasin

#### Shared kitchen



- Oven, hob, fridge-freezer, microwave and cupboard
- Dining area and sofa

### Floor plan

Approximate room size: 14.5m<sup>2</sup>

Please note: images intended for illustrative purposes only. Actual room layout, contents and furnishings may differ.



Shared kitchen



Private bedroom

[Explore accommodation prices and dates](#)

[Explore accommodation availability](#)



## Platinum ensuite

An extra-large private bedroom in a shared flat of up to 6 students, with a fully equipped shared kitchen.

### Features

#### Private bedroom



- Small double bed or double bed
- Wardrobe, bedside unit and storage space
- Desk, chair, shelving, cupboard and pin board

#### Private bathroom



- Disabled access bathroom – wet room, hand rails and seat for showering

#### Shared kitchen

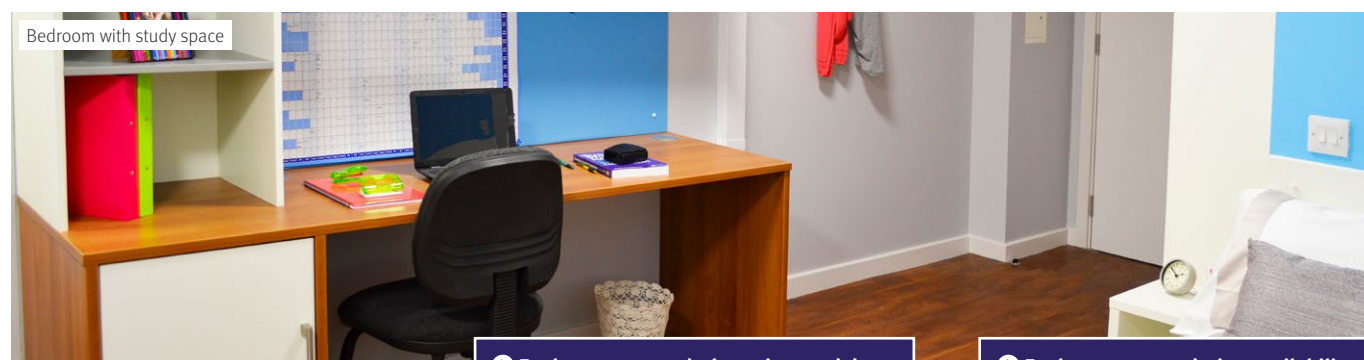


- Oven, hob, fridge-freezer, microwave and cupboard
- Dining area and sofa

### Floor plan

Approximate room size: 17.5m<sup>2</sup>

Please note: images intended for illustrative purposes only. Actual room layout, contents and furnishings may differ.



Bedroom with study space

[Explore accommodation prices and dates](#)

[Explore accommodation availability](#)

## Studio

In this, self-contained studio flat you'll benefit from private kitchen facilities and a private bathroom.

### Features

#### Private bedroom



- Small double bed
- Armchair and coffee table
- Wardrobe, bedside unit and storage space
- Desk, chair, shelving, cupboard and pin board

#### Private bathroom



- Shower, toilet and washbasin

#### Private kitchen

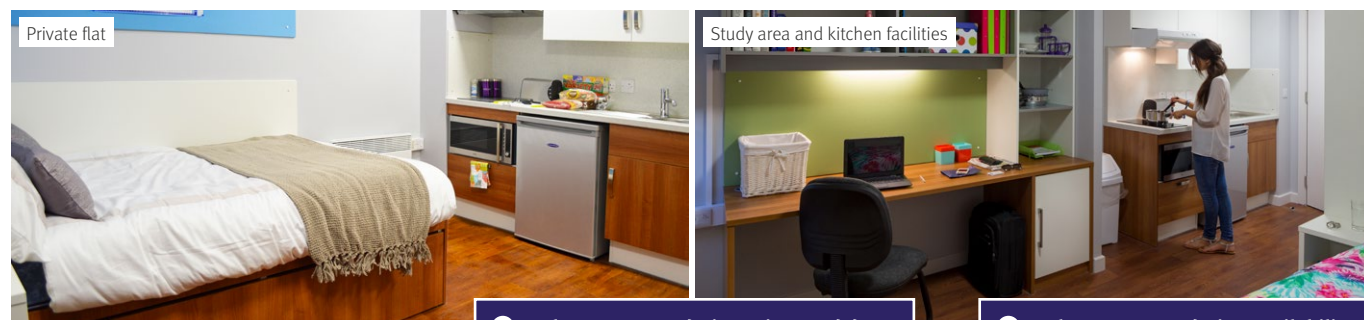


- Oven, hob, refrigerator, microwave and cupboard

### Floor plan

Approximate room size: 20m<sup>2</sup>

Please note: images intended for illustrative purposes only. Actual room layout, contents and furnishings may differ.



Private flat

Study area and kitchen facilities

[Explore accommodation prices and dates](#)

[Explore accommodation availability](#)



# Radford Mill

Enjoy student life staying at this modern accommodation in Nottingham.



### Location

Situated close to the city centre's shops, restaurants, supermarkets, and cafés, and a 20-minute bus journey to the University of Nottingham International College.



### Private bedroom

Modern studio containing a double bed, study desk, chair and storage space.



### Kitchen

The studio features a private kitchen with hob, microwave and a small fridge.



### Social spaces

Shared social spaces including group study rooms, gaming area and a cinema room.



### Facilities

On-site laundry room (usage charges apply), gym, bicycle storage and car parking.



### Internet

High-speed WiFi.



### Bills included

All bills are included in the accommodation price.



### Security

Secure door entry, 24-hour concierge service and security cameras for your safety.



### Cleaning

Regular cleaning service for communal areas.

All private bedrooms | Gym facilities | On-site management team | Modern residence

## Studio

Approximate room size: 22-25m<sup>2</sup>

[Explore accommodation prices and dates](#)

[Explore accommodation availability](#)

Studio



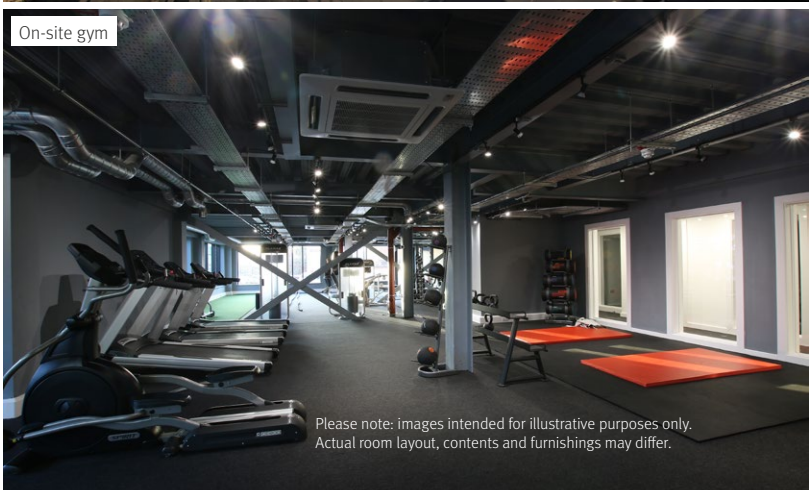
Exterior



Lounge



On-site gym



Please note: images intended for illustrative purposes only. Actual room layout, contents and furnishings may differ.

# Stanley House

In this stylish student residence, you'll enjoy life right in the heart of Nottingham.



### Location

The residence is situated right in the city centre, close to shops, bars and restaurants, and a 20-minute bus journey to the University of Nottingham International College.



### Private bedroom

Fantastic modern studios with small double bed, study area and storage space.



### Private bathroom

Bathroom with shower, washbasin, toilet and storage facilities.



### Kitchen

Fully equipped private kitchen.



### Social spaces

Shared social spaces including a cinema room and an external garden space.



### Facilities

Use of an on-site gym, laundry room (usage charges apply) and secure bike storage.



### Internet

Free high-speed WiFi is available throughout the building.



### Bills included

All bills are included in the accommodation price.



### Security

Secure door entry, overnight on-site management team and 24/7 cameras for your safety.



### Cleaning

Regular cleaning service of shared areas.

All private bedrooms | Fantastic city location | Modern residence | On-site management team

## Studio

Approximate bedroom size: 22 m<sup>2</sup>

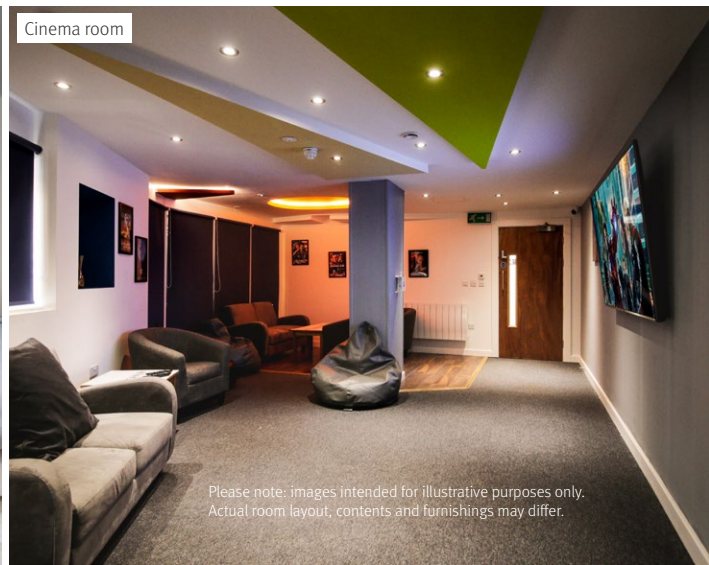
[Explore accommodation prices and dates](#)

[Explore accommodation availability](#)

Private bedroom



Cinema room



External area



Private kitchen





# The Vantage

Offers modern living with fantastic views of the city's impressive skyline.



## Location

The residence is located close to shops, bars and restaurants, and a 17-minute tram journey to the International College.



## Private bedroom

Modern ensuite containing a small double bed, study desk, chair, stool, open closet, TV and storage space.



## Private bathroom

Bathroom with shower, washbasin, and toilet.



## Kitchen

Fully equipped shared kitchen.



## Social spaces

Students have access to a study area, cinema, games room, mini golf, upper floor lounge, courtyard and garden.



## Facilities

Use of an on-site gym, laundry room (usage charges apply) and secure bike storage.



## Internet

Free high-speed WiFi is available throughout the building.



## Bills included

All bills are included in the accommodation price.



## Security

Secure door entry, 24-hour concierge service and security cameras for your safety.



## Cleaning

Regular cleaning service of shared areas.

All private bedrooms | Stylish residence | Great views over the city | 24-hour concierge service

## Classic ensuite

Approximate bedroom size: 13.5m<sup>2</sup>

[Explore accommodation prices and dates](#)

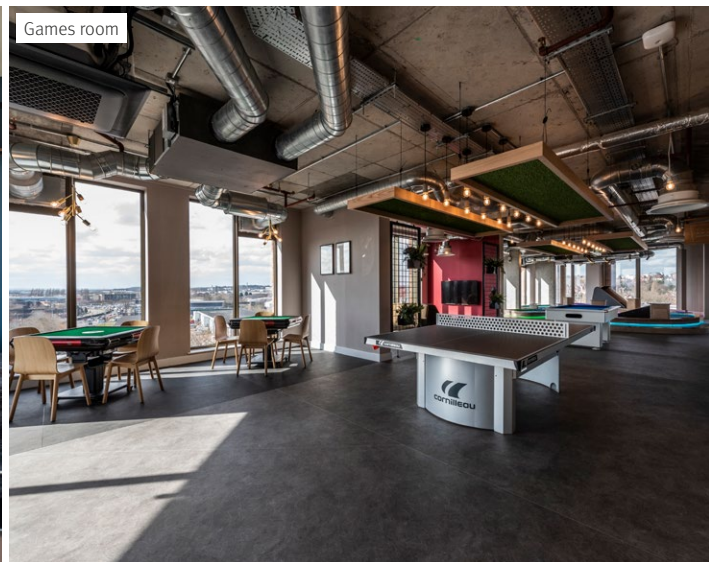
[Explore accommodation availability](#)

Private bedroom

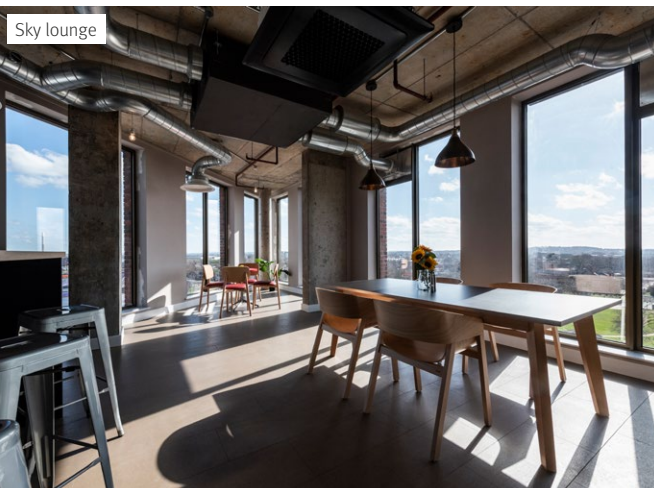


Please note: images intended for illustrative purposes only. Actual room layout, contents and furnishings may differ.

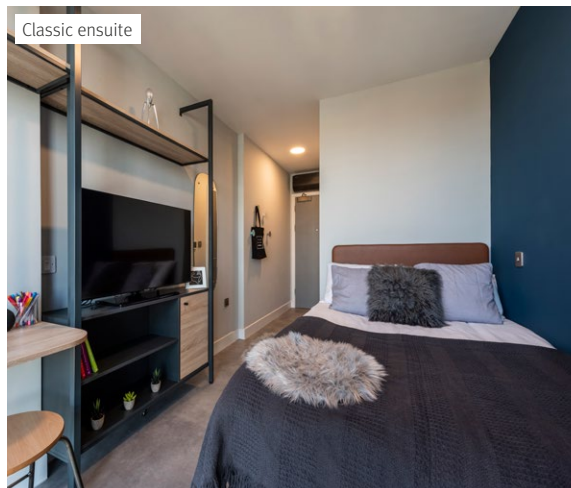
Games room



Sky lounge



Classic ensuite



Private bathroom



[Introduction](#)

[Nottingham](#)

[Accommodation](#)

[Compare your options](#)

[Special Support](#)

[How to book](#)

[How to pay](#)

[Information](#)




# Compare your options

Use the table below to see which options suit you, and select your preferences when booking your room.




	Kaplan Living Nottingham				Radford Mill	Stanley House	The Vantage
Room type	Classic ensuite 13.5m <sup>2</sup>	Deluxe ensuite 14.5m <sup>2</sup>	Platinum ensuite 17.5m <sup>2</sup>	Studio 20m <sup>2</sup>	Studio 22-25m <sup>2</sup>	Studio 22m <sup>2</sup>	Classic ensuite 13.5m <sup>2</sup>
Approx. size							
Students per flat	up to 7	up to 5	up to 6	Private	Private	Private	up to 9
Bedroom	Private	Private	Private	Private	Private	Private	Private
Small double bed	✓	✓	✓	✓		✓	✓
Double bed					✓		
Study desk, chair, wardrobe, shelves, under-bed storage and notice board	✓	✓	✓	✓	✓	✓	✓
Coffee table with chair				✓			
Bathroom	Private	Private	Private	Private	Private	Private	Private
Shower cubicle, washbasin and toilet	✓	✓		✓	✓	✓	✓
Disabled access bathroom wet room, hand rails and seat for showering			✓				
Kitchen	Shared	Shared	Shared	Private	Private	Private	Shared
Hob, refrigerator, microwave and cupboard	✓	✓	✓	✓	✓	✓	✓
Seating lounge	✓	✓	✓				✓
WiFi	✓	✓	✓	✓	✓	✓	✓
Available to	All students aged 16 and over	All students aged 18 and over	All students aged 16 and over	All students aged 16 and over	All students aged 18 and over	All students aged 18 and over	All students aged 18 and over
Typical journey time to the College	20 minutes by tram				20 minutes by bus	20 minutes by bus	17 minutes by tram
Kaplan Living Special Support	Mandatory for students under 18 and optional for students aged 18 or over						

## There are lots of benefits when you book accommodation with Kaplan


### For your comfort

-  All private bedrooms
-  Your own study space
-  Free WiFi




### For your convenience

-  Convenient city location
-  Great transport links
-  On-site laundry

### For your safety

-  On-site support staff
-  Secure door entry
-  Free contents insurance

### For your enjoyment

-  Games rooms
-  TV or cinema room
-  Fantastic social spaces

While every effort will be made to allocate your first choice, we cannot guarantee this. We operate on a first-come, first-served basis and all options are subject to availability, therefore you may be offered another accommodation type or location, or we may refer you to another provider.






# Kaplan Living Special Support





Enjoy enhanced support in our Kaplan Living residence.

All residents at Kaplan Living Nottingham will receive comprehensive support throughout their stay. You can also opt to include additional assistance by adding Kaplan Living Special Support to your package; if you're under 18, this service is mandatory for your wellbeing.

Kaplan Living Special Support is a premium service, with an extra level of help for you making the transition to life in the UK. It will give you peace of mind, and help you live with confidence.

For a fee of £300, you'll have 24/7 access to Wellbeing Coordinators, who will be permanently based at the residence. They can help you with things like:

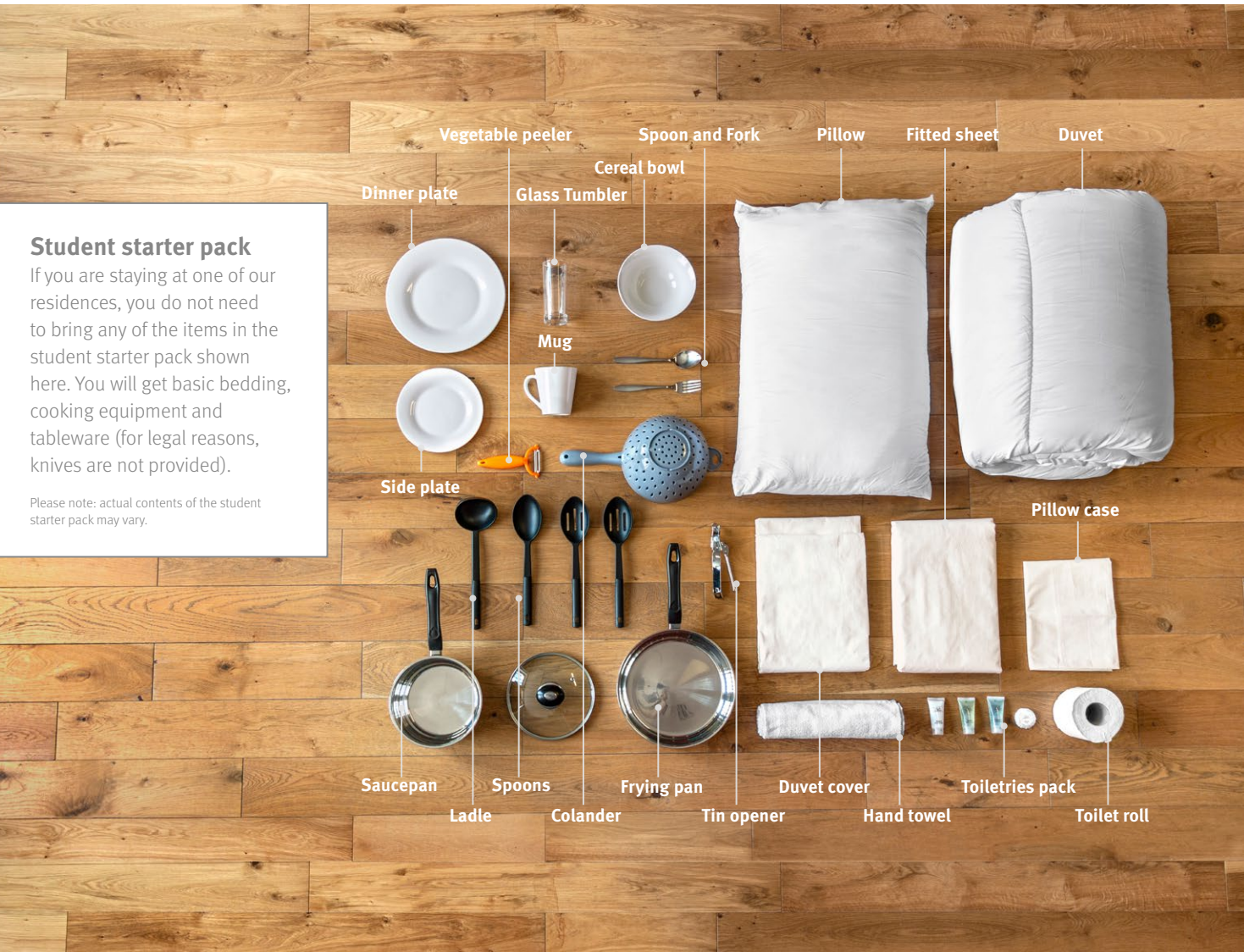
-  Answering questions from you or your parents before you arrive in the UK
-  Helping you get settled into your new home
-  Making medical or dental appointments

-  Handling emergencies such as medical visits
-  Getting involved with the college and residence community
-  Arranging calls with your parents so you can keep in touch
-  Ensuring that you receive the care and support you need

## Student starter pack

### Free items for your arrival

To make your move as easy as possible, we provide all students with a free 'student starter pack' with many of the basic items you'll need as soon as you move in. It means that you won't have to rush around the shops on your first day, and can settle right into your new accommodation.



# How to book

You can book your accommodation by following the steps below.

## Step 1 Choose your room

Check the [dates and prices on the accommodation page](#) on our website, and choose the option that matches your course dates.

## Step 2 Log in to accommodation portal

If you have applied and received an offer of study, you'll need to accept your offer first. If you indicated on the application form you would like Kaplan-arranged accommodation, you'll then receive login details for the [accommodation portal](#) via email. If you have not received anything, please [contact us](#) and we'll arrange to resend it to you.

## Step 3 Confirm your room selection

Use your login details to log into the [accommodation portal](#). Here, you will be able to see available options and you can choose your preferred room type.

## Step 4 Kaplan will allocate your room

Once we have allocated your room, we will send you an email asking you to log back in to the [accommodation portal](#) to confirm your booking. You will need to sign your accommodation agreement electronically, nominate a guarantor and make your first accommodation payment.

## Step 5 Confirmation of booking

Once you have completed the required steps, we will confirm your booking.

## Step 6 Your arrival confirmation

When you are ready to come to the UK and have booked a flight, you will need to confirm your arrival details by completing the online [Pre-Arrival Form](#). The College will be able to book and confirm transfers for you; details are provided in the [Pre-Arrival Guide](#). Please submit your arrival details at least 2 weeks before you fly to ensure the College and your accommodation are prepared for your arrival.



# How to pay

Before you arrive, you can pay your accommodation fees using one of the methods below:

## Method 1

### Bank transfer / credit or debit card to Flywire.

1. Visit [UniNottinghamLC.flywire.com](https://UniNottinghamLC.flywire.com)
2. Choose your country and the amounts you are paying in Pounds Sterling
3. Choose your payment method and make your payment to Flywire
4. Enter the payer details and those of the student you are paying for
5. Track and confirm your payment by email, SMS or by logging into [UniNottinghamLC.flywire.com](https://UniNottinghamLC.flywire.com)

## Method 2

### Bank draft or electronic transfer in Pounds Sterling to:

**Bank Account Name:** Kaplan Nottingham Limited

**Bank Name:** HSBC Bank plc

**Sort Code:** 40-11-60

**Bank Account Number:** 60085723

**BIC:** HBUKGB4B

**IBAN NO:** GB95HBUK40116060085723

**Bank Address:** 60 Queen Victoria Street, London, EC4N 4TR

## Payments

For your first payment, you can pay any amount from a minimum of £1,000 to the full accommodation cost. This is required to secure your booking and should be made at the time of booking before your arrival in the UK. Depending on your accommodation option, the remaining amount is paid when you register for your first term, and before your second term (if applicable).

# Accommodation guarantee deadline

You'll be guaranteed accommodation if you accept your offer to study and book your accommodation before the dates below.

## Autumn 2022

Your accommodation contract start month	Guarantee date to book accommodation
September 2022	1 August 2022
October 2022	1 September 2022

## Spring 2023

Your accommodation contract start month	Guarantee date to book accommodation
January 2023	1 December 2022
February 2023	1 January 2023
April 2023	1 March 2023

Don't worry – if you miss the guarantee deadline, you can still login to the accommodation portal to see what options are available to you. If no options are available at the time, you can join our waitlist, and we'll do everything we can to help you find a great place to live in Nottingham.



# Useful information

You can find some helpful information below to guide you through your accommodation application.

## Accommodation Agreement

The Accommodation Agreement is a contract confirming the details of your accommodation. By signing your Accommodation Agreement, you are agreeing, under UK law, to pay for your accommodation for the full length of the accommodation contract.

## Accommodation confirmation

You must complete the required steps in order to secure your booking. If you fail to do so by the accommodation confirmation date, your agreement may be cancelled and your room given to another student to book. If your Accommodation Agreement is cancelled, and you tell us that you would still like to book Kaplan-arranged accommodation, you will be offered the next available room.

## Accommodation length change

You may not change your contract length after you have booked and signed your Accommodation Agreement.

## Accommodation portal login

You'll receive your login details via email once you have accepted your study offer.

## First payment

The first payment is to secure your accommodation along with the signed Accommodation Agreement.

## Guarantors

A guarantor is someone who will be legally responsible for any accommodation fees you are unable to or fail to pay.

## Kaplan Living Special Support

On top of our comprehensive residence core support, we also offer the Kaplan Living Special Support package upgrade. With this service, Wellbeing Coordinators will be on hand to help you settle into life in the UK, assist with any problems you encounter, and ensure that you can live and study with us safely. This 24/7 support is available to all students for an additional fee of £300 — just tick the box when making your booking via the accommodation portal to confirm you'd like to sign up to the service. This is an optional extra service for students over the age of 18; for those under 18, it is mandatory for their wellbeing.

## Moving into your room

You will be able to move into your room from the start date of your contract, as long as you have sent us your signed Accommodation Agreement and first payment.

## Refunds

When your Accommodation Agreement is cancelled and you decide not to take another offered room, refund of any fees paid will only be granted in line with Kaplan International Pathways' Terms and Conditions, and may be subject to an administration fee being deducted. If you leave the College for any reason after you arrive, accommodation fees will not be refunded.

## Under 18s

The College will accommodate students under 18 years of age in a single-sex flat with other students under 18 years old. Students who are under the age of 18 on arrival in the UK may be asked to pay all their accommodation fees before they arrive, and are advised to stay in either Kaplan or university-arranged accommodation.

## Visa

If your visa application is unsuccessful, please send a copy of your visa refusal documents (or other evidence) to your Admissions Adviser for review. A decision will then be made regarding eligibility for refund in line with the company's terms and conditions.







**University of  
Nottingham**  
International College

## Find out more

Visit the links below or contact us for more information.  
We look forward to welcoming you to Nottingham!

### Useful links:

- 🔗 [Accommodation in Nottingham](#)
- 🔗 [Accommodation dates and prices](#)
- 🔗 [Prepare for your studies at the College](#)
- 🔗 [University of Nottingham](#)
- 🔗 [Student life in Nottingham](#)
- 🔗 [Guide to Nottingham](#)

### Social media:

Search: UniofNottinghamIC



#KaplanLife

### Contact details:

✉ University of Nottingham International College  
No. 1 Nottingham Science Park  
Jesse Boot Avenue  
Nottingham, NG7 2RU

@ pathways.accommodation@kaplan.com

### For accommodation queries with the Central Accommodation Team:

☎ +44 (0)20 7045 5060

### For arrival queries with the College:

☎ +44 (0)11 5684 9980