



Welcome

This guide will help you find the perfect accommodation that suits your needs for when you come to study in London for the period from September 2022 to April 2023.

Click on the page links below for useful information:

[Introduction](#)

[London](#)

[Living in London](#)

[Getting around](#)

[Your accommodation options](#)

[Chapter Spitalfields](#)

[Room types](#)

[Stratford One](#)

[Room types](#)

[The Stay Club Kentish Town](#)

[Room types](#)

[Moonraker Point](#)

[Room types](#)

[Chelsea Lightfoot Hall](#)

[Room types](#)

[Compare your options](#)

[Kaplan Living Special Support](#)

[Student starter pack](#)

[How to book](#)

[How to pay](#)

[Accommodation guarantee deadline](#)

[Useful information](#)

[Find out more](#)

We're looking forward to welcoming you to the UK soon. Our dedicated accommodation team is here to support you and guide you through the options that best suit your individual needs.



[Introduction](#)

[London](#)

[Accommodation](#)

[Compare your options](#)

[Special Support](#)

[How to book](#)

[How to pay](#)

[Information](#)

Live with confidence

We can't wait for you to join us in the UK at one of our safe and comfortable residences. Our dedicated accommodation team is available to guide you through your options, answer any questions you have, and support you if your situation changes.

We are here for you

Keeping all our students safe is our top priority. We will continue to have health and safety measures in place, so you can rest assured that our residences and accommodation partners are taking the necessary precautions to protect your wellbeing.

Our dedicated accommodation team is here to discuss your options with you, or if you need help or support at any time.

Accommodation guarantee deadline

If your course starts in Autumn 2022 or Spring 2023, you're guaranteed a room with us if you accept your offer to study and book your accommodation by the guarantee date. [See all the guarantee dates here.](#)

Don't worry, if you miss the guarantee deadline we'll still do all we can to find you a fantastic place to stay during your course.

Your accommodation options

In this guide you'll find detailed information about your accommodation options in London. Once you accept your offer to study, you can log in to our [accommodation portal](#) and reserve your room.

We operate on a first-come, first-served basis and all options are subject to availability. When you log in to our portal, you will be able to see all currently available options, and can pick your preferred room type.



Living in London

London is hugely vibrant and diverse. It's ranked as the #1 student city in the world by QS Best Student Cities 2022, and is a centre for world-class education, culture and creativity.

Experience London

History

Learn about London's culture: venture into the city's past at the Museum of London, or explore hundreds of interesting science and nature exhibitions at the Natural History Museum.

Art and Design

Admire modern art from around the world at the Tate Modern gallery, or discover innovative new products and concepts at the Design Museum.

Shopping

London is home to world-famous Oxford Street, as well as Westfield London and Westfield Stratford, 2 of Europe's largest shopping centres, with hundreds of stores to explore.

Nightlife

Have a great night out with your new friends: visit some of the best pubs, clubs and bars in the UK.

Music and theatre

Experience top-class entertainment at one of Europe's biggest arenas, the O2, or enjoy a play or musical show at a theatre in London's West End.

Food

Try new and exciting food from around the world: enjoy a traditional English afternoon tea, spicy Indian curries on Brick Lane, or take a walk through Chinatown to sample the city's finest Chinese cuisine.

Nature

Wander through Hyde Park, one of London's many beautiful green public spaces, or enjoy a boat cruise along the River Thames.

Sport

Watch some of the world's greatest football teams play at Wembley Stadium, see professional tennis at Wimbledon, or visit Queen Elizabeth Olympic Park, home of the London 2012 games.

Outside of London

Trains from London can take you almost anywhere in the UK. Visit the historic cities of Cambridge and Oxford, or spend a day by the sea in Brighton.

Houses of Parliament



Getting around

All student residences are conveniently located, so you'll be close to supermarkets, shops and restaurants, and benefit from easy access to transport links.

Transport

🚇 The Underground

The vast underground rail network, also known as the 'Tube', is the quickest and easiest way to travel.

🚌 Buses

Ride on a red London bus: they are an easy and great value way to see the city's sights.

🚆 Trains

London has frequent rail services to major UK cities, airports and other destinations. Continental Europe is only a train ride away. The Eurostar rail service runs fast trains to France, Belgium and the Netherlands from London St. Pancras International station.

🚢 Boats

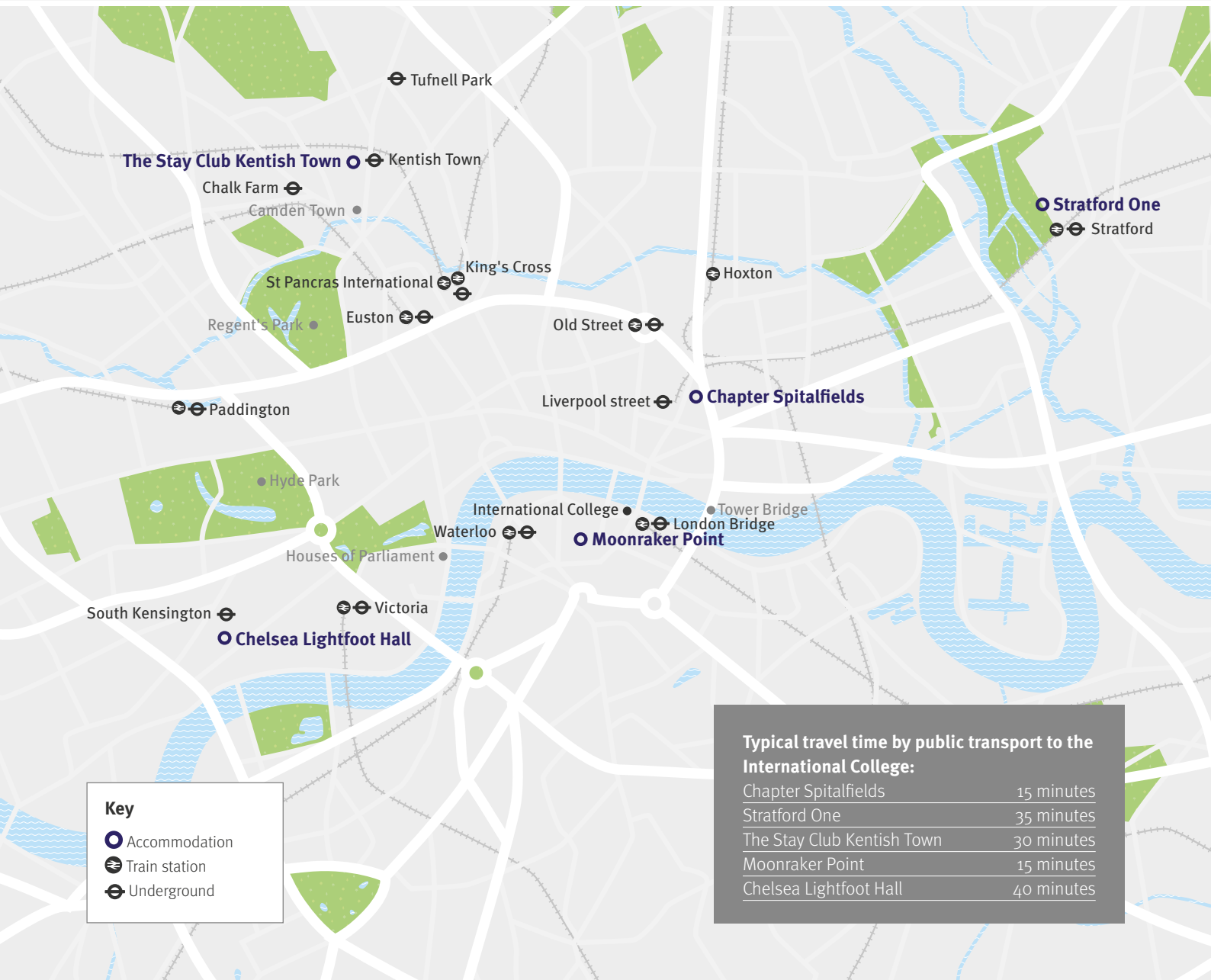
Catch a River Bus along the Thames and see attractions such as the Houses of Parliament and the Tower of London.

🚗 Taxis

Although they are more expensive than public transport, taxis (or 'black cabs') can be convenient for shorter journeys or when you are travelling with heavy luggage.

🚲 Bicycles

London also has a popular bicycle hire scheme called 'Santander Cycles'. Once you have paid the £2 bike access fee for the day, the first 30 minutes is free!



Chapter Spitalfields

Offers modern living with breath-taking views of the city’s incredible skyline.



Location
Great location in East London, close to a wide range of shops, restaurants and markets.



Private bedroom
Stylish studio containing a small double bed, study desk and storage space.



Private bathroom
Bathroom with shower, washbasin, toilet and storage facilities.



Kitchen
Fully equipped private kitchen.



Social spaces
Shared social spaces including study rooms, karaoke rooms, games area, private cinema, upper floor bar and café, library. You can also use the shared spaces and attend the social events at any of the other Chapter properties in London.



Facilities
Use of an on-site gym, courtyard and in-house laundry (usage charges apply).



Internet
High-speed WiFi.



Bills included
All bills are included in the accommodation price.



Journey time to class
Just a 25-minute walk to the College or a 15-minute bus journey to the College.



Cleaning
Regular cleaning service of shared areas.



Security
Secure door entry, overnight on-site management team and 24/7 cameras for your safety.

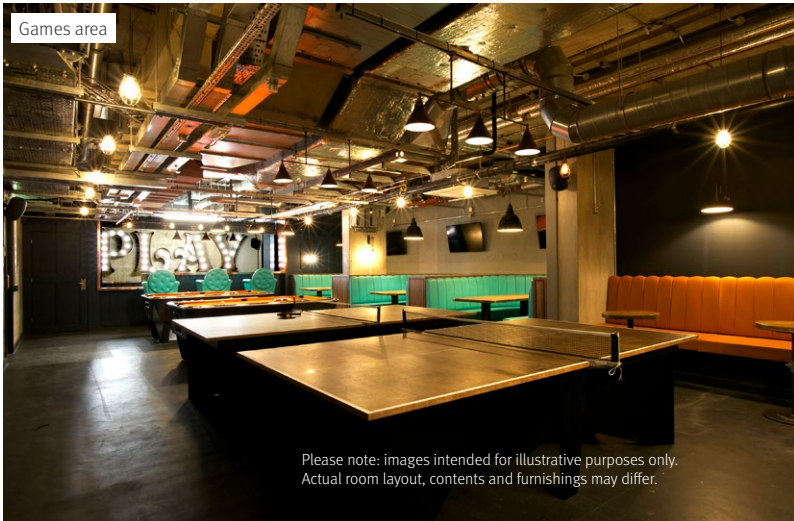
Available to students aged 18 years and over only | All private bedrooms | Amazing social spaces | Stunning views across the city

Bronze studio

Approximate bedroom size: 14m²

[Explore accommodation prices and dates](#)

[Explore accommodation availability](#)



Please note: images intended for illustrative purposes only. Actual room layout, contents and furnishings may differ.

Stratford One

Student accommodation with fantastic views of London Stadium and Queen Elizabeth Olympic Park.



Location

Located in Stratford, with great views of London Stadium and Queen Elizabeth Olympic Park, close to Westfield Stratford shopping centre, restaurants and transport links.



Private bedroom

Fantastic classic ensuite with study desk, chair, wardrobe and storage space.



Private bathroom

Bathroom with shower, washbasin, toilet and storage facilities.



Kitchen

Fully equipped shared kitchen.



Social spaces

Access to a range of common rooms with table games, cinema room, a large courtyard and sky lounge on the 24th floor.



Facilities

Laundry room (usage charges apply), private and communal study areas.



Internet

Free high-speed WiFi is available throughout the building, including fast and stable broadband in all bedrooms.



Bills included

All bills are included in the accommodation price.



Journey time to class

A 10-minute walk to Stratford station followed by a 20-minute tube journey to London Bridge station, then a 5-minute walk to the College.



Cleaning

Regular cleaning service of shared areas.



Security

Secure door entry, overnight on-site management team and 24/7 security cameras for your safety.

Available to students aged 18 years and over only | All private bedrooms | Fantastic location next to Queen Elizabeth Olympic Park

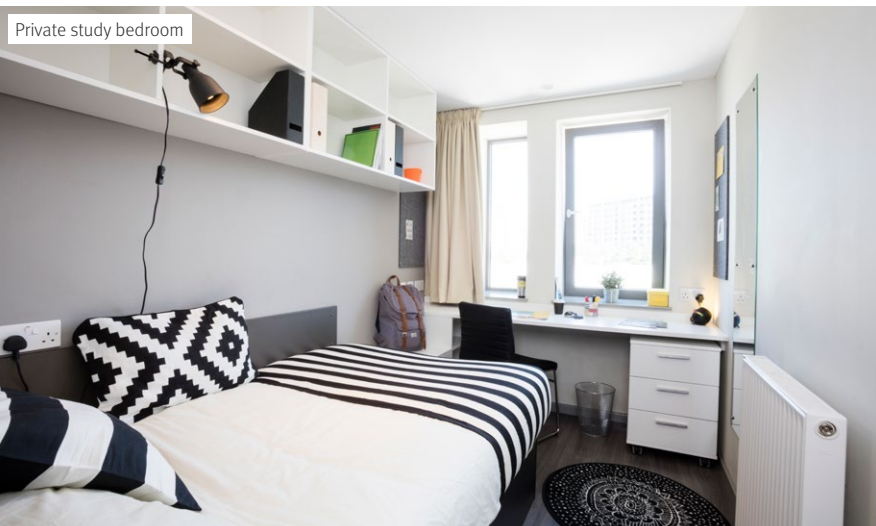
Classic ensuite

Approximate bedroom size: 13m²

[Explore accommodation prices and dates](#)

[Explore accommodation availability](#)

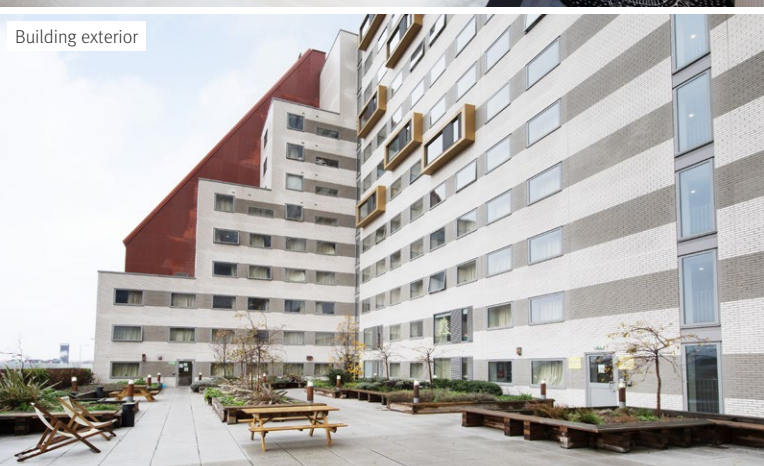
Private study bedroom



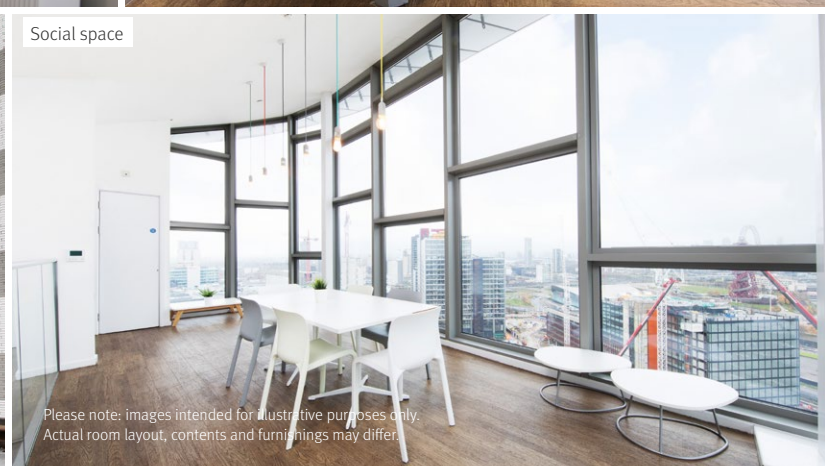
Games lounge



Building exterior



Social space



Please note: images intended for illustrative purposes only. Actual room layout, contents and furnishings may differ.

The Stay Club Kentish Town

Enjoy living at this stylish accommodation in a vibrant area with plenty to see and do.

Available to
students aged
16–17 only



Location

Conveniently located close to many shops, supermarkets, restaurants, and the beautiful Hampstead Heath park.



Private bedroom

Fully equipped with a double bed, as well as an additional adjustable bed for occasional overnight visitors. The room also features a study space, kitchenette, and plenty of storage.



Bathroom

Bathroom with shower, washbasin and toilet.



Kitchen

Fully equipped private kitchen.



Social spaces

Access to a lounge area where students can play games, study, meet friends and relax at the café.



Facilities

On-site gym, bicycle storage and in-house laundry room (usage charges apply).



Internet

High-speed WiFi available throughout the building.



Bills included

No surprises with electricity, gas and water charges — all bills and maintenance costs are included in the accommodation price.



Journey time to class

Around 30 minutes in total: a 5-minute walk to Kentish Town underground station, then 20 minutes by Tube to London Bridge station, and finally a 5-minute walk to the College.



Security

Secure door entry, on-site management team, overnight security and 24/7 security cameras for your safety.



Cleaning

Regular cleaning service of shared areas. Cleaning of individual student rooms is available for an additional charge.



Kaplan Living Special Support

If you are under the age of 18, Wellbeing Coordinators will be available to support you.

You can learn more about Kaplan Living Special Support [on this page](#).

Available to students aged 16 and 17 years only | All private studios | On-site café and cinema | On-site management team

Studio

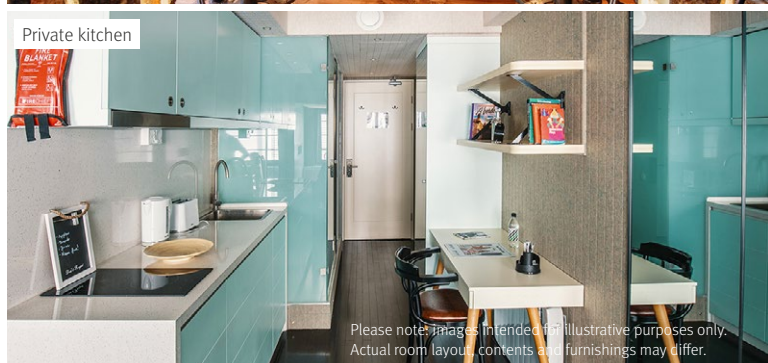
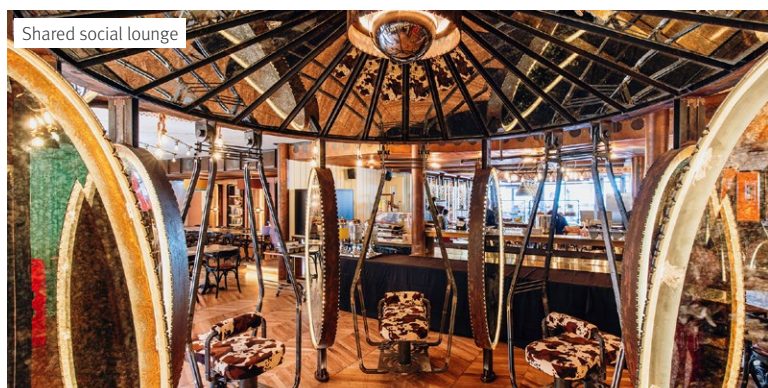
Approximate bedroom size: 13–16m²

Premium studio

Approximate bedroom size: 18–24m²

➤ Explore accommodation prices and dates

➤ Explore accommodation availability



Please note: images intended for illustrative purposes only. Actual room layout, contents and furnishings may differ.

Moonraker Point

Make the most out of student life in London at this modern residence.



Location

Located in the thriving Zone 1 borough of Southwark, within walking distance of the Tate Modern, the South Bank, and the Borough Market.



Private bedroom

Modern ensuite containing study desk, chair, wardrobe and underbed storage space.



Private bathroom

Bathroom with shower, washbasin, toilet and storage facilities.



Kitchen

Fully equipped shared kitchen.



Social spaces

Students have access to a study room and a range of entertainment facilities, such as a games area and TV room.



Facilities

On-site laundry room (usage charges apply).



Internet

Free high-speed WiFi is available throughout the building, including fast and stable broadband in all bedrooms.



Bills included

All bills are included in the accommodation price.



Journey time to class

A 15-minute walk to the College.



Cleaning

Regular cleaning service of shared areas.



Security

Secure door entry, overnight on-site management team and 24/7 security cameras for your safety.

Available to students aged 18 years and over only | All private bedrooms | Convenient location close to the College

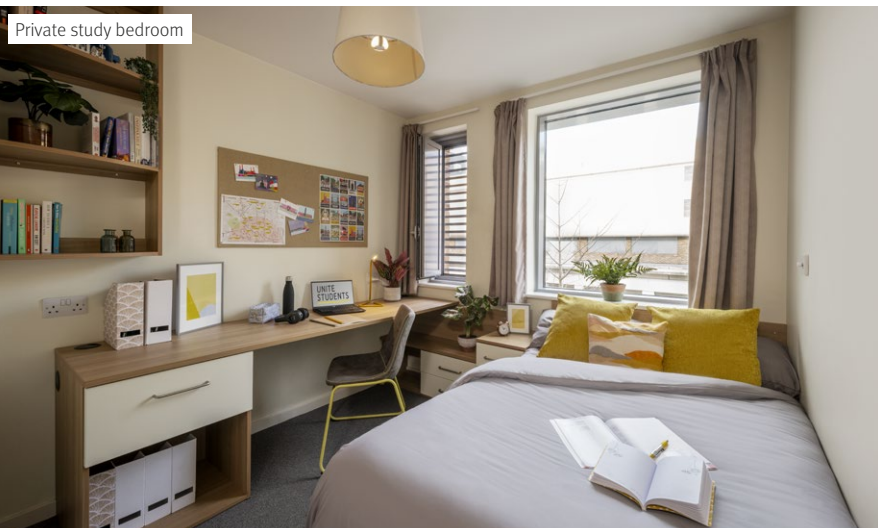
Classic ensuite

Approximate bedroom size: 12.5m²

[Explore accommodation prices and dates](#)

[Explore accommodation availability](#)

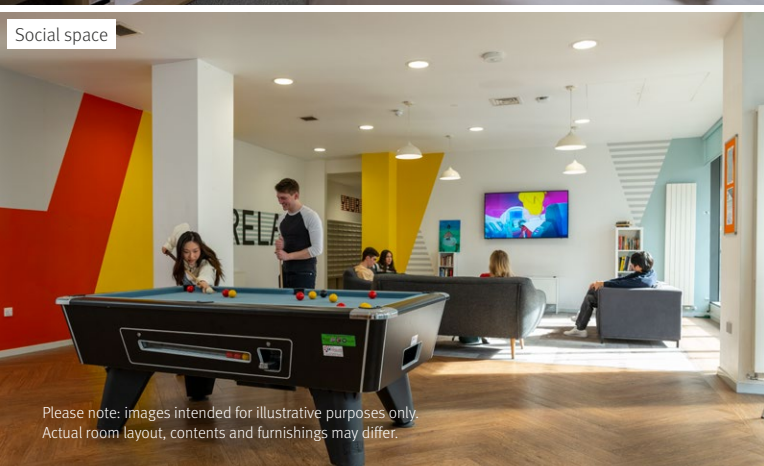
Private study bedroom



Building exterior



Social space




Please note: images intended for illustrative purposes only. Actual room layout, contents and furnishings may differ.

Classic ensuite




Chelsea Lightfoot Hall

Feel at home in a comfortable, modern student residence in a prestigious area in London.




Location

Located in a vibrant area in Chelsea with a wide range of cafes, restaurants, bars and shops.




Social spaces

Students have access to a communal room with TV.




Journey time to class

Around 40 minutes in total: a 15-minute walk to South Kensington underground station, then 15 minutes by tube to Monument station, and finally a 10-minute walk to the College.




Private bedroom

Modern studio containing study desk, chair, TV, wardrobe and underbed storage space.




Facilities

On-site laundry room (usage charges apply).




Cleaning

Regular cleaning service of shared areas.




Private bathroom

Bathroom with shower, washbasin, toilet and storage facilities.




Internet

Free high-speed WiFi is available throughout the building.




Security

Secure door entry, overnight on-site management team and 24/7 security cameras for your safety.



Kitchen

Fully equipped private kitchen.



Bills included

All bills are included in the accommodation price.

Available to students aged 18 years and over only | All private studios | Sapphire studios have great views across the city

Platinum studio

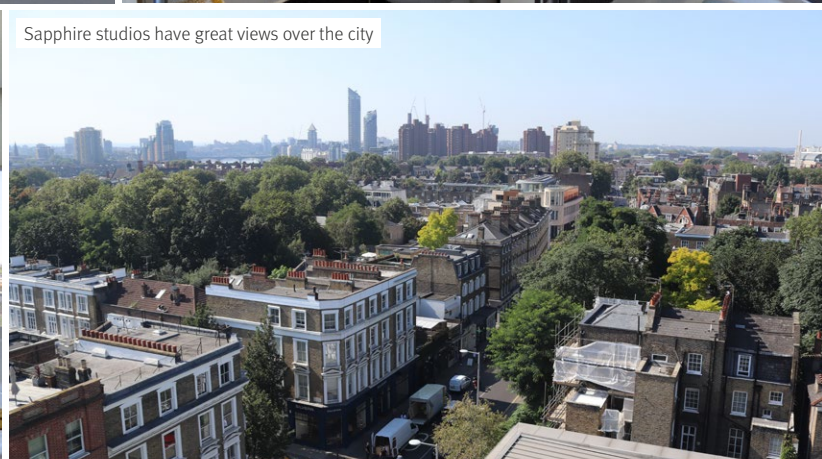
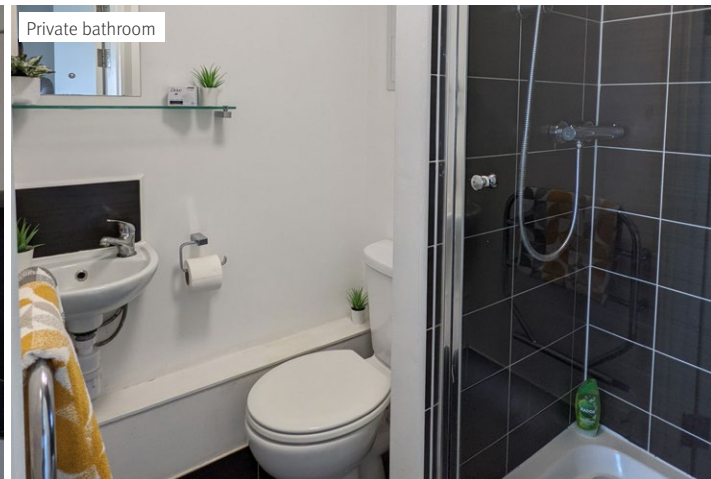
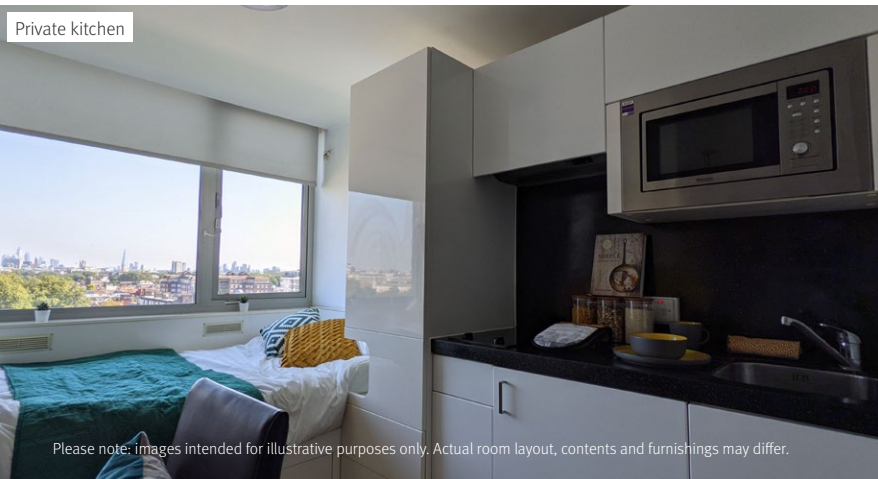
Approximate bedroom size: 11–14m²

▶ Explore accommodation prices and dates

Sapphire studio

Approximate bedroom size: 11–14m²

▶ Explore accommodation availability






Compare your options

Use the table below to see which options suit you, and select your preferences when booking your room.




	Chapter Spitalfields For all students aged 18 and over	Stratford One For all students aged 18 and over	The Stay Club Kentish Town For all students aged 16 and 17	Moonraker Point For all students aged 18 and over	Chelsea Lightfoot Hall For all students aged 18 and over	
Room type	Bronze studio	Classic ensuite	Studio	Premium studio	Classic ensuite	Platinum studio
Approximate size	14m ²	13m ²	13–16m ²	18–24m ²	12.5m ²	11–14m ²
Students per flat	Private	up to 9	Private	Private	Private	Private
Bedroom	Private	Private	Private	Private	Private	Private
Study desk, chair, wardrobe and storage space	✓	✓	✓	✓	✓	✓
Double bed			✓	✓		
Small double bed	✓	✓			✓	✓
Special features			Additional bed	Additional bed and living space		Views over the city
WiFi	✓	✓	✓	✓	✓	✓
Bathroom	Private	Private	Private	Private	Private	Private
Shower cubicle, washbasin and toilet	✓	✓	✓	✓	✓	✓
Kitchen	Private	Shared	Private	Private	Shared	Private
Self-catering and fully equipped	✓	✓	✓	✓	✓	✓
On-site gym	✓		✓	✓		
Typical journey time to the College	15 minutes by bus	35 minutes by tube	30 minutes by tube		15 minutes on foot	40 minutes by tube
Sapphire studio						11–14m ²

There are lots of benefits when you book accommodation with Kaplan




For your comfort

-  All private bedrooms
-  Your own study space
-  Free WiFi




For your convenience

-  Convenient city location
-  Great transport links
-  On-site laundry

For your safety

-  On-site support staff
-  Secure door entry
-  Free contents insurance

For your enjoyment

-  Games rooms
-  TV or cinema room
-  Fantastic social spaces

While every effort will be made to allocate your first choice, we cannot guarantee this. We operate on a first-come, first-served basis and all options are subject to availability, therefore you may be offered another accommodation type or location, or we may refer you to another provider.

Kaplan Living Special Support

Enjoy enhanced support at The Stay Club Kentish Town.

All residents at The Stay Club Kentish Town, a third-party residence, will receive comprehensive support throughout their stay. You can also opt to include additional assistance by adding Kaplan Living Special Support to your package; if you're under 18, this service is mandatory for your wellbeing.

Kaplan Living Special Support is a premium service, with an extra level of help for you making the transition to life in the UK. It will give you peace of mind, and help you live with confidence.

For a fee of £300, you'll have access to Wellbeing Coordinators, who will be permanently based at the residence. They can help you with things like:

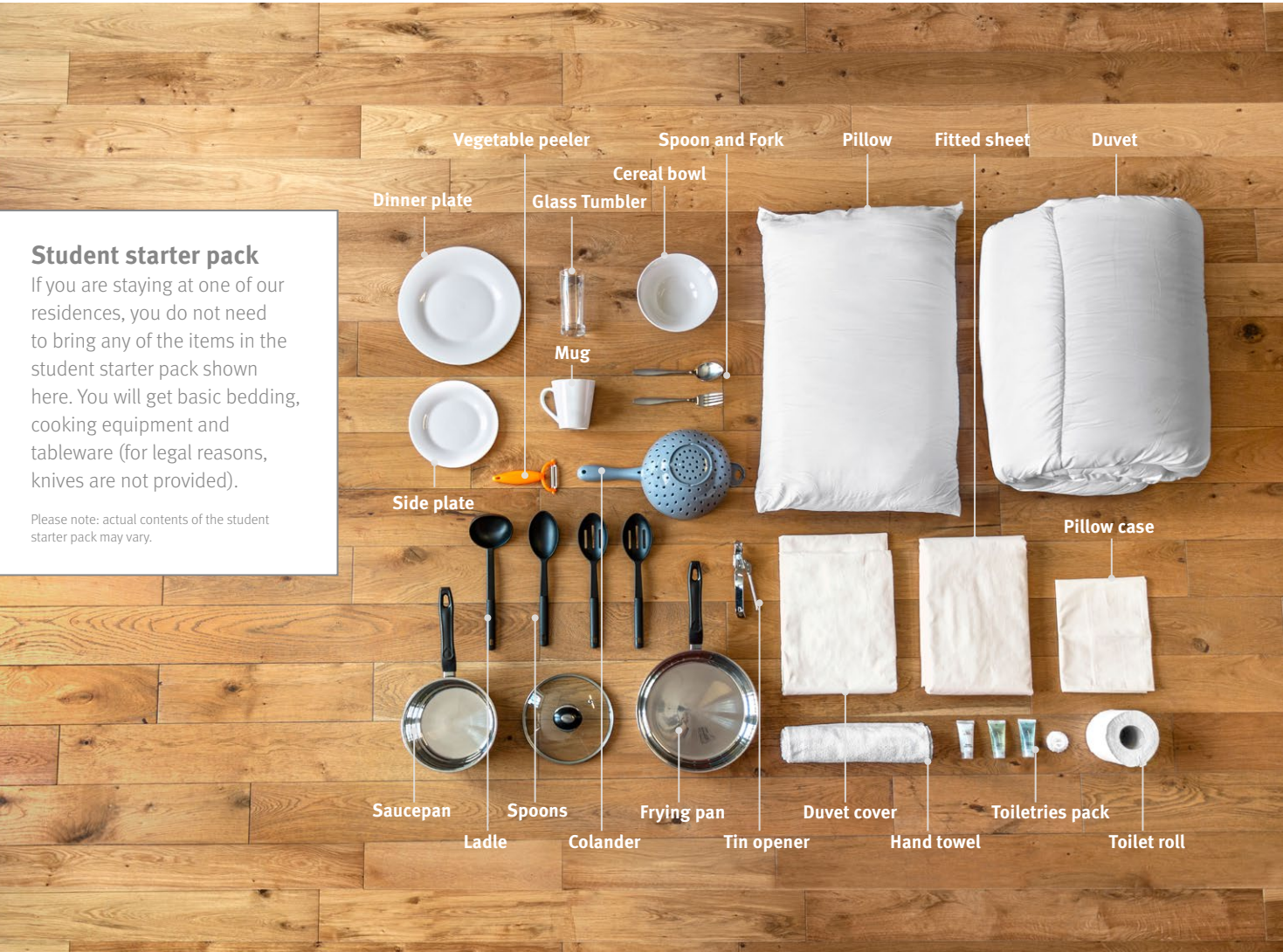
- Answering questions from you or your parents before you arrive in the UK
- Helping you get settled into your new home
- Making medical or dental appointments

- Handling emergencies such as medical visits
- Getting involved with the college and residence community
- Arranging calls with your parents so you can keep in touch
- Ensuring that you receive the care and support you need

Student starter pack

Free items for your arrival

To make your move as easy as possible, we provide all students with a free 'student starter pack' with many of the basic items you'll need as soon as you move in. It means that you won't have to rush around the shops on your first day, and can settle right into your new accommodation.



How to book

You can book your accommodation by following the steps below.

Step 1 Choose your room

Check the [dates and prices on the accommodation page](#) on our website, and choose the option that matches your course dates.

Step 2 Log in to accommodation portal

If you have applied and received an offer of study, you'll need to accept your offer first. If you indicated on the application form you would like Kaplan-arranged accommodation, you'll then receive login details for the [accommodation portal](#) via email. If you have not received anything, please [contact us](#) and we'll arrange to resend it to you.

Step 3 Confirm your room selection

Use your login details to log into the [accommodation portal](#). Here, you will be able to see available options and you can choose your preferred room type.

Step 4 Kaplan will allocate your room

Once we have allocated your room, we will send you an email asking you to log back in to the [accommodation portal](#) to confirm your booking. You will need to sign your accommodation agreement electronically, nominate a guarantor and make your first accommodation payment.

Step 5 Confirmation of booking

Once you have completed the required steps, we will confirm your booking.

Step 6 Your arrival confirmation

When you are ready to come to the UK and have booked a flight, you will need to confirm your arrival details by completing the online [Pre-Arrival Form](#). The College will be able to book and confirm transfers for you; details are provided in the [Pre-Arrival Guide](#). Please submit your arrival details at least 2 weeks before you fly to ensure the College and your accommodation are prepared for your arrival.

How to pay

Before you arrive, you can pay your accommodation fees using one of the methods below:

Method 1

Bank transfer / credit or debit card to Flywire.

1. Visit KICLondon.flywire.com
2. Choose your country and the amounts you are paying in Pounds Sterling
3. Choose your payment method and make your payment to Flywire
4. Enter the payer details and those of the student you are paying for
5. Track and confirm your payment by email, SMS or by logging into KICLondon.flywire.com

Method 2

Bank draft or electronic transfer in Pounds Sterling to:

Bank Account Name: Kaplan International College London

Bank Name: HSBC Bank plc

Sort Code: 40-11-60

Bank Account Number: 70004243

BIC: HBUKGB4B

IBAN NO: GB80HBUK40116070004243

Bank Address: 60 Queen Victoria Street, London, EC4N 4TR

Payments

For your first payment, you can pay any amount from a minimum of £1,000 to the full accommodation cost. This is required to secure your booking and should be made at the time of booking before your arrival in the UK. Depending on your accommodation option, the remaining amount is paid when you register for your first term, and before your second term (if applicable).

Accommodation guarantee deadline

You'll be guaranteed accommodation if you accept your offer to study and book your accommodation before the dates below.

Autumn 2022

Your accommodation contract start month	Guarantee date to book accommodation
September 2022	1 August 2022
October 2022	1 September 2022

Spring 2023

Your accommodation contract start month	Guarantee date to book accommodation
January 2023	1 December 2022
February 2023	1 January 2023
April 2023	1 March 2023

Don't worry – if you miss the guarantee deadline, you can still login to the accommodation portal to see what options are available to you. If no options are available at the time, you can join our waitlist, and we'll do everything we can to help you find a great place to live in London.



Useful information

You can find some helpful information below to guide you through your accommodation application.

Accommodation Agreement

The Accommodation Agreement is a contract confirming the details of your accommodation. By signing your Accommodation Agreement, you are agreeing, under UK law, to pay for your accommodation for the full length of the accommodation contract.

Accommodation confirmation

You must complete the required steps in order to secure your booking. If you fail to do so by the accommodation confirmation date, your agreement may be cancelled and your room given to another student to book. If your Accommodation Agreement is cancelled, and you tell us that you would still like to book Kaplan-arranged accommodation, you will be offered the next available room.

Accommodation length change

You may not change your contract length after you have booked and signed your Accommodation Agreement.

Accommodation portal login

You'll receive your login details via email once you have accepted your study offer.

First payment

The first payment is to secure your accommodation along with the signed Accommodation Agreement.

Guarantors

A guarantor is someone who will be legally responsible for any accommodation fees you are unable to or fail to pay.

Kaplan Living Special Support

On top of our comprehensive residence core support, we also offer the Kaplan Living Special Support package upgrade. With this service, Wellbeing Coordinators will be on hand to help you settle into life in the UK, assist with any problems you encounter, and ensure that you can live and study with us safely. This support is available to all students aged under 18 years on the start of their accommodation contract, for an additional fee of £300 — this is a mandatory service for your wellbeing.

Moving into your room

You will be able to move into your room from the start date of your contract, as long as you have sent us your signed Accommodation Agreement and first payment.

Refunds

When your Accommodation Agreement is cancelled and you decide not to take another offered room, refund of any fees paid will only be granted in line with Kaplan International Pathways' Terms and Conditions, and may be subject to an administration fee being deducted. If you leave the College for any reason after you arrive, accommodation fees will not be refunded.

Under 18s

The College will accommodate students under 18 years of age in a single-sex flat with other students under 18 years old. Students who are under the age of 18 on arrival in the UK may be asked to pay all their accommodation fees before they arrive, and are advised to stay in either Kaplan or university-arranged accommodation.

Visa

If your visa application is unsuccessful, please send a copy of your visa refusal documents (or other evidence) to your Admissions Adviser for review. A decision will then be made regarding eligibility for refund in line with the company's terms and conditions.



Find out more

Visit the links below or contact us for more information.
We look forward to welcoming you to London!

Useful links:

- 🔗 [Accommodation in London](#)
- 🔗 [Accommodation dates and prices](#)
- 🔗 [Prepare for your studies at the College](#)
- 🔗 [City University of London](#)
- 🔗 [Cranfield University](#)
- 🔗 [Queen Mary University of London](#)
- 🔗 [University of Birmingham](#)
- 🔗 [University of Bristol](#)
- 🔗 [University of Westminster](#)
- 🔗 [University of York](#)
- 🔗 [Student life in London](#)
- 🔗 [Visit London](#)

Social media:

Search: @KICLondon



#KaplanLife

Contact details:

@ pathways.accommodation@kaplan.com

For accommodation queries with the Central Accommodation Team:

📞 +44 (0)20 7045 5060

For arrival queries with the College:

📞 +44 (0)20 3031 9710