



# WE ARE ESSEX ONLINE

**Postgraduate  
Prospectus 2021-22**

---



University of Essex

---

Online



# CONTENTS

---

We are Essex Online

Our highlights

Realise your ambitions

Our student community

Student stories

The online study experience

Student support

Essex Online perks

Developing your employability

Graduation at Essex

## Our courses

Business courses

Project management courses

Computing courses

Law courses

Education courses

Health courses

Psychology courses

## Important stuff

Fees and funding

Scholarships and discounts

Steps to join Essex Online

Entry requirements

Important information

# WE ARE ESSEX ONLINE



**University of Essex Online courses are delivered by Kaplan Open Learning in partnership with the University of Essex. Since 2007, we've offered high-quality 100% online and part-time programmes at undergraduate and postgraduate level.**

We strive to make higher education accessible to anyone with the potential and drive to succeed. We design and deliver innovative, industry-led and career-enhancing programmes that enable our students to transform their lives.

From day one until you graduate, you will be supported by our dedicated student support advisers and study skills specialists who will guide you and help you to build up your academic skills. Additionally, our module tutors, who are leading authorities and specialists in their fields, will provide you with unparalleled academic support during your studies with us.

All our qualifications are awarded by the University of Essex, an award-winning institution with a 50+ year heritage. Essex is part of the elite group of 'dual intensive' universities for teaching and research excellence – it is rated 27th in the UK by the Complete University Guide (CUG 2022).



# OUR HIGHLIGHTS

---



## University of the Year

The University of Essex, Times Higher Education Awards (THE 2018)



## 22nd in the world

The University of Essex, for International Outlook in the Times Higher Education World University Rankings (THE 2021)



## Top 30 in the UK

The University of Essex, is ranked 27th in the Complete University Guide (CUG 2022)

# REALISE YOUR AMBITIONS

---

**Maybe you want to push your career further. Perhaps you're craving a personal challenge. Whatever your reasons, Essex Online is the place for you.**

Our transformative education isn't just about what you learn through our virtual learning environment. With an Essex Online education, you will be equipped to take on the challenges of the world, personal or professional, and make an impact. With Essex Online on your side you can make a difference; we will provide you with the knowledge, skills and support to develop your ways of working, your understanding of your subject and the world around you, to unlock the power of your own ideas and to make your mark on the world.

Whatever stage in life you're at, you'll be able to balance our courses with working full-time, raising a family, trekking across the globe or even as a pastime during your retirement. Whatever your reason for studying or your future plans, we can help you get to the end goal – being an Essex Online graduate.

# OUR STUDENT COMMUNITY

Our student network spans over 140 countries and we've already had over 3,000 students in graduation gowns. Will you be one of them?



## **Ambitious**

Our students won't be spoon-fed a degree; they will earn it through an intellectual, cultural and social journey that demands hard work and commitment.

## **Independent thinkers**

Exploring beyond conventional wisdom, our students collaborate and generously share their ideas to inspire others.

## **Multi-tasking**

Many of our students have active family lives or demanding work commitments, but they still put 100% into their study.

## **Inquisitive**

Curiosity is in our students' DNA. They're willing to break intellectual boundaries and together extend the frontiers of knowledge.

## **Idea generators**

Brave enough to have ideas and generous enough to share them; that's our students in a nutshell.

# STUDENT STORIES

Meet some of our inspirational global students – working towards achieving their aspirations through their studies.



## Tansy's story

**London, United Kingdom**

**Master of Business Administration (MBA) student**

**Senior marketing executive with entrepreneurial ambitions**

Choosing to study my MBA with University of Essex Online was the best decision I have made. Currently I work full time as a Senior Marketing Executive, however in the near future I hope to start my own company. This was my main motivation for studying an MBA as the programme covers modules required to set up your own organisation.

Studying my MBA online and part-time while still working has benefited my career, studies and lifestyle.

I've valued the Director's Workshops, which are delivered by industry experts who have lots of knowledge and experience in specific industries. These have covered a wide range of topics and given me a greater insight into different business areas I have not worked in yet. I know that one of the most important factors for a start-up is having a stable network. Through attending Director's Workshops, seminars and Q&A sessions I have been able to grow my network and receive insights from individuals all over the world, and in different industries which I would have struggled to achieve without studying with Essex Online.

I've also appreciated being able to access a huge range of online resources, at any point throughout my course, including eBooks, lecturecasts, seminar recordings and research papers. Taking advantage of these online resources not only helps me to complete modules to a high standard but also provide lots of information needed to start an organisation. For example, there are a range of entrepreneurial resources and specific business area resources, such as online marketing books or accounting papers to help with building my business idea!



**"The MBA programme's highly flexible mode of study has enabled me to learn wherever and whenever it is convenient for my lifestyle. I can still do everything I normally would, whilst working towards achieving my future goal."**

**Helen's story**

**Brighton, United Kingdom**  
**Master of Public Health (MPH) student**  
**Pharmacy technician studying the MPH to open up opportunities**

I'm a pharmacy technician by background. A long, long time ago, I was doing art and design at undergraduate level. But decided it wasn't for me and kind of fell into pharmacy which I did for about 14 years. I got to the point where I had kind of progressed as far as I could with that – not with the career but qualification and education-wise – and so, I started looking around for something else to do.

Of course when I started, in January 2020, we didn't really know the pandemic was going to hit us. I guess brick-and-mortar universities have really, really struggled because none of us ever expected something like this to happen. Whereas with Essex Online, the whole programme delivery was planned to be online anyway. There was no disruption as far as I was concerned. Everything went as it should do. And that was super helpful for me, in terms of trying to work out my now messy life and messy job – much like everyone else. So that's been a small bonus of studying online!

I was quite lucky in terms of this Masters, being able to get quite a lot of work done in a short space of time. I finished a short-term job contract a week into the first lockdown and I was unemployed for a few months. Then I got a job, and then I was unemployed for another few months, and then I got a full-time job. So it has been really up and down professionally for me during the pandemic, as a healthcare worker as well at the coalface of it. So life has been a little bit hectic but I'm sure it has been for everyone.

Currently I'm working in training and development for a company who create training packages for medicine administration for carers and nurses in care homes. It has been a different avenue of work for me, and I think a lot of what I'm doing now on my degree is helping me as well. I did this degree to open up options, gain extra knowledge and to learn something. Part of the reason I'm so enthused about it is because I really enjoy learning new things. But in terms of what I'll do with it in the future, who knows? I could continue down the pharmacy route. I could go down a public health route. Or ideally, I could find a way to combine the two, but we shall see – watch this space.

My advice for anyone unsure about studying public health online: go for it. If it's something that interests you – that's the main thing. If you feel like you should do it, maybe come back when you can be more focused on it. Because the one thing I would say is there's a lot of work, and you have to really enjoy doing it to make it work. But beyond that, I really mean just go for it. Everybody at Essex Online are so supportive: the tutors and Student Support team, if you need anything from them, they are incredible. They'll always back you up if you're unwell or anything. So, you've always got the support there; you're never on your own.



**“My main reason for choosing to study online was time saving. I thought I would struggle to work and do a part-time degree if I was also trekking backwards and forwards, commuting to work, on-campus lectures and anything in-between.”**



1 - Helen's wonderful friends have been an invaluable support network throughout her studies.



## Adolfo's story

### Xiamen, China

#### PG Dip Education student

#### Educator planning to undertake a Masters for career progression

Like many people from my country, Chile, I was unhappy with my job and lifestyle, so I decided to move to another place. Some friends told me that teaching English in Asia was a very well-paid position – and I would have the opportunity to explore exotic and beautiful locations. At that moment, almost ten years ago, the only requirement to teach was to be a foreigner and speak English. So without thinking that much, I packed my bag and bought a plane ticket to the People's Republic of China, with the plan to look for a job I had zero experience in, not knowing the Mandarin language or even how to stay in the country after my tourist visa expired!

Long story short, I managed to get hired by a great school, where I had a couple of years working and earning a salary three times better than I would back in my home country. I fell in love with the culture, and I finally found out that my real vocation was teaching. Everything was great, but then China introduced new requirements for working visa applications, in response to the increased arrival of unqualified teachers looking for a job.

So, I started to do some simple training such as TEFL (Teaching English as a Foreign Language) and CMS Guide for preschool (Chinese Montessori Society). But after a while, I realised that if I wanted to advance in my career, the only way I could achieve this would be to invest more time in my education. However, I needed a course that wouldn't affect my work and family life.

I applied for the Postgraduate Certificate through the work experience entry route, which requires at least two years of demonstrable practice at an education institution. After a couple of weeks and number of emails exchanged, my application was accepted, and I was enrolled on the programme. I felt remarkably happy, especially after discovering that many of my classmates were in the same situation as me: living and teaching abroad in Asia and Europe.

My experience with Essex Online has been excellent. The Student Advisers and tutors are very supportive, and though the modules are challenging they are still doable. I'm now studying the Postgraduate Diploma and planning to progress my studies to achieve the Master of Education, which is one of the requirements to apply to be a Director or Vice-Principal at an international school.

Working abroad and studying online is not only an attractive option for teachers. I have other friends in different fields who have found studying online beneficial for their careers as engineers, software developers, sports coaches, lawyers, and more. All of them decided to improve their skills to pursue better jobs, higher salaries, and more enjoyable lifestyles, even when they have full-time jobs and families.

The possibility to change your life is more tangible than you think. If you are working abroad in another country, studying an online qualification is a great way to increase your career options and open up paths to achieve your goals.



**“I decided online studies would be the perfect option, so I began to research online universities that are prestigious and affordable. University of Essex Online was one of the universities I had shortlisted, and I chose it because they offered a convenient set of pathways in education (Postgraduate Certificate, Postgraduate Diploma and Masters)”**

## **Natalie's story**

### **Nottingham, United Kingdom MSc Criminology and Criminal Psychology student From teenage mum to Masters student**

There's a stereotype attached to teenage pregnancy: girl gets pregnant at school and claims benefits forever – the end. That's how society wants us to believe that is how teenage mums are. And that's not my story and it's probably not the story for most others; however, society feeds us this idea that if you become a teenage mum, then it's the end of your life, and you will never amount to anything.

Going through school, my reports all said the same thing: 'Natalie is a very capable student. She could be achieving the highest grades. However, she won't stop disrupting people; she won't stop talking; she doesn't do the work'. So you know, that was me and I didn't care. And when I got pregnant in the summer in-between Year 10 and 11, I doubt that there was anyone who was surprised. I could have got cracking GCSEs, but I didn't and instead messed about. I really didn't make the most of my potential even though I was very bright.

In September 2008, I started an access course, and I still didn't know what I wanted to do in the future. While studying the course, I toyed with studying midwifery, or a probation officer which was something I thought I really wanted to do at the time; and that was mostly because I had a youth offending worker when I was getting into troubles as a teenager – so that was the inspiration behind that. But it turned out, you have to be employed as a probation officer in order to enrol on the course. Well, I was eighteen years old, and I didn't have any work experience or the skills that would have got me employed and therefore on the course.

I applied to study social work at a university near where I lived at the time, and I was offered a place. During my final year at university, I had a placement with a fostering agency which I loved. I even applied for a job after university with this agency, but I didn't get it which really defeated me.

When I was back in hospital having my fourth child, I had the idea of going back to university again but I wasn't sure how I'd do it. I then got an email in my inbox from Essex Online and discovered it offers 100% online Masters degrees. So I thought sod it – I'm going to apply!

I decided to apply for criminology and criminal psychology because becoming a probation officer was still at the back of my mind. And I thought, I could use my social work degree to get onto the Masters programme to enable me to move into a different career and it could help me improve my employability.

Though I did this degree to use it to get another job, since being on the course I have started a new role within victim services. It's something that I was probably already qualified to do, but I would have never had the confidence to go ahead and apply for that – and I absolutely love it.

I feel a bit preachy saying this, but with all the mess-ups I had, if I can overcome all of those things – having babies interrupting my learning – anyone can do anything. The point is, you know I'm thirty-one years old and I still don't know what I want to be when I grow up. You don't have to be imprisoned by one line of work. If you decide at school that you want to be a teacher – that's fine, be a teacher but it doesn't mean you then can't go on to do something else. There's no reason why you can't access more training in your thirties, forties or fifties. Whatever it is you want to do, there are really no limits, and you should go for it.



**“There's no reason why you can't access more training in your thirties, forties or fifties. Whatever it is you want to do, there are really no limits, and you should go for it.”**

# THE ONLINE STUDY EXPERIENCE



## **Interactive virtual learning platform**

Designed specifically for online learning, our courses are delivered exclusively through our virtual learning environment (VLE). This means wherever you are, whatever the time, you can login and get some studying done.

Rather than lengthy pre-recorded lectures and trips to examination centres, our cutting-edge course content is designed with the modern student in mind.

## **Lecturecasts**

Course content is delivered via lecturecasts, offering you a contemporary and accessible way to interact with multimedia content and check your understanding via engaging and interactive activities.

## **Discussion forums**

Throughout your study, you'll get to know your course matter, share your experiences and learn from fellow students through regular participation in discussion forums.

## **Live sessions**

Our tutors host regular live sessions throughout your modules giving you an opportunity to ask questions and discuss course materials in greater depth.

## **Online resources**

You will get access to all core textbooks completely free of charge. In addition to the Essex eLibrary which hosts a range of academic texts and journals allowing you to read around your subject and improve your understanding.

## **Assessment**

You'll be assessed in a variety of different ways throughout your studies, enabling you to demonstrate your diverse skillset and subject understanding. Many of our courses are assessed exclusively through written assignments and even if exams are involved these can be completed from the comfort of your home.

---

**“I was particularly impressed with the way the online programme was structured. All the faculty who taught the modules were very helpful. They taught me so much.”**

**William Annoh, Ghana,  
MSc Business and Management**

# STUDENT SUPPORT

**Although you'll be studying independently, you won't be alone. There are a range of student services available including academic, pastoral and technical support. You will also have plenty of opportunities to collaborate, discuss and debate with your fellow classmates and tutors.**

## **Admissions Advisers**

As soon as you enquire about or apply for one of our courses, you'll be assigned an Admissions Adviser. They will steer you through the entire application process, answering any questions and assisting you with the practicalities.

## **Student Advisers**

Once you've been accepted onto a course you will be introduced to our Student Support team and a Student Adviser will welcome you on your first day. Our Student Advisers will be with you for your entire study journey and will be on hand to mentor and guide you throughout your course.

## **Academic support**

Our friendly and knowledgeable tutors will be on hand for any academic queries and guidance. As well as regular virtual office hours and frequent live sessions, they'll be marking your work and providing thorough feedback along the way.

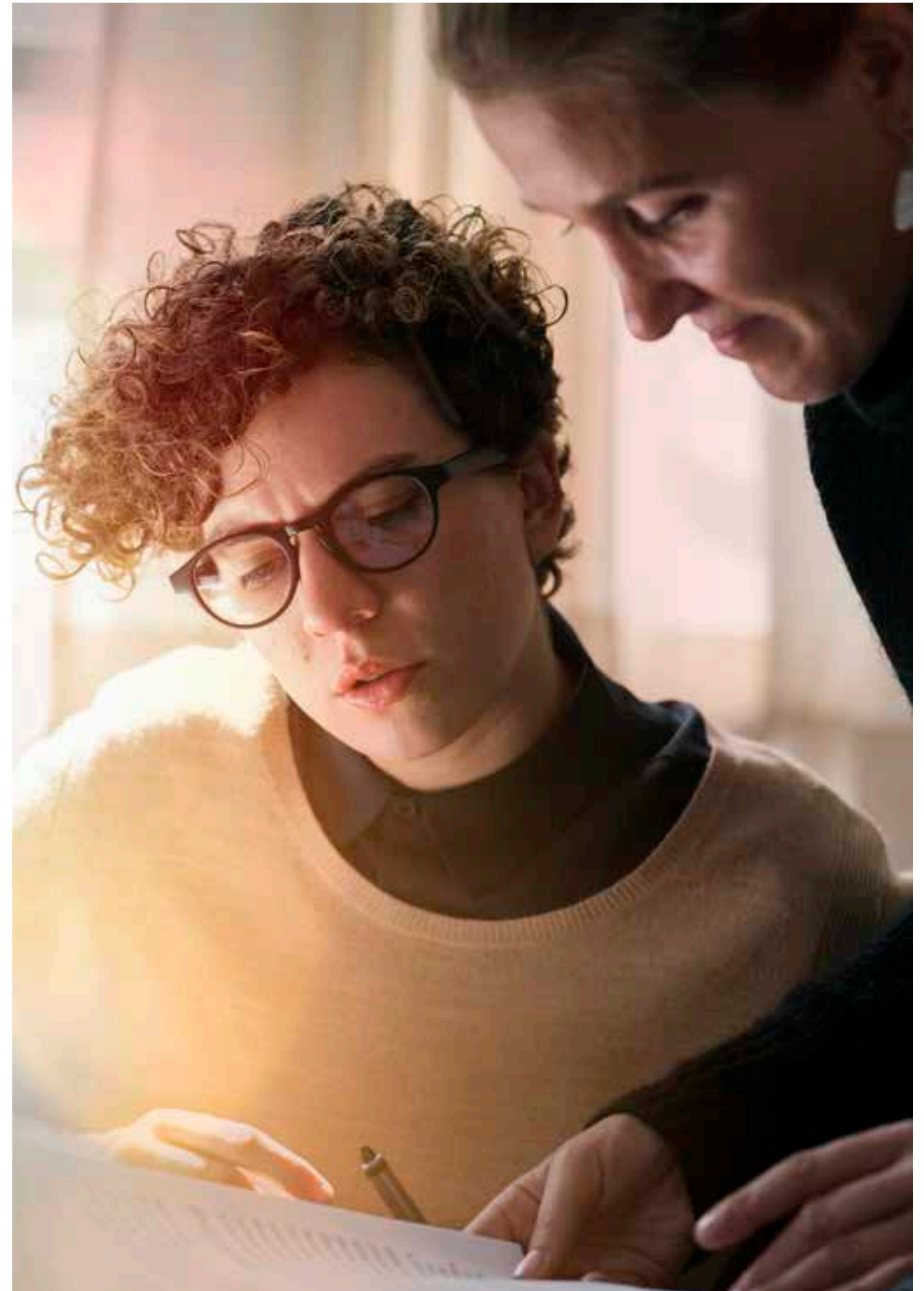
## **Disability support**

If there's anything our staff can do to make our courses more accessible for you, just ask! We recommend that you let us know about any physical or learning disabilities during the application process. This is so we can assess your needs and make any necessary arrangements to meet your study requirements.

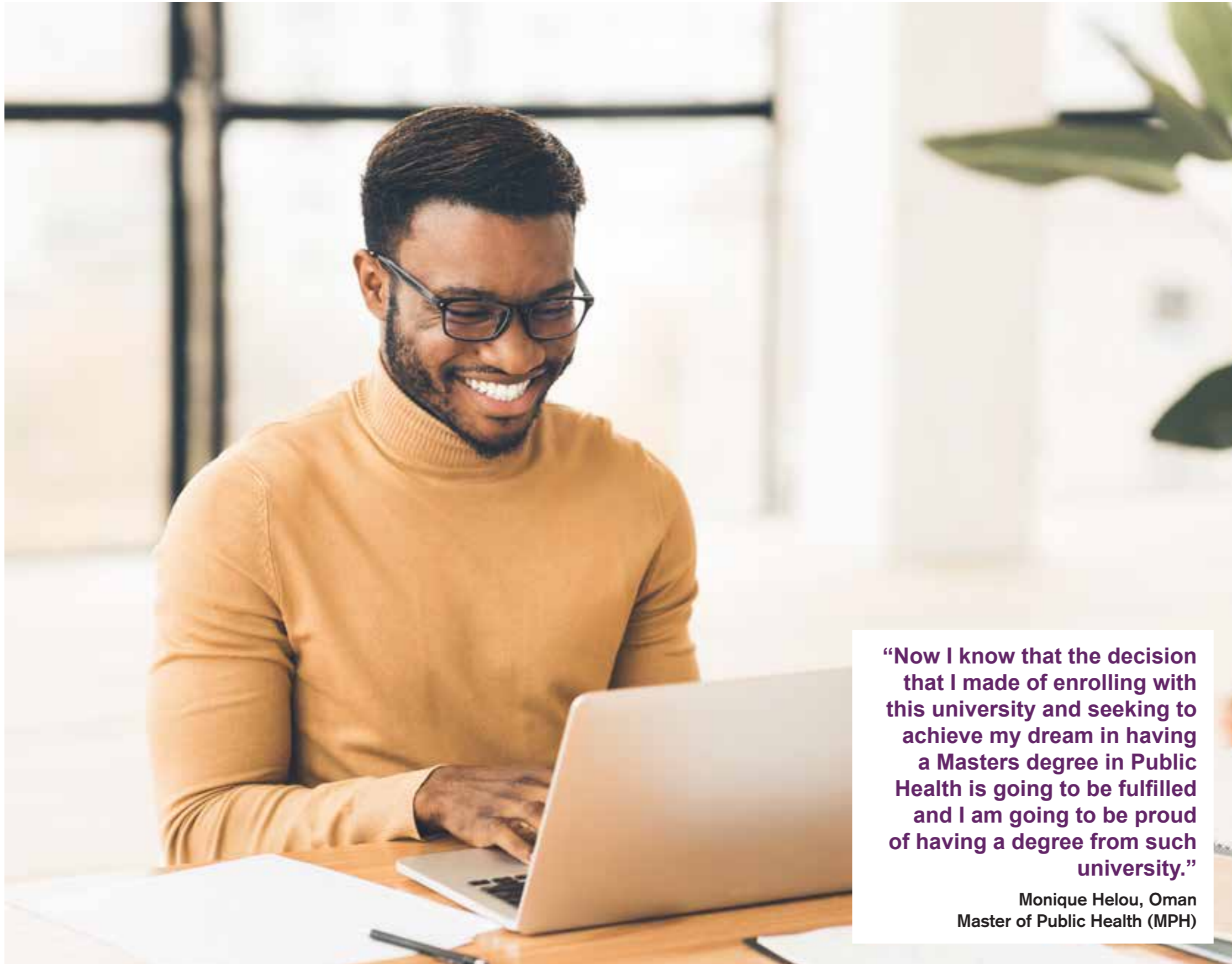
---

**“The teachers were absolutely amazing – very skilled and experienced. My Student Adviser was very good, very professional, always replied on time. During the whole programme I never felt like I was left alone or that I didn't have enough support.”**

**Tomasz Boryniec, China, MBA**



# ESSEX ONLINE PERKS



**“Now I know that the decision that I made of enrolling with this university and seeking to achieve my dream in having a Masters degree in Public Health is going to be fulfilled and I am going to be proud of having a degree from such university.”**

**Monique Helou, Oman  
Master of Public Health (MPH)**

## **Flexible study approach**

Whether you have a full-time job, a busy family life, or an action-packed travel schedule, our online and part-time courses utilise the latest technology to help you fit studying around your busy lifestyle.

## **Affordable education**

Student loans are available to eligible students based in England. For those self-funding their studies, we offer flexible monthly payment plans, plus a range of discounts and scholarships.

## **Quick feedback turnaround**

Throughout the course we'll provide feedback on submitted assignments within 7 days, so you'll always have an up-to-date perspective on how you're doing.

## **Small class sizes**

To make sure you get the best possible level of support from our academic staff, we keep class sizes small.

## **Free trial period**

If for some reason you don't love online study or your course after 21 days, you can receive a full refund (**Terms and Conditions apply**).

# DEVELOPING YOUR EMPLOYABILITY

## **Enhance your career prospects while working full-time**

Our degrees are designed with working professionals in mind: not only are they flexible enough to fit around your existing commitments, but right from the start you can apply your new expertise to your day job.

## **Gain subject-specific knowledge**

Whatever your field, our specialist courses will allow you to gain an insight into the subject at hand. Our tutors have extensive work experience and research practice in the field they teach, meaning your knowledge is not only up to date but honed by years of on-the-job experience and academic expertise.

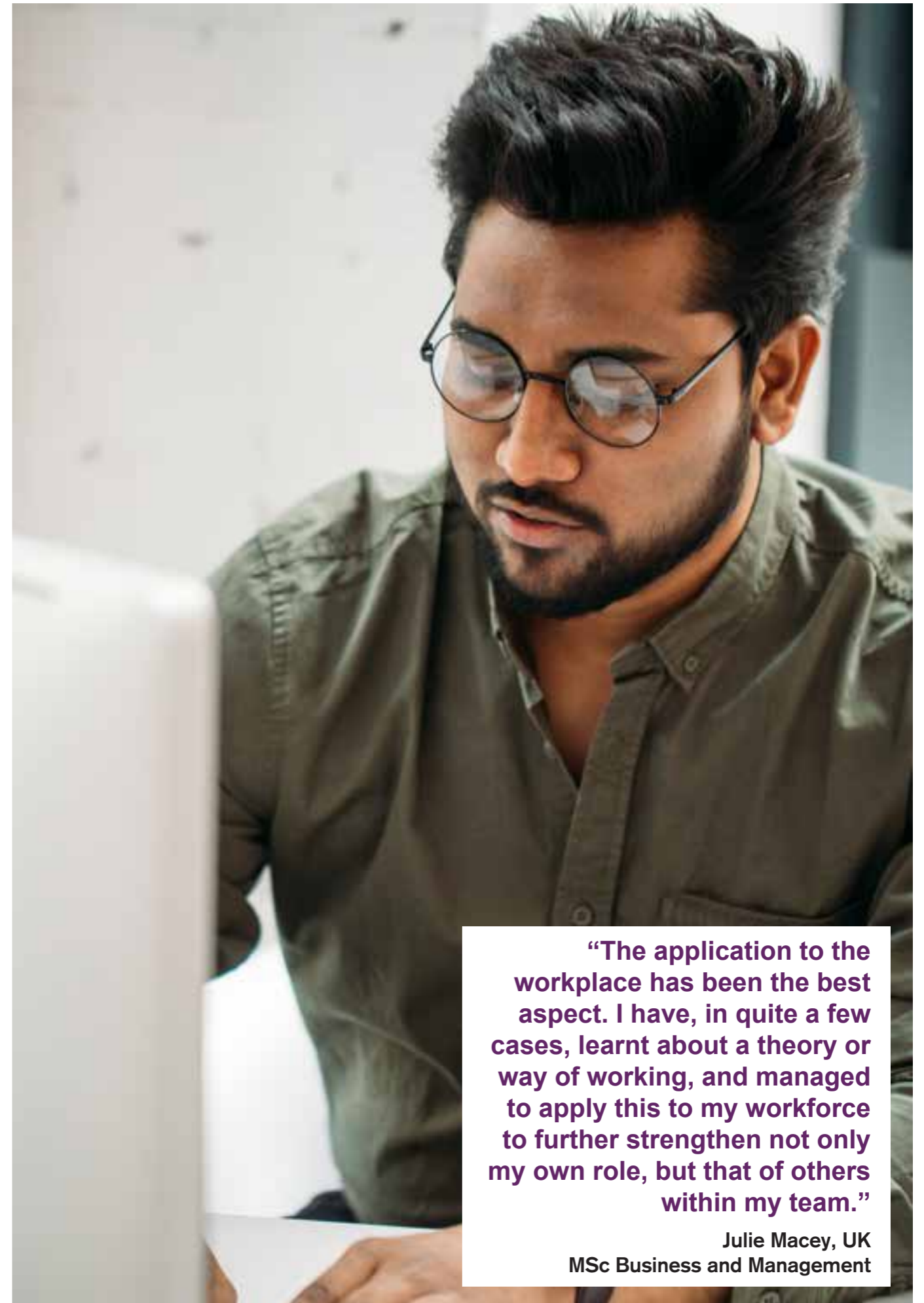
Many of our courses feature optional modules that allow you to tailor your learning to your specific interests and career objectives.

## **Develop transferable skills**

Even if your career aspirations are not directly related to one of our subjects, you can still benefit from the transferable skills developed on your course. To achieve a higher education qualification, students must be disciplined, manage their time well and communicate articulately and coherently.

By collaborating with your classmates, you will develop your teamwork skills and you'll also have the opportunity to improve your critical evaluation through forums and a variety of assessments, discussing the course material.

Finally, all of our Masters degrees culminate in an independent project, report or dissertation. This is the perfect opportunity to enhance your research, analysis and presentation skills.



**“The application to the workplace has been the best aspect. I have, in quite a few cases, learnt about a theory or way of working, and managed to apply this to my workforce to further strengthen not only my own role, but that of others within my team.”**

**Julie Macey, UK  
MSc Business and Management**

# GRADUATION AT ESSEX



**“It’s been a really good two years, and then to come along to the ceremony – it’s a really good day, very inclusive. Sometimes it feels a bit remote when you’re studying online, but when you come here you felt like you really were part of the University.”**

**Richard Harpin, UK, Master of Public Health (MPH)**

**Upon successful completion of your degree, you will be invited to attend a graduation ceremony at the University of Essex Colchester Campus.**

## **Celebrate your achievement**

Completing your degree is a very special milestone in your life. Graduation is an opportunity to celebrate your hard work and dedication while also recognising and acknowledging the support received from family, friends and classmates.

## **Meet your tutors and Student Advisers**

For our graduates, this is likely to be the first time they meet in person the staff members who have been integral to their study.

## **Explore Essex’s campus**

The beautiful University of Essex Colchester Campus is home to 16 academic departments and schools and more than 13,000 students. Graduation takes place in July.

## **Receive your certificate**

You will receive the same certificate as students who studied on campus – the mode of study is only mentioned on your academic transcript with your final grades.

# OUR COURSES

**Whatever your passion, explore it at Essex Online. Our programmes span a broad range of subjects. Which will you choose?**

Perhaps psychology is your calling? Or do you have aspirations for a career in computing? Or maybe you want to make a difference in the world of healthcare? Choose our full Masters degrees to fully immerse yourself in the subject, or a shorter PG Cert or PG Dip programmes to give yourself a solid grounding in the field.

University of Essex Online programmes are delivered by Kaplan Open Learning, an experienced online learning provider. Each of our programmes has been designed with online delivery in mind from the very beginning and are taught by industry leaders and subject matter experts.





**Business is an ever-changing field and one of the most versatile subjects to study. Graduates have a wide variety of career options and the ability to work in any industry.**

Our courses are designed by experts to provide you with comprehensive professional and technical knowledge of business disciplines; and our teaching style enables you to develop important practical managerial skills such as communication, decision-making and problem-solving.

You can choose to specialise in a particular aspect of business – management, human resources, digital marketing, finance, analytics or supply chain management – or take on the challenge of our word-class MBA.

# BUSINESS COURSES

Course indicative duration	
Essex Online MBA	2 years
MSc Business and Management (Business Analytics)	2 years
PG Dip Business and Management (Business Analytics)	16 months
PG Cert Business and Management (Business Analytics)	8 months
MSc Global Digital Marketing	2 years
PG Dip Global Digital Marketing	16 months
PG Cert Global Digital Marketing	8 months
MSc Supply Chain management and Global Logistics	2 years
PG Dip Supply Chain management and Global Logistics	16 months
PG Cert Supply Chain management and Global Logistics	8 months
MSc Business with Finance	2 years
PG Dip Business with Finance	16 months

### Why we're great

- As one of the longest-running providers of online business degrees, we put over a decade of experience to good use in designing our courses.
- Our certificates are awarded by Essex Business School, part of the University of Essex, a world-renowned business school ranked in the UK's top 25 for research quality (The Times and The Sunday Times Good University Guide 2019).
- Our business courses are designed with online delivery in mind – not only can you complete them around existing work commitments, you can also use course material in your job from day one.

**“It was very technical, and what upcoming managers should look into. I definitely recommend it.”**

**Varun Sharma, UAE, MBA**

# ESSEX ONLINE MBA



As one of the only 100% online MBAs accredited by the Association of MBAs (AMBA), our experiential MBA provides you with the knowledge and skills to develop new ventures and champion innovation. Whether you want to run your own business or advance to a leadership position, you'll emerge more confident, capable and prepared to make waves in your chosen field.

## Syllabus

The MBA is made up of the following modules and, upon completion, is equal to a total of 180 credits at Level 7.

### Level 7 modules

- MBA Synchronous Attendance (0 credits, 120 hours)\*†
- Director's Workshop (10 credits)\*
- Leading with Impact (10 credits)
- Strategy (10 credits)
- Sustainability and Operations (10 credits)
- Accounting and Finance (10 credits)
- Markets, Governance and Ethics (10 credits)
- Data and Analytics (10 credits)
- Strategic Marketing (10 credits)
- Innovation and Entrepreneurship for New Business Models (10 credits)
- The Management of Innovation and Organisational Change (10 credits)
- People and Organisations (10 credits)
- Business Planning (20 credits)\*
- MBA Project (40 credits)\*
- One optional module:
  - Strategic Online Marketing Management (10 credits)
  - International Business Environment (10 credits)

\*Core module (must be passed in order to achieve the award)

† In order to successfully complete the MBA, students are required to undertake 120 hours of live attendance. The live attendance sessions do not require physical attendance as they run 100% online.

## Course overview

**Tuition fee 2021-22:** £13,500 ([learn more](#))

**Indicative duration:** 2 years

**Qualification:** MBA

**Funding options:** [See here](#) for more information

## Start dates

**2021:** September

**2022:** January, April, July

## Entry requirements

For the academic entry route, you must have as a minimum a 2.2 undergraduate degree from an approved institution, equivalent to a UK Honours degree. You must also have at least three years of relevant professional work experience post-graduation.

For the work experience entry route, you must have at least five years' relevant managerial experience. You will also need to write a 2000-word essay.

All MBA applicants must submit an up-to-date CV. You don't need to have completed GMAT to apply but we welcome applicants with a score of 600 and above.

If English is not your first language, your English ability should be equivalent to an IELTS score of 6.5. If you do not hold an IELTS or equivalent qualification, we will ask you to pass our free online English test.

## READY TO APPLY?

**[Complete the online application form](#)** and an Admissions Adviser will be in touch to assist you in the enrolment process.

# MSc BUSINESS AND MANAGEMENT (BUSINESS ANALYTICS)



The analysis of complex business data is essential for organisations to remain competitive. Business analytics helps to predict market trends and improve business processes. This course will develop your analytical skills and empower you, as a manager, to make strategic decisions to improve performance in all areas of business, from marketing and sales to product development and beyond.

## Syllabus

The MSc Business and Management (Business Analytics) is made up of the following modules and, upon completion, is equal to a total of 180 credits at Level 7.

### Level 7 modules

- Financial Decision Making (20 credits)
- Data Management, Modelling and Design (20 credits)\*
- Statistics for Business (20 credits)
- Project Management (10 credits)
- Data Visualisation and Interpretation (20 credits)
- Data Analytics for Managers (20 credits)
- Business Strategy (10 credits)
- Research Methods (20 credits)\*
- Business and Management Research Report (40 credits)\*

\*\*Core module (must be passed in order to achieve the award)

## Course overview

**Tuition fee 2021-22:** £11,570 ([learn more](#))

**Indicative duration:** 2 years

**Qualification:** MSc

**Funding options:** [See here](#) for more information

## Start dates

**2021:** September, October

**2022:** January, February, April, May, July

## Entry requirements

For the academic entry route, you must have an undergraduate degree from an approved institution, equivalent to a UK Honours degree, or a relevant professional qualification.

For the work experience entry route, you must have at least five years' management level work experience.

If English is not your first language, your English ability should be equivalent to an IELTS score of 6.5. If you do not hold an IELTS or equivalent qualification, we will ask you to pass our free online English test.

## READY TO APPLY?

**[Complete the online application form](#)** and an Admissions Adviser will be in touch to assist you in the enrolment process.

# PG DIP BUSINESS AND MANAGEMENT (BUSINESS ANALYTICS)



This short postgraduate diploma course is designed for professionals who want to understand the uses of data within businesses. You will gain confidence working with different types of data as well as an understanding of general management techniques.

## Syllabus

The PG Dip Business and Management (Business Analytics) is made up of the following modules and, upon completion, is equal to a total of 120 credits at Level 7.

### Level 7 modules

- Financial Decision Making (20 credits)
- Data Management, Modelling and Design (20 credits)\*
- Statistics for Business (20 credits)
- Project Management (10 credits)
- Data Visualisation and Interpretation (20 credits)
- Data Analytics for Managers (20 credits)
- Business Strategy (10 credits)

\*This module are core and must be passed in order to achieve the award.

## Course overview

**Tuition fee 2021-22:** £7,714 ([learn more](#))

**Indicative duration:** 16 months

**Qualification:** PG Dip

**Funding options:** [See here](#) for more information

## Start dates

**2021:** September, October

**2022:** January, February, April, May, July

## Entry requirements

For the academic entry route, you must have an undergraduate degree from an approved institution, equivalent to a UK Honours degree, or a relevant professional qualification.

For the work experience entry route, you must have at least five years' management level work experience.

If English is not your first language, your English ability should be equivalent to an IELTS score of 6.5. If you do not hold an IELTS or equivalent qualification, we will ask you to pass our free online English test.

## **READY TO APPLY?**

**Complete the online application form** and an Admissions Adviser will be in touch to assist you in the enrolment process.

# PG CERT BUSINESS AND MANAGEMENT (BUSINESS ANALYTICS)



Data plays a pivotal role in business operations, enabling managers to make informed decisions to ensure the business remains competitive. This short postgraduate certificate course gives you an insight into some of the key methods managers can use to analyse data and make logical decisions. The skills you develop can be applied across a range of departments including customer services and finance.

## Syllabus

The PG Cert Business and Management (Business Analytics) is made up of the following modules and, upon completion, is equal to a total of 60 credits at Level 7.

### Level 7 modules

- Financial Decision Making (20 credits)
- Data Management, Modelling and Design (20 credits)\*
- Statistics for Business (20 credits)

\*This module are core and must be passed in order to achieve the award.

## Course overview

**Tuition fee 2021-22:** £3,857 ([learn more](#))

**Indicative duration:** 8 months

**Qualification:** PG Cert

**Funding options:** [See here](#) for more information

## Start dates

**2021:** September, October

**2022:** January, February, April, May, July

## Entry requirements

For the academic entry route, you must have an undergraduate degree from an approved institution, equivalent to a UK Honours degree, or a relevant professional qualification.

For the work experience entry route, you must have at least five years' management level work experience.

If English is not your first language, your English ability should be equivalent to an IELTS score of 6.5. If you do not hold an IELTS or equivalent qualification, we will ask you to pass our free online English test.

## **READY TO APPLY?**

**Complete the online application form** and an Admissions Adviser will be in touch to assist you in the enrolment process.

# MSc GLOBAL DIGITAL MARKETING



There are a growing number of digital platforms available for marketing, and on this course you will learn how to optimise your usage of them to reach your target audience on an international scale. You will also gain an understanding of how to collect, analyse and deploy customer data in order to meet your strategic marketing objectives.

## Syllabus

The MSc Global Digital Marketing is made up of the following modules and, upon completion, is equal to a total of 180 credits at Level 7.

### Level 7 modules

- International Business Environment (10 credits)
- Marketing in a Global Economy (10 credits)
- Services Marketing (10 credits)
- Consumer Behaviour in the Digital Age (20 credits)
- Strategic Online Marketing Management (10 credits)
- Corporate Communication (20 credits)
- Marketing Strategy and Management (20 credits)
- Data Analytics for Managers (20 credits)
- Research Methods (20 credits)\*
- Business and Management Research Report (40 credits)\*

\*Core module (must be passed in order to achieve the award)

## Course overview

**Tuition fee 2021-22:** £11,570 ([learn more](#))

**Indicative duration:** 2 years

**Qualification:** MSc

**Funding options:** [See here](#) for more information

## Start dates

**2021:** October

**2022:** April, July

## Entry requirements

For the academic entry route, you must have an undergraduate degree from an approved institution, equivalent to a UK Honours degree, or a relevant Level 6 professional qualification.

For the work experience entry route, you must have at least five years' relevant work experience in marketing.

If English is not your first language, your English ability should be equivalent to an IELTS score of 6.5. If you do not hold an IELTS or equivalent qualification, we will ask you to pass our free online English test.

## **READY TO APPLY?**

**Complete the online application form** and an Admissions Adviser will be in touch to assist you in the enrolment process.

# PG DIP GLOBAL DIGITAL MARKETING



On this course you will delve into various aspects of international marketing, gaining an understanding of the different digital channels available and how companies are increasingly reliant on these to remain successful. You will also develop your communication and analytical skills, both essential for success in this field.

## Syllabus

The PG Dip Global Digital Marketing is made up of the following modules and, upon completion, is equal to a total of 120 credits at Level 7.

### Level 7 modules

- International Business Environment (10 credits)
- Marketing in a Global Economy (10 credits)
- Services Marketing (10 credits)
- Consumer Behaviour in the Digital Age (20 credits)
- Strategic Online Marketing Management (10 credits)
- Corporate Communication (20 credits)
- Marketing Strategy and Management (20 credits)
- Data Analytics for Managers (20 credits)

## Course overview

**Tuition fee 2021-22:** £7,714 ([learn more](#))

**Indicative duration:** 16 months

**Qualification:** PG Dip

**Funding options:** [See here](#) for more information

## Start dates

**2021:** October

**2022:** April, July

## Entry requirements

For the academic entry route, you must have an undergraduate degree from an approved institution, equivalent to a UK Honours degree, or a relevant Level 6 professional qualification.

For the work experience entry route, you must have at least five years' relevant work experience in marketing.

If English is not your first language, your English ability should be equivalent to an IELTS score of 6.5. If you do not hold an IELTS or equivalent qualification, we will ask you to pass our free online English test.

## **READY TO APPLY?**

**Complete the online application form** and an Admissions Adviser will be in touch to assist you in the enrolment process.

# PG CERT GLOBAL DIGITAL MARKETING



This short course will provide you with a solid grounding in the different approaches to digital marketing. You will learn about the global context in which businesses operate and how to tailor marketing strategies to your consumers' behaviour.

## Syllabus

The PG Cert Global Digital Marketing is made up of the following modules and, upon completion, is equal to a total of 60 credits at Level 7.

### Level 7 modules

- International Business Environment (10 credits)
- Marketing in a Global Economy (10 credits)
- Services Marketing (10 credits)
- Consumer Behaviour in the Digital Age (20 credits)
- Strategic Online Marketing Management (10 credits)

## Course overview

**Tuition fee 2021-22:** £3,857 ([learn more](#))

**Indicative duration:** 8 months

**Qualification:** PG Cert

**Funding options:** [See here](#) for more information

## Start dates

**2021:** October

**2022:** April, July

## Entry requirements

For the academic entry route, you must have an undergraduate degree from an approved institution, equivalent to a UK Honours degree, or a relevant Level 6 professional qualification.

For the work experience entry route, you must have at least five years' relevant work experience in marketing.

If English is not your first language, your English ability should be equivalent to an IELTS score of 6.5. If you do not hold an IELTS or equivalent qualification, we will ask you to pass our free online English test.

## **READY TO APPLY?**

**Complete the online application form** and an Admissions Adviser will be in touch to assist you in the enrolment process.

# MSc SUPPLY CHAIN MANAGEMENT AND GLOBAL LOGISTICS



Explore each stage of the supply chain process in detail through this online Masters degree, and gain the skills needed to succeed in this high-demand field, with up to six job vacancies for every applicant. Your studies will be contextualised by following a simple t-shirt product throughout the journey from procurement of raw materials, to wearer. You will also delve into contemporary topics such as sustainability and the use of big data.

## Syllabus

The MSc Supply Chain Management and Global Logistics is made up of the following modules and, upon completion, is equal to a total of 180 credits at Level 7.

### Level 7 modules

- Core Concepts in Logistics, Operations and Supply Chain Management (20 credits)\*
- The Finance of Supply Chain Management (20 credits)
- Global Procurement and Risk Management (20 credits)
- Sustainable Supply Chain Management (20 credits)
- Supply Chain Analytics and Innovations (20 credits)
- Global Logistics and Transport Management (20 credits)
- Research Methods (20 credits)\*
- Research Project (40 credits)\*

\*Core module (must be passed in order to achieve the award)

## Course overview

**Tuition fee 2021-22:** £11,570 ([learn more](#))

**Indicative duration:** 2 years

**Qualification:** MSc

**Funding options:** [See here](#) for more information

## Start dates

**2021:** September

**2022:** January, April, July

## Entry requirements

For the academic entry route, you must have an undergraduate degree from an approved institution, equivalent to a UK Honours degree, or a relevant professional qualification.

For the work experience entry route, you must have at least three years' relevant work experience within supply chain or logistics.

If English is not your first language, your English ability should be equivalent to an IELTS score of 6.5. If you do not hold an IELTS or equivalent qualification, we will ask you to pass our free online English test.

## **READY TO APPLY?**

**Complete the online application form** and an Admissions Adviser will be in touch to assist you in the enrolment process.

# PG DIP SUPPLY CHAIN MANAGEMENT AND GLOBAL LOGISTICS



Go beyond transport and warehousing with this in-depth postgraduate course that explores the complexities of each stage of the supply chain. The concept of sustainability underpins the entire course and you'll follow the progress of a t-shirt throughout the process to contextualise your studies.

## Syllabus

The PG Dip Supply Chain Management and Global Logistics is made up of the following modules and, upon completion, is equal to a total of 120 credits at Level 7.

### Level 7 modules

- Core Concepts in Logistics, Operations and Supply Chain Management (20 credits)\*
- The Finance of Supply Chain Management (20 credits)
- Global Procurement and Risk Management (20 credits)
- Sustainable Supply Chain Management (20 credits)
- Supply Chain Analytics and Innovations (20 credits)
- Global Logistics and Transport Management (20 credits)

\*Core module (must be passed in order to achieve the award)

## Course overview

**Tuition fee 2021-22:** £7,714 ([learn more](#))

**Indicative duration:** 16 months

**Qualification:** PG Dip

**Funding options:** [See here](#) for more information

## Start dates

**2021:** September

**2022:** January, April, July

## Entry requirements

For the academic entry route, you must have an undergraduate degree from an approved institution, equivalent to a UK Honours degree, or a relevant professional qualification.

For the work experience entry route, you must have at least three years' relevant work experience within supply chain or logistics.

If English is not your first language, your English ability should be equivalent to an IELTS score of 6.5. If you do not hold an IELTS or equivalent qualification, we will ask you to pass our free online English test.

## READY TO APPLY?

**[Complete the online application form](#)** and an Admissions Adviser will be in touch to assist you in the enrolment process.

# PG CERT SUPPLY CHAIN MANAGEMENT AND GLOBAL LOGISTICS



Gain a solid grounding in supply chain management and logistics and position yourself to succeed in this high-demand industry. On this course you will examine the essential processes and procedures that are integral to the smooth operation of supply chains and learn how to evaluate and mitigate the inherent risks.

## Syllabus

The PG Cert Supply Chain Management and Global Logistics is made up of the following modules and, upon completion, is equal to a total of 60 credits at Level 7.

### Level 7 modules

- Core Concepts in Logistics, Operations and Supply Chain Management (20 credits)\*
- Sustainable Supply Chain Management (20 credits)
- Global Logistics and Transport Management (20 credits)

\*Core module (must be passed in order to achieve the award)

## Course overview

**Tuition fee 2021-22:** £3,857 ([learn more](#))

**Indicative duration:** 8 months

**Qualification:** PG Cert

**Funding options:** [See here](#) for more information

## Start dates

**2021:** September

**2022:** January, April, July

## Entry requirements

For the academic entry route, you must have an undergraduate degree from an approved institution, equivalent to a UK Honours degree, or a relevant professional qualification.

For the work experience entry route, you must have at least three years' relevant work experience within supply chain or logistics.

If English is not your first language, your English ability should be equivalent to an IELTS score of 6.5. If you do not hold an IELTS or equivalent qualification, we will ask you to pass our free online English test.

## **READY TO APPLY?**

**Complete the online application form** and an Admissions Adviser will be in touch to assist you in the enrolment process.

# MSc BUSINESS WITH FINANCE



Finance is one of the most challenging parts of managing a business effectively. On this course you will develop your understanding of key financial management and economic topics while improving your managerial and strategic skills. You will be well-prepared for a wide range of roles within banking and financial organisations.

## Syllabus

The MSc Business with Finance is made up of the following modules and, upon completion, is equal to a total of 180 credits at Level 7.

### Level 7 modules

- Business and Management Research Report (40 credits)\*
- Financial Management (20 credits)
- Management: Principle and Practices (20 credits)
- Economics for Managers (20 credits)
- Financial Decision Making (20 credits)
- Project Management (10 credits)
- Business Strategy (10 credits)
- Research Methods (20 credits)\*
- Optional modules equal to 20 credits:
  - Leadership in Practice (20 credits)
  - Marketing: Principles and Practices (20 credits)
  - Human Resource Management (10 credits)
  - Human Resource Management in Context (10 credits)
  - Marketing Strategy and Management (20 credits)

\*Core module (must be passed in order to achieve the award)

## Course overview

**Tuition fee 2021-22:** £11,570 ([learn more](#))

**Indicative duration:** 2 years

**Qualification:** MSc

**Funding options:** [See here](#) for more information

## Start dates

**2021:** September, October

**2022:** January, February, April, May, July

## Entry requirements

For the academic entry route, you must have an undergraduate degree from an approved institution, equivalent to a UK Honours degree, or a relevant professional qualification.

For the work experience entry route, you must have at least five years' senior level work experience.

If English is not your first language, your English ability should be equivalent to an IELTS score of 6.5. If you do not hold an IELTS or equivalent qualification, we will ask you to pass our free online English test.

## READY TO APPLY?

**Complete the online application form** and an Admissions Adviser will be in touch to assist you in the enrolment process.

# PG DIP BUSINESS WITH FINANCE



If you want to succeed in business, an understanding of finance is essential. On this Postgraduate Diploma, you will develop skills that will enable you to understand business income and expenditure, prepare financial statements and reports, and make financial decisions.

## Syllabus

The PG Dip in Business with Finance is made up of the following modules and, upon completion, is equal to a total of 120 credits at Level 7.

### **Level 7 modules**

- Management: Principle and Practices (20 credits)
- Economics for Managers (20 credits)
- Financial Decision Making (20 credits)
- Project Management (10 credits)
- Business Strategy (10 credits)
- Financial Management (20 credits)
- Optional modules equal to 20 credits:
  - Leadership in Practice (20 credits)
  - Marketing: Principles and Practices (20 credits)
  - Human Resource Management (10 credits)
  - Human Resource Management in Context (10 credits)
  - Marketing Strategy and Management (20 credits)

## Course overview

**Tuition fee 2021-22:** £7,714 ([learn more](#))

**Indicative duration:** 16 months

**Qualification:** PG Dip

**Funding options:** [See here](#) for more information

## Start dates

**2021:** September, October

**2022:** January, February, April, May, July

## Entry requirements

For the academic entry route, you must have an undergraduate degree from an approved institution, equivalent to a UK Honours degree, or a relevant professional qualification.

For the work experience entry route, you must have at least five years' senior level work experience.

If English is not your first language, your English ability should be equivalent to an IELTS score of 6.5. If you do not hold an IELTS or equivalent qualification, we will ask you to pass our free online English test.

## **READY TO APPLY?**

**Complete the online application form** and an Admissions Adviser will be in touch to assist you in the enrolment process.



**Our project management courses are designed for those looking to develop the skills required to effectively manage a team, time and resources, delivering projects on schedule and on budget.**

Whether you hope to succeed in a role as a project manager, or within a related capacity in management, consultancy, finance, marketing or sales, our focused Masters degree and shorter courses will allow you to set yourself apart from your peers in the job market.

# PROJECT MANAGEMENT COURSES

Course indicative duration	
MSc Project Management	2 years
PG Dip Project Management	16 months
PG Cert Project Management	8 months

### Why we're great

- Each module is led by experienced tutors, well versed in both academic practice and vocational experience within a range of management contexts.
- During live Q&A sessions with other students and academic staff you have the opportunity to ask questions and network with fellow professionals from around the globe.
- All courses are taught 100% online and part-time, this means you don't need to take a break in your career to study – you can fit your studies around other professional and personal commitments.

**“In every field of business and industry, the effective and efficient management of projects is crucial. Our Project Management programmes provide students with the skills, knowledge and confidence to take on projects and carry them through to successful completion as a professional Project Manager.”**

**Steve Wilks, Head of Business Studies,  
University of Essex Online**

# MSc PROJECT MANAGEMENT



For a wide range of careers, it is a valuable skill to be able to manage resources effectively to complete projects within defined time, cost and quality constraints. This course develops your personal and professional skills in communication, teamwork, leadership, critical evaluation and time management. You will learn practical techniques and gain an in-depth knowledge of best practices managing projects of any size.

## Syllabus

The MSc Project Management is made up of the following modules and, upon completion, is equal to a total of 180 credits at Level 7.

### Level 7 modules

- Management: Principle and Practices (20 credits)
- Financial Decision Making (20 credits)
- Project Management Techniques (20 credits)
- Management of Projects (20 credits)
- Project Analytics (20 credits)
- Leading and Managing Project Teams (20 credits)
- Research Methods (20 credits)\*
- Business and Management Research Report (40 credits)\*

\*Core module (must be passed in order to achieve the award)

## Course overview

**Tuition fee 2021-22:** £11,570 ([learn more](#))

**Indicative duration:** 2 years

**Qualification:** MSc

**Funding options:** [See here](#) for more information

## Start dates

**2021:** September

**2022:** January, April, July

## Entry requirements

For the academic entry route, you must have an undergraduate degree from an approved institution, equivalent to a UK Honours degree, or a relevant professional qualification.

For the work experience entry route, you must have at least five years' senior level work experience.

If English is not your first language, your English ability should be equivalent to an IELTS score of 6.5. If you do not hold an IELTS or equivalent qualification, we will ask you to pass our free online English test.

## READY TO APPLY?

**Complete the online application form** and an Admissions Adviser will be in touch to assist you in the enrolment process.

# PG DIP PROJECT MANAGEMENT



For project managers the efficient transformation of resources into a desired project outcome can be challenging. This postgraduate diploma not only develops your knowledge and skills but also gives you the confidence and ability to succeed in project management.

## Syllabus

The PG Dip Project Management is made up of the following modules and, upon completion, is equal to a total of 120 credits at Level 7.

### Level 7 modules

- Management: Principle and Practices (20 credits)
- Financial Decision Making (20 credits)
- Project Management Techniques (20 credits)
- Management of Projects (20 credits)
- Project Analytics (20 credits)
- Leading and Managing Project Teams (20 credits)

## Course overview

**Tuition fee 2021-22:** £7,714 ([learn more](#))

**Indicative duration:** 16 months

**Qualification:** PG Dip

**Funding options:** [See here](#) for more information

## Start dates

**2021:** September

**2022:** January, April, July

## Entry requirements

For the academic entry route, you must have an undergraduate degree from an approved institution, equivalent to a UK Honours degree, or a relevant professional qualification.

For the work experience entry route, you must have at least five years' senior level work experience.

If English is not your first language, your English ability should be equivalent to an IELTS score of 6.5. If you do not hold an IELTS or equivalent qualification, we will ask you to pass our free online English test.

## **READY TO APPLY?**

**Complete the online application form** and an Admissions Adviser will be in touch to assist you in the enrolment process.

# PG CERT PROJECT MANAGEMENT



This Postgraduate Certificate will provide you with fundamental knowledge and skills of project management. You will develop an understanding of the complexities of modern business and the ability to effectively manage resources.

## Syllabus

The PG Cert Project Management is made up of the following modules and, upon completion, is equal to a total of 60 credits at Level 7.

### **Level 7 modules**

- Management: Principle and Practices (20 credits)
- Project Management Techniques (20 credits)
- Management of Projects (20 credits)

## Course overview

**Tuition fee 2021-22:** £3,857 ([learn more](#))

**Indicative duration:** 8 months

**Qualification:** PG Cert

**Funding options:** [See here](#) for more information

## Start dates

**2021:** September

**2022:** January, April, July

## Entry requirements

For the academic entry route, you must have an undergraduate degree from an approved institution, equivalent to a UK Honours degree, or a relevant professional qualification.

For the work experience entry route, you must have at least five years' senior level work experience.

If English is not your first language, your English ability should be equivalent to an IELTS score of 6.5. If you do not hold an IELTS or equivalent qualification, we will ask you to pass our free online English test.

## **READY TO APPLY?**

**Complete the online application form** and an Admissions Adviser will be in touch to assist you in the enrolment process.



**The IT sector is continually evolving and expanding, and driving a correspondingly high demand for trained professionals.**

Our computing courses are designed for individuals with no previous technical knowledge or experience. You will be introduced to both basic concepts and complex considerations within the fields of computer science or cyber security. You will gain key skills in problem solving and critical thinking, as well as practical skills to develop programs, manage information systems and keep data secure.

# COMPUTING COURSES

Course indicative duration	
MSc Computer Science	2 years
PG Dip Computer Science	16 months
PG Cert Computer Science	8 months
MSc Cyber Security	2 years
PG Dip Cyber Security	16 months
PG Cert Cyber Security	8 months

## Why we're great

- All of the programs, packages and programming languages you need throughout the course are included within the tuition fee, and you will complete projects using our online development environment.
- As a computing professional you will be expected to work collaboratively, and this course prepares you for this with regular group work and joint projects.
- Our courses assume no prior computing knowledge or experience. By the end of your course you will be a well-rounded professional with highly technical capabilities.

**“Our postgraduate programmes will provide you with a strong foundation in key aspects of computing, as well as the appropriate skills to help you become competent global practitioners.”**

**Dr Nkaepe Olaniyi, Head of Computing,  
University of Essex Online**

# MSc COMPUTER SCIENCE



For those looking for a route to break into the in-demand IT industry, this conversion course takes you from computing novice to capable programmer, culminating in your final project in a specialist area. Throughout the course you will explore recent trends and key developments in computer science, as well as learning essential programming languages such as Python and SQL.

## Syllabus

The MSc Computer Science is made up of the following modules and, upon completion, is equal to a total of 180 credits at Level 7.

### Level 7 modules

- Launching into Computer Science (20 credits)\*
- Secure Software Development (Computer Science) (20 credits)
- Object-oriented Information Systems (20 credits)
- Network and Information Security Management (20 credits)
- Software Engineering Project Management (20 credits)
- Research Methods and Professional Practice (20 credits)\*
- MSc Computing Project and Dissertation (60 credits)\*

\*Core module (must be passed in order to achieve the award)

## Course overview

**Tuition fee 2021-22:** £11,570 ([learn more](#))

**Indicative duration:** 2 years

**Qualification:** MSc

**Funding options:** [See here](#) for more information

## Start dates

**2021:** October

**2022:** February, May

## Entry requirements

For the academic entry route, you must have an undergraduate degree from an approved institution, equivalent to a UK Honours degree, or a relevant professional qualification.

For the work experience entry route, you must have at least three years' relevant work experience.

As part of the application process, you will be asked to take a short aptitude test which is designed to test your ability to handle the intellectual and practical demands of the course. Please note that we will consider your performance in the aptitude test as part of your overall application, so if you don't pass the test you may still be accepted onto the course.

If English is not your first language, your English ability should be equivalent to an IELTS score of 6.5. If you do not hold an IELTS or equivalent qualification, we will ask you to pass our free online English test.

## READY TO APPLY?

**Complete the online application form** and an Admissions Adviser will be in touch to assist you in the enrolment process.

# PG DIP COMPUTER SCIENCE



This course explores the broad field of computer science, giving you technical knowhow combined with a pragmatic approach to problem solving, which will be essential as you start your career in computer science.

## Syllabus

The PG Dip Computer Science is made up of the following modules and, upon completion, is equal to a total of 120 credits at Level 7.

### Level 7 modules

- Launching into Computer Science (20 credits)\*
- Secure Software Development (Computer Science) (20 credits)
- Object-oriented Information Systems (20 credits)
- Network and Information Security Management (20 credits)
- Software Engineering Project Management (20 credits)
- Research Methods and Professional Practice (20 credits)\*

\*Core module (must be passed in order to achieve the award)

Course overview

**Tuition fee 2021-22:** £7,714 ([learn more](#))

**Indicative duration:** 16 months

**Qualification:** PG Dip

**Funding options:** [See here](#) for more information

## Start dates

**2021:** October

**2022:** February, May

## Entry requirements

For the academic entry route, you must have an undergraduate degree from an approved institution, equivalent to a UK Honours degree, or a relevant professional qualification.

For the work experience entry route, you must have at least three years' relevant work experience.

As part of the application process, you will be asked to take a short aptitude test which is designed to test your ability to handle the intellectual and practical demands of the course. Please note that we will consider your performance in the aptitude test as part of your overall application, so if you don't pass the test you may still be accepted onto the course.

If English is not your first language, your English ability should be equivalent to an IELTS score of 6.5. If you do not hold an IELTS or equivalent qualification, we will ask you to pass our free online English test.

## READY TO APPLY?

**Complete the online application form** and an Admissions Adviser will be in touch to assist you in the enrolment process.

# PG CERT COMPUTER SCIENCE



This short course will introduce you to the fundamentals of computing, exploring the current trends and best practices in the field. You will gain the technical skills needed to start developing your own programs, while improving your ability to collaborate with others and solve problems with the skills you've gained.

## Syllabus

The PG Cert Computer Science is made up of the following modules and, upon completion, is equal to a total of 60 credits at Level 7.

### Level 7 modules

- Launching into Computer Science (20 credits)\*
- Secure Software Development (Computer Science) (20 credits)
- Object-oriented Information Systems (20 credits)

\*Core module (must be passed in order to achieve the award)

## Course overview

**Tuition fee 2021-22:** £3,857 ([learn more](#))

**Indicative duration:** 8 months

**Qualification:** PG Cert

**Funding options:** [See here](#) for more information

## Start dates

**2021:** October

**2022:** February, May

## Entry requirements

For the academic entry route, you must have an undergraduate degree from an approved institution, equivalent to a UK Honours degree, or a relevant professional qualification.

For the work experience entry route, you must have at least three years' relevant work experience.

As part of the application process, you will be asked to take a short aptitude test which is designed to test your ability to handle the intellectual and practical demands of the course. Please note that we will consider your performance in the aptitude test as part of your overall application, so if you don't pass the test you may still be accepted onto the course.

If English is not your first language, your English ability should be equivalent to an IELTS score of 6.5. If you do not hold an IELTS or equivalent qualification, we will ask you to pass our free online English test.

## READY TO APPLY?

**Complete the online application form** and an Admissions Adviser will be in touch to assist you in the enrolment process.

# MSc CYBER SECURITY



**Gain an insight into all areas of cyber security, including technical approaches, managerial concerns, legal ramifications and the psychological background to breaches. The course will encourage you to prepare for and react to cyber attacks in a measured and decisive way, while building up other essential skills in teamwork and communication.**

## Syllabus

The MSc Cyber Security is made up of the following modules and, upon completion, is equal to a total of 180 credits at Level 7.

### Level 7 modules

- Launching into Cyber Security (20 credits)\*
- Secure Software Development (10 credits)
- The Human Factor (10 credits)
- Network and Information Security Management (20 credits)
- Information Risk Management (10 credits)
- Secure Systems Architecture (10 credits)
- Principles of Forensics and Cyber Law (20 credits)
- Research Methods and Professional Practice (20 credits)\*
- MSc Cyber Security Project (60 credits)\*

\*Core module (must be passed in order to achieve the award)

## Course overview

**Tuition fee 2021-22:** £11,570 ([learn more](#))

**Indicative duration:** 2 years

**Qualification:** MSc

**Funding options:** [See here](#) for more information

## Start dates

**2021:** October

**2022:** February, May

## Entry requirements

For the academic entry route, you must have an undergraduate degree from an approved institution, equivalent to a UK Honours degree, or a relevant professional qualification.

For the work experience entry route, you must have at least three years' relevant work experience.

As part of the application process, you will be asked to take a short aptitude test which is designed to test your ability to handle the intellectual and practical demands of the course. Please note that we will consider your performance in the aptitude test as part of your overall application, so if you don't pass the test you may still be accepted onto the course.

If English is not your first language, your English ability should be equivalent to an IELTS score of 6.5. If you do not hold an IELTS or equivalent qualification, we will ask you to pass our free online English test.

## READY TO APPLY?

**Complete the online application form** and an Admissions Adviser will be in touch to assist you in the enrolment process.

# PG DIP CYBER SECURITY



Develop your ability to implement and manage cyber defences with this course. You will consider technical approaches as well as the commercial and human factors that affect how an organisation responds to a cyber-attack.

## Syllabus

The PG Dip Cyber Security is made up of the following modules and, upon completion, is equal to a total of 120 credits at Level 7.

### Level 7 modules

- Launching into Cyber Security (20 credits)\*
- Secure Software Development (10 credits)
- The Human Factor (10 credits)
- Network and Information Security Management (20 credits)
- Information Risk Management (10 credits)
- Secure Systems Architecture (10 credits)
- Principles of Forensics and Cyber Law (20 credits)
- Research Methods and Professional Practice (20 credits)\*

\*Core module (must be passed in order to achieve the award)

## Course overview

**Tuition fee 2021-22:** £7,714 ([learn more](#))

**Indicative duration:** 16 months

**Qualification:** PG Dip

**Funding options:** [See here](#) for more information

## Start dates

**2021:** October

**2022:** February, May

## Entry requirements

For the academic entry route, you must have an undergraduate degree from an approved institution, equivalent to a UK Honours degree, or a relevant professional qualification.

For the work experience entry route, you must have at least three years' relevant work experience.

As part of the application process, you will be asked to take a short aptitude test which is designed to test your ability to handle the intellectual and practical demands of the course. Please note that we will consider your performance in the aptitude test as part of your overall application, so if you don't pass the test you may still be accepted onto the course.

If English is not your first language, your English ability should be equivalent to an IELTS score of 6.5. If you do not hold an IELTS or equivalent qualification, we will ask you to pass our free online English test.

## READY TO APPLY?

**Complete the online application form** and an Admissions Adviser will be in touch to assist you in the enrolment process.

# PG CERT CYBER SECURITY



Through this course you will gain an understanding of the latest trends in cyber security, as well as some of the key factors in reducing vulnerabilities and promoting defences within digital systems. The course covers the technical aspects that are necessary to consider in order to mitigate risk.

## Syllabus

The PG Cert Cyber Security is made up of the following modules and, upon completion, is equal to a total of 60 credits at Level 7.

### Level 7 modules

- Launching into Cyber Security (20 credits)\*
- Secure Software Development (10 credits)
- Information Risk Management (10 credits)
- Network and Information Security Management (20 credits)

\*Core module (must be passed in order to achieve the award)

## Course overview

**Tuition fee 2021-22:** £3,857 ([learn more](#))

**Indicative duration:** 8 months

**Qualification:** PG Cert

**Funding options:** [See here](#) for more information

## Start dates

**2021:** October

**2022:** February, May

## Entry requirements

For the academic entry route, you must have an undergraduate degree from an approved institution, equivalent to a UK Honours degree, or a relevant professional qualification.

For the work experience entry route, you must have at least three years' relevant work experience.

As part of the application process, you will be asked to take a short aptitude test which is designed to test your ability to handle the intellectual and practical demands of the course. Please note that we will consider your performance in the aptitude test as part of your overall application, so if you don't pass the test you may still be accepted onto the course.

If English is not your first language, your English ability should be equivalent to an IELTS score of 6.5. If you do not hold an IELTS or equivalent qualification, we will ask you to pass our free online English test.

## READY TO APPLY?

**Complete the online application form** and an Admissions Adviser will be in touch to assist you in the enrolment process.



# LAW COURSES

Course indicative duration	
LLM International Business Law	2 years
PG Dip International Business Law	16 months
PG Cert International Business Law	8 months

- Why we're great**
- We offer a specialised degree which explores this complex and highly relevant subject field of law.
  - Much of what you learn is directly applicable to real world scenarios and case studies, quickly transferring the skills you learn during your course to your career.
  - Develop an international network of professional contacts from across the world and from various sectors. More than half of our postgraduate students come from outside the UK, giving you access to a wealth of different perspectives and experiences.

**As businesses increasingly cross international borders, so too must the practice of law change to accommodate commercial activities within the global economy. Understanding business law and the complexities of transnational business interactions could help you to get ahead.**

Studying our courses will help you to develop the knowledge and skills that sets you apart from other legal practitioners. Your specialist expertise could unlock a wide range of career opportunities.

**“It was a great experience for me and I certainly would encourage anyone who felt the motivation to do that to really go for it”**

**Lee Skinner, UK, LLM International Trade and Commercial Law**

# LLM INTERNATIONAL BUSINESS LAW



Through this comprehensive Masters degree you will develop your knowledge of business law and commercial dealings within a global economy. This could open up career opportunities at international law firms, multinational companies and governmental organisations.

## Syllabus

The LLM International Business Law is made up of the following modules and, upon completion, is equal to a total of 180 credits at Level 7.

### Level 7 modules

- International Business Law (20 credits)
- Law of World Trade Organisation (20 credits)
- International Competition Law (20 credits)
- Legal Research Skills and Methods (20 credits)\*
- International Business Law Dissertation (60 credits)\*
- Two optional modules:
  - Commercial Conflict of Laws (20 credits)
  - Intellectual Property Law (20 credits)
  - International Commercial Arbitration Dispute Resolution (20 credits)

\*Core module (must be passed in order to achieve the award)

## Course overview

**Tuition fee 2021-22:** £11,570 ([learn more](#))

**Indicative duration:** 2 years

**Qualification:** LLM

**Funding options:** [See here](#) for more information

## Start dates

**2021:** October

**2022:** February, May

## Entry requirements

For the academic entry route, you must have an undergraduate degree from an approved institution, equivalent to a UK Honours degree, or a relevant professional qualification.

For the work experience entry route, you must have at least five years' senior level work experience.

If English is not your first language, your English ability should be equivalent to an IELTS score of 6.5. If you do not hold an IELTS or equivalent qualification, we will ask you to pass our free online English test.

## READY TO APPLY?

**[Complete the online application form](#)** and an Admissions Adviser will be in touch to assist you in the enrolment process.

# PG DIP INTERNATIONAL BUSINESS LAW



Through this Postgraduate Diploma you will gain specialist legal knowledge and skills which are vital for roles within multinational businesses and international law firms, as well as other roles that would benefit from an understanding of business law.

## Syllabus

The PG Dip International Business Law is made up of the following modules and, upon completion, is equal to a total of 120 credits at Level 7.

### Level 7 modules

- International Business Law (20 credits)
- Law of World Trade Organisation (20 credits)
- International Competition Law (20 credits)
- Legal Research Skills and Methods (20 credits)<sup>†</sup>
- Two optional modules:
  - Commercial Conflict of Laws (20 credits)
  - Intellectual Property Law (20 credits)
  - International Commercial Arbitration Dispute Resolution (20 credits)

<sup>†</sup>Please note that in order to progress to a full LLM students must take and pass Legal Research Skills and Methods module.

## Course overview

**Tuition fee 2021-22:** £7,714 ([learn more](#))

**Indicative duration:** 16 months

**Qualification:** PG Dip

**Funding options:** [See here](#) for more information

## Start dates

**2021:** October

**2022:** February, May

## Entry requirements

For the academic entry route, you must have an undergraduate degree from an approved institution, equivalent to a UK Honours degree, or a relevant professional qualification.

For the work experience entry route, you must have at least five years' senior level work experience.

If English is not your first language, your English ability should be equivalent to an IELTS score of 6.5. If you do not hold an IELTS or equivalent qualification, we will ask you to pass our free online English test.

## READY TO APPLY?

**[Complete the online application form](#)** and an Admissions Adviser will be in touch to assist you in the enrolment process.

# PG CERT INTERNATIONAL BUSINESS LAW



On this Postgraduate Certificate you will gain a solid grounding in international business law. This course will also help you to develop a range of transferable skills that are valued by multinational businesses and international firms.

## Syllabus

The PG Cert International Business Law is made up of the following modules and, upon completion, is equal to a total of 60 credits at Level 7.

### Level 7 modules

- International Business Law (20 credits)
- Law of World Trade Organisation (20 credits)
- International Competition Law (20 credits)

## Course overview

**Tuition fee 2021-22:** £3,857 ([learn more](#))

**Indicative duration:** 8 months

**Qualification:** PG Cert

**Funding options:** [See here](#) for more information

## Start dates

**2021:** October

**2022:** February, May

## Entry requirements

For the academic entry route, you must have an undergraduate degree from an approved institution, equivalent to a UK Honours degree, or a relevant professional qualification.

For the work experience entry route, you must have at least five years' senior level work experience.

If English is not your first language, your English ability should be equivalent to an IELTS score of 6.5. If you do not hold an IELTS or equivalent qualification, we will ask you to pass our free online English test.

## **READY TO APPLY?**

**Complete the online application form** and an Admissions Adviser will be in touch to assist you in the enrolment process.



**Technology is playing an increasingly predominant role within education, helping to make classrooms more interactive and engaging for students. Our courses will help you embrace these new changes while improving your current teaching methods.**

Our postgraduate education programmes enables teachers, trainers and tutors from all backgrounds to reflect on their teaching methods and learn new and innovative techniques. Our courses provide a global outlook, helping you gain insight and inspiration from fellow educational professionals, from across the globe, and from our experienced academic tutors.

# EDUCATION COURSES

## Course indicative duration

Master of Education (M.Ed.)	2 years
PG Dip Education	16 months
PG Cert Education (Educational Practice)	8 months

## Why we're great

- The syllabus reflects real-life practical situations to enable you to develop the skills to access high-level educational, staff development and vocational instructor roles.
- Tutors are highly experienced and versed in educational theory and its practical application in a range of classroom and organisational settings.
- You will have the opportunity to learn and share best practices with peers from a diverse range of cultures and experience levels.

**“Our postgraduate programmes in Education provide a detailed overview of key theories and approaches related to teaching and learning, giving opportunities for reflection and development within practice.”**

**Dr Desma Brown, Head of Education,  
University of Essex Online**

# MASTER OF EDUCATION (M.ED.)



This degree will help you learn the skills and academic approaches to take your teaching methods to the next level. This unique programme is relevant for education professionals who are interested in reflecting on the way they teach and develop practices in an innovative way.

## Syllabus

The Master of Education is made up of the following modules and, upon completion, is equal to a total of 180 credits at Level 7.

### Level 7 modules

- Philosophy of Education and Theories of Learning and Teaching (20 credits)\*
- Delivering Effective Teaching and Learning (20 credits)\*
- Introduction to Educational Assessment (10 credits)
- Using Technology in Teaching, Learning and Assessment (10 credits)
- The Role of Research and Academic Literature in Developing Practice (20 credits)
- Introduction to Learning Analytics (10 credits)
- The Science of Learning – practical implications for teaching (10 credits)
- Research Methods in Teaching and Learning (20 credits)\*
- Dissertation (40 credits)\*
- One optional module:
  - From Teacher to Content Developer (20 credits)
  - From Teacher to Manager (20 credits)
  - From Teacher to Assessment Developer (20 credits)

\*Core module (must be passed in order to achieve the award)

## Course overview

**Tuition fee 2021-22:** £11,570 ([learn more](#))

**Indicative duration:** 2 years

**Qualification:** M.Ed

**Funding options:** [See here](#) for more information

## Start dates

**2021:** September, October

**2022:** January, February, April, May, July

## Entry requirements

For the academic entry route, you must have an undergraduate degree from an approved institution, equivalent to a UK Honours degree, or a relevant professional qualification.

For the work experience entry route, you must have at least two years' experience in a relevant field supported by an appropriate reference.

If English is not your first language, your English ability should be equivalent to an IELTS score of 6.5. If you do not hold an IELTS or equivalent qualification, we will ask you to pass our free online English test.

## READY TO APPLY?

**[Complete the online application form](#)** and an Admissions Adviser will be in touch to assist you in the enrolment process.

# PG DIP EDUCATION



Are you keen to enhance your approach to teaching, and learn about new strategies and philosophies? If so, then this Postgraduate Diploma is for you, helping you embrace technology to improve your teaching methods and increase classroom interaction.

## Syllabus

The PG Dip Education is made up of the following modules and, upon completion, is equal to a total of 120 credits at Level 7.

### Level 7 modules

- Philosophy of Education and Theories of Learning and Teaching (20 credits)\*
- Delivering Effective Teaching and Learning (20 credits)\*
- Introduction to Educational Assessment (10 credits)
- Using Technology in Teaching, Learning and Assessment (10 credits)
- The Role of Research and Academic Literature in Developing Practice (20 credits)
- Introduction to Learning Analytics (10 credits)
- The Science of Learning – practical implications for teaching (10 credits)
- One optional module:
  - From Teacher to Content Developer (20 credits)
  - From Teacher to Manager (20 credits)
  - From Teacher to Assessment Developer (20 credits)

\*Core module (must be passed in order to achieve the award)

## Course overview

**Tuition fee 2021-22:** £7,714 ([learn more](#))

**Indicative duration:** 16 months

**Qualification:** PG Dip

**Funding options:** [See here](#) for more information

## Start dates

**2021:** September, October

**2022:** January, February, April, May, July

## Entry requirements

For the academic entry route, you must have an undergraduate degree from an approved institution, equivalent to a UK Honours degree, or a relevant professional qualification.

For the work experience entry route, you must have at least two years' experience in a relevant field supported by an appropriate reference.

If English is not your first language, your English ability should be equivalent to an IELTS score of 6.5. If you do not hold an IELTS or equivalent qualification, we will ask you to pass our free online English test.

## READY TO APPLY?

**[Complete the online application form](#)** and an Admissions Adviser will be in touch to assist you in the enrolment process.

# PG CERT EDUCATION (EDUCATIONAL PRACTICE)



On this Postgraduate Certificate you will have a great opportunity to learn about different theories of learning, philosophy and education, led by our expert tutors. It provides the perfect foundation in which to develop your current teaching practices and approach to learning.

## Syllabus

The PG Cert Education (Educational Practice) is made up of the following modules and, upon completion, is equal to a total of 60 credits at Level 7.

### Level 7 modules

- Philosophy of Education and Theories of Learning and Teaching (20 credits)\*
- Delivering Effective Teaching and Learning (20 credits)\*
- Introduction to Educational Assessment (10 credits)
- Using Technology in Teaching, Learning and Assessment (10 credits)

\*Core module (must be passed in order to achieve the award)

## Course overview

**Tuition fee 2021-22:** £3,857 ([learn more](#))

**Indicative duration:** 8 months

**Qualification:** PG Cert

**Funding options:** [See here](#) for more information

## Start dates

**2021:** September, October

**2022:** January, February, April, May, July

## Entry requirements

For the academic entry route, you must have an undergraduate degree from an approved institution, equivalent to a UK Honours degree, or a relevant professional qualification.

For the work experience entry route, you must have at least two years' experience in a relevant field supported by an appropriate reference.

If English is not your first language, your English ability should be equivalent to an IELTS score of 6.5. If you do not hold an IELTS or equivalent qualification, we will ask you to pass our free online English test.

## **READY TO APPLY?**

**Complete the online application form** and an Admissions Adviser will be in touch to assist you in the enrolment process.

Please note that PG Cert Education (Educational Practice) is not an equivalent to a PGCE qualification, which is a teacher training qualification in the UK.



**Transform your career in healthcare by developing the knowledge and practical skills to drive substantial improvements in patient care, disease prevention and public health.**

Through our specialist postgraduate programmes, you'll gain an understanding of key concepts within healthcare and learn the latest best practices, that will equip you with the experience to make a difference in your place of work.

You can choose from a range of pathways: public health, infection control, international healthcare management or nursing.

# HEALTH COURSES

Course indicative duration	
MSc International Healthcare Management	2 years
PG Dip International Healthcare Management	16 months
PG Cert International Healthcare Management	8 months

### Why we're great

- You will be taught by subject experts and industry leaders possessing both academic and industry experience – you will be learning from professionals who are well versed in their specialist field.
- All our courses are designed to help you reach the next stage in your chosen career path. That's why we offer a broad range of course options so you can find one that is suited to your career aspirations.
- During your course you will be assessed through a mixture of different methods, but no exams, so no late-night exam cramming, or hours spent revising! Instead you will be assessed through written coursework including an individual dissertation.

**“The shared experience around the module discussions has been a great learning platform. It has been wonderful speaking to my course mates across the globe.”**

**Obinna Orjingen, Nigeria**  
**Master of Public Health (MPH)**

# MSc INTERNATIONAL HEALTHCARE MANAGEMENT



This degree drills down into the issues healthcare professionals face on a daily basis. Through your studies you will learn how to make decisions and implement changes based on the issues you are facing in your own healthcare environment.

## Syllabus

The MSc International Healthcare Management is made up of the following modules and, upon completion, is equal to a total of 180 credits at Level 7.

### Level 7 modules

- Health Economics (20 credits)
- Financial Decision Making (20 credits)
- Strategic Management in Healthcare (20 credits)
- Healthcare Leadership in Practice (20 credits)
- Healthcare Management: Principle and Practices (20 credits)
- Research Methods (20 credits)\*
- Healthcare Management Dissertation (40 credits)\*
- One optional module:
  - Social Marketing (20 credits)
  - Healthcare Improvement (20 credits)
  - Social, Political and Ethical Issues in Healthcare (20 credits)

\*Core module (must be passed in order to achieve the award)

## Course overview

**Tuition fee 2021-22:** £11,570 ([learn more](#))

**Indicative duration:** 2 years

**Qualification:** MSc

**Funding options:** [See here](#) for more information

## Start dates

**2021:** September, October

**2022:** January, February, April, May, July

## Entry requirements

For the academic entry route, you must have an undergraduate degree from an approved institution, equivalent to a UK Honours degree, or a relevant professional qualification.

For the work experience entry route, you must have at least 3 years' experience in a relevant field, supported by appropriate references.

If English is not your first language, your English ability should be equivalent to an IELTS score of 6.5. If you do not hold an IELTS or equivalent qualification, we will ask you to pass our free online English test.

## READY TO APPLY?

**[Complete the online application form](#)** and an Admissions Adviser will be in touch to assist you in the enrolment process.

# PG DIP INTERNATIONAL HEALTHCARE MANAGEMENT



This postgraduate diploma highlights the challenges faced when working in global healthcare. Your course syllabus will include modules on management theory, critical understanding of leadership and challenges within a global healthcare environment.

## Syllabus

The PG Dip International Healthcare Management is made up of the following modules and, upon completion, is equal to a total of 120 credits at Level 7.

### Level 7 modules

- Health Economics (20 credits)
- Financial Decision Making (20 credits)
- Strategic Management in Healthcare (20 credits)
- Healthcare Leadership in Practice (20 credits)
- Healthcare Management: Principle and Practices (20 credits)
- One optional module:
  - Social Marketing (20 credits)
  - Healthcare Improvement (20 credits)
  - Social, Political and Ethical Issues in Healthcare (20 credits)

## Course overview

**Tuition fee 2021-22:** £7,714 ([learn more](#))

**Indicative duration:** 16 months

**Qualification:** PG Dip

**Funding options:** [See here](#) for more information

## Start dates

**2021:** September, October

**2022:** January, February, April, May, July

## Entry requirements

For the academic entry route, you must have an undergraduate degree from an approved institution, equivalent to a UK Honours degree, or a relevant professional qualification.

For the work experience entry route, you must have at least 3 years' experience in a relevant field, supported by appropriate references.

If English is not your first language, your English ability should be equivalent to an IELTS score of 6.5. If you do not hold an IELTS or equivalent qualification, we will ask you to pass our free online English test.

## **READY TO APPLY?**

**Complete the online application form** and an Admissions Adviser will be in touch to assist you in the enrolment process.

# PG CERT INTERNATIONAL HEALTHCARE MANAGEMENT



Are you looking to get started in a career in international healthcare? If so, then this Postgraduate Certificate could be perfect for you! It will allow you to explore the world of global healthcare, gain an insight into management practices and take the first steps towards a leadership role.

## Syllabus

The PG Cert International Healthcare Management is made up of the following modules and, upon completion, is equal to a total of 60 credits at Level 7.

### Level 7 modules

- Strategic Management in Healthcare (20 credits)
- Healthcare Leadership in Practice (20 credits)
- Healthcare Management: Principle and Practices (20 credits)

## Course overview

**Tuition fee 2021-22:** £3,857 ([learn more](#))

**Indicative duration:** 8 months

**Qualification:** PG Cert

**Funding options:** [See here](#) for more information

## Start dates

**2021:** September, October

**2022:** January, February, April, May, July

## Entry requirements

For the academic entry route, you must have an undergraduate degree from an approved institution, equivalent to a UK Honours degree, or a relevant professional qualification.

For the work experience entry route, you must have at least 3 years' experience in a relevant field, supported by appropriate references.

If English is not your first language, your English ability should be equivalent to an IELTS score of 6.5. If you do not hold an IELTS or equivalent qualification, we will ask you to pass our free online English test.

## **READY TO APPLY?**

**Complete the online application form** and an Admissions Adviser will be in touch to assist you in the enrolment process.



**Psychology is a fascinating subject that helps us understand human behaviour, emotions, experiences, influences and thoughts.**

Our courses provide you with the opportunity to pursue a broad range of careers related to psychology, within healthcare, counselling, human resources, sales and marketing, the civil service and many other industries. You will also be able to progress towards further education in psychology in order to work directly within the field.

# PSYCHOLOGY COURSES

Course indicative duration	
MSc Psychology	2 years
PG Dip Psychology	16 months
PG Cert Psychology	8 months
MSc Organisational Psychology	2 years
PG Dip Organisational Psychology	16 months
PG Cert Organisational Psychology	8 months

### Why we're great

- You will explore a range of focused psychology modules that introduce you to key concepts such as psychological inquiry and research methods.
- We encourage you to develop your employability and transferable skills, including communication, critical thinking, reasoning and problem solving, in addition to research skills such as interviewing, understanding of ethics, numeracy and many more.
- Our courses are 100% assignment and project-based and offer you the opportunity to collaborate and interact with your tutors and other students from around the world.

**“Our postgraduate programmes in psychology will advance your understanding of key theories and approaches, whilst developing your research skills and employability. You will gain the knowledge and skills essential for many psychology and non-psychology related careers.”**

**Dr Lisa Pepper, Head of Psychology  
University of Essex Online**

# MSc PSYCHOLOGY



This postgraduate degree is for talented individuals who might not have studied psychology before. You will explore a wide range of theoretical ideas and practical applications of psychology. In addition, the degree has a strong focus on employability, and you will gain key research and transferable skills that will be beneficial across a range of careers.

## Syllabus

The MSc Psychology is made up of the following modules and, upon completion, is equal to a total of 180 credits at Level 7.

### Level 7 modules

- Fundamentals of Psychological Enquiry (10 credits)
- Human Development over the Lifespan (20 credits)\*
- Psychological Research Methods (10 credits)\*
- Critical Social Psychology (20 credits)\*
- Advanced Research Methods (20 credits)\*
- Psychobiology and Neuroscience (20 credits)\*
- Psychology Skills and Employability (20 credits)
- MSc Psychology Dissertation (60 credits)\*

\*Core module (must be passed in order to achieve the award)

## Course overview

**Tuition fee 2021-22:** £11,570 ([learn more](#))

**Indicative duration:** 2 years

**Qualification:** MSc

**Funding options:** [See here](#) for more information

## Start dates

**2021:** October

**2022:** February, May

## Entry requirements

For the academic entry route, you must have an undergraduate degree from an approved institution, equivalent to a UK Honours degree, or a relevant professional qualification.

For the work experience entry route, you must have at least 3 years' experience (voluntary or paid) within a relevant field, supported by 2 appropriate references.

If English is not your first language, your English ability should be equivalent to an IELTS score of 6.5. If you do not hold an IELTS or equivalent qualification, we will ask you to pass our free online English test.

## READY TO APPLY?

**[Complete the online application form](#)** and an Admissions Adviser will be in touch to assist you in the enrolment process.

# PG DIP PSYCHOLOGY



Through this course you will gain a grounding of the core areas within psychology. You will build an understanding of the theory and practices within this field and develop key research and evaluation skills.

## Syllabus

The PG Dip Psychology is made up of the following modules and, upon completion, is equal to a total of 120 credits at Level 7.

### Level 7 modules

- Fundamentals of Psychological Enquiry (10 credits)
- Human Development over the Lifespan (20 credits)\*
- Psychological Research Methods (10 credits)\*
- Critical Social Psychology (20 credits)\*
- Advanced Research Methods (20 credits)\*
- Psychobiology and Neuroscience (20 credits)\*
- Psychology Skills and Employability (20 credits)

\*Core module (must be passed in order to achieve the award)

## Course overview

**Tuition fee 2021-22:** £7,714 ([learn more](#))

**Indicative duration:** 16 months

**Qualification:** PG Dip

**Funding options:** [See here](#) for more information

## Start dates

**2021:** October

**2022:** February, May

## Entry requirements

For the academic entry route, you must have an undergraduate degree from an approved institution, equivalent to a UK Honours degree, or a relevant professional qualification.

For the work experience entry route, you must have at least 3 years' experience (voluntary or paid) within a relevant field, supported by 2 appropriate references.

If English is not your first language, your English ability should be equivalent to an IELTS score of 6.5. If you do not hold an IELTS or equivalent qualification, we will ask you to pass our free online English test.

## READY TO APPLY?

**Complete the online application form** and an Admissions Adviser will be in touch to assist you in the enrolment process.

# PG CERT PSYCHOLOGY



Through this course you will be introduced to the essential areas of psychology. You will gain an insight into key principles, theories and methods and develop transferable skills in communication, critical analysis, research and time management.

## Syllabus

The PG Cert Psychology is made up of the following modules and, upon completion, is equal to a total of 60 credits at Level 7.

### **Level 7 modules**

- Fundamentals of Psychological Enquiry (10 credits)
- Human Development over the Lifespan (20 credits)\*
- Psychological Research Methods (10 credits)\*
- Critical Social Psychology (20 credits)\*

\*Core module (must be passed in order to achieve the award)

## Course overview

**Tuition fee 2021-22:** £3,857 ([learn more](#))

**Indicative duration:** 8 months

**Qualification:** PG Cert

**Funding options:** [See here](#) for more information

## Start dates

**2021:** October

**2022:** February, May

## Entry requirements

For the academic entry route, you must have an undergraduate degree from an approved institution, equivalent to a UK Honours degree, or a relevant professional qualification.

For the work experience entry route, you must have at least 3 years' experience (voluntary or paid) within a relevant field, supported by 2 appropriate references.

If English is not your first language, your English ability should be equivalent to an IELTS score of 6.5. If you do not hold an IELTS or equivalent qualification, we will ask you to pass our free online English test.

## **READY TO APPLY?**

**Complete the online application form** and an Admissions Adviser will be in touch to assist you in the enrolment process.

# MSc ORGANISATIONAL PSYCHOLOGY



This Masters degree is for individuals with an interest in organisational psychology and those who may not necessarily have a background in this field. The knowledge and skills you'll develop on this degree are highly sought after by businesses. You will be able to apply psychological theories and research methods to the world of work to solve problems with organisations and their people.

## Syllabus

The MSc Organisational Psychology is made up of the following modules and, upon completion, is equal to a total of 180 credits at Level 7.

### Level 7 modules

- Core Principles of Psychological Enquiry (10 credits)\*
- Strategic Human Resource Development (20 credits)\*
- Research Methods (10 credits)\*
- Psychological Assessment at Work (20 credits)\*
- Mentoring and Coaching for Organisational Effectiveness (20 credits)\*
- One optional module:
  - Global Environment and People Management (20 credits)
  - Diversity Management in a Global Economy (20 credits)
  - Leadership and Management Development (20 credits)
- Applied Research Methods (20 credits)\*
- MSc Psychology Dissertation (60 credits)\*

\*Core module (must be passed in order to achieve the award)

## Course overview

**Tuition fee 2021-22:** £11,570 ([learn more](#))

**Indicative duration:** 2 years

**Qualification:** MSc

**Funding options:** [See here](#) for more information

## Start dates

**2021:** October

**2022:** February, May

## Entry requirements

For the academic entry route, you must have an undergraduate degree from an approved institution, equivalent to a UK Honours degree, or a relevant professional qualification.

For the work experience entry route, you must have at least 3 years' experience (voluntary or paid) within a relevant field, supported by 2 appropriate references.

If English is not your first language, your English ability should be equivalent to an IELTS score of 6.5. If you do not hold an IELTS or equivalent qualification, we will ask you to pass our free online English test.

## READY TO APPLY?

**[Complete the online application form](#)** and an Admissions Adviser will be in touch to assist you in the enrolment process.

# PG DIP ORGANISATIONAL PSYCHOLOGY



On this Postgraduate Diploma you will gain an understanding of the key areas within organisational psychology. You will develop knowledge of theory and practices within this field which will enable you to effectively advise businesses on their challenges, from organisational structures to motivating employees.

## Syllabus

The PG Dip Organisational Psychology is made up of the following modules and, upon completion, is equal to a total of 120 credits at Level 7.

### Level 7 modules

- Core Principles of Psychological Enquiry (10 credits)\*
- Strategic Human Resource Development (20 credits)\*
- Research Methods (10 credits)\*
- Psychological Assessment at Work (20 credits)\*
- Mentoring and Coaching for Organisational Effectiveness (20 credits)\*
- One optional module:
  - Global Environment and People Management (20 credits)
  - Diversity Management in a Global Economy (20 credits)
  - Leadership and Management Development (20 credits)
- Applied Research Methods (20 credits)\*

\*Core module (must be passed in order to achieve the award)

## Course overview

**Tuition fee 2021-22:** £7,714 ([learn more](#))

**Indicative duration:** 16 months

**Qualification:** PG Dip

**Funding options:** [See here](#) for more information

## Start dates

**2021:** October

**2022:** February, May

## Entry requirements

For the academic entry route, you must have an undergraduate degree from an approved institution, equivalent to a UK Honours degree, or a relevant professional qualification.

For the work experience entry route, you must have at least 3 years' experience (voluntary or paid) within a relevant field, supported by 2 appropriate references.

If English is not your first language, your English ability should be equivalent to an IELTS score of 6.5. If you do not hold an IELTS or equivalent qualification, we will ask you to pass our free online English test.

## READY TO APPLY?

**[Complete the online application form](#)** and an Admissions Adviser will be in touch to assist you in the enrolment process.

# PG CERT ORGANISATIONAL PSYCHOLOGY



Through this Postgraduate Certificate you will build the foundations for a career as an organisational psychologist. This course will also provide you with transferable skills that are useful for roles in marketing and management related disciplines.

## Syllabus

The PG Cert Organisational Psychology is made up of the following modules and, upon completion, is equal to a total of 60 credits at Level 7.

### Level 7 modules

- Core Principles of Psychological Enquiry (10 credits)\*
- Strategic Human Resource Development (20 credits)\*
- Research Methods (10 credits)\*
- Psychological Assessment at Work (20 credits)\*

\*Core module (must be passed in order to achieve the award)

## Course overview

**Tuition fee 2021-22:** £3,857 ([learn more](#))

**Indicative duration:** 8 months

**Qualification:** PG Cert

**Funding options:** [See here](#) for more information

## Start dates

**2021:** October

**2022:** February, May

## Entry requirements

For the academic entry route, you must have an undergraduate degree from an approved institution, equivalent to a UK Honours degree, or a relevant professional qualification.

For the work experience entry route, you must have at least 3 years' experience (voluntary or paid) within a relevant field, supported by 2 appropriate references.

If English is not your first language, your English ability should be equivalent to an IELTS score of 6.5. If you do not hold an IELTS or equivalent qualification, we will ask you to pass our free online English test.

## **READY TO APPLY?**

**Complete the online application form** and an Admissions Adviser will be in touch to assist you in the enrolment process.

# IMPORTANT STUFF

**This is an important decision – perhaps one of the most important decisions you'll ever make.**

So we've put together all the information you need about funding your degree and applying to study. If you have any questions, our friendly Admissions team will be happy to talk it over with you.



# FEES AND FUNDING

We know that cost is a huge factor in any decision you make to study.

That's why we have a range of funding options to choose from and a knowledgeable team on hand to help you make the right decisions about financing your studies.

Programme	Full course fee (2021-22)*	Indicative study duration**	Credits
PG Cert	£3,857	8 months	60
PG Dip	£7,714	16 months	120
MSc	£11,570	2 years	180
M.Ed.	£11,570	2 years	180
MPH	£11,570	2 years	180
LLM	£11,570	2 years	180
MBM	£11,570	2 years	180
MBA	£13,500	2 years	180

\*Prices are reviewed annually. We reserve the right to increase tuition fees in line with the RPI-X index. If you pay your tuition fees annually in advance the tuition fees will not be increased before your next annual payment. Please read our [Terms and Conditions](#) for more details.

\*\*The indicative study duration is a guide to how long your course will take to complete. The actual duration may vary depending on study options chosen and module availability.

All tuition fees shown are net of any applicable sales tax payable by you in your country of residence. Where we are required to add sales tax at the local statutory rate, this will be added to the tuition fees shown and confirmed during the payment process.



## Payment options

We provide a simple monthly payment plan to spread the cost of your tuition fee.

Alternatively, you may pay your course fee up front. We offer a 5% discount to anyone who makes the full tuition fee payment up front.

## Money back guarantee

Our 21-day money back guarantee means that it is possible for you to try out the online learning experience and confirm that it is right for you.

If after three weeks you are not satisfied with the course you can receive a full refund. [Terms and Conditions](#) apply.

# SCHOLARSHIPS AND DISCOUNTS

**As part of our mission to make education more accessible, we have a range of options available to reduce the cost of your learning.**

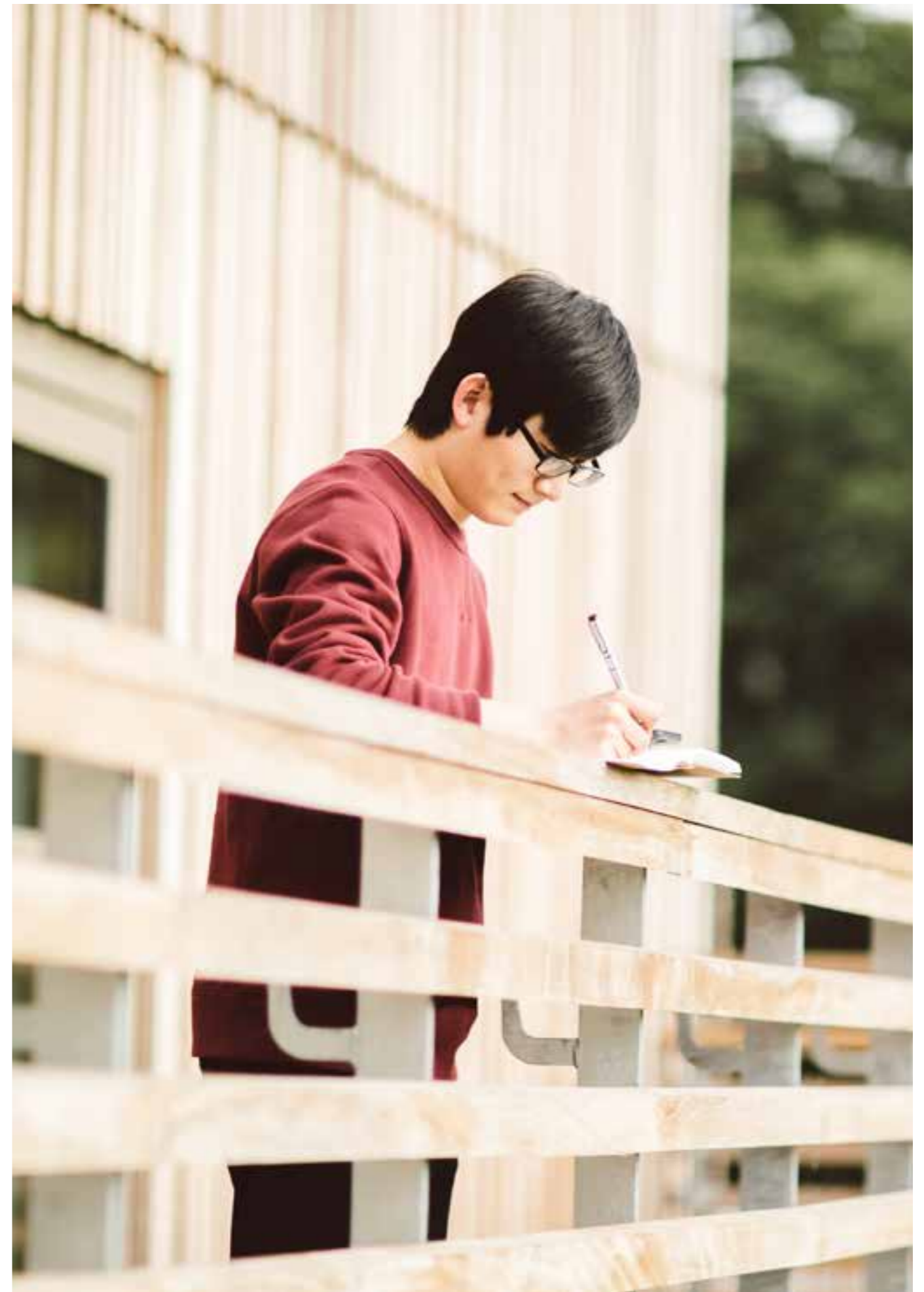
## **Full payment discount**

If you choose to pay your full course fee up front, we'll apply a 5% discount.\*

\*This is only applicable to students studying online and does not apply to students studying on campus.

## **Alumni discount**

If you have already completed an undergraduate degree with the University of Essex or University of Essex Online, you are eligible for a 10% alumni discount on any of our Masters degrees. The Alumni discount cannot be used in combination with any scholarships.\*



# STEPS TO JOIN ESSEX ONLINE



# ENTRY REQUIREMENTS



**We consider all applications on an individual basis, taking into account your professional background and work experience as well as any previous academic achievements.**

For more detailed information on the specific entry requirements for each postgraduate course please check the course page in this prospectus.

**APPLY NOW**

**Excited to get started? Submit an online application here.**

Got some questions? Simply **get in touch** and our experienced course consultants would be happy to help.



# IMPORTANT INFORMATION

## About this prospectus

### **When we might make changes to advertised courses and other information**

This prospectus is intended to answer your questions about the academic provision on offer at University of Essex Online. It was prepared in 2021 and refers to courses which will be available in the 2021-22 academic year. We have made every effort to ensure the prospectus is accurate at the time it is produced.

It can be necessary to make minor changes to our courses or our **Terms and Conditions**. Reasons for this may include: to reflect changes in relevant laws and regulatory requirements; to implement minor technical adjustments and improvements, to ensure consistency with UK higher education sector practice and guidance, including complying with our obligations under the Quality Code. In exceptional circumstances it may be necessary to make more significant changes to a course or our **Terms and Conditions**. Changes may include:

- to increase tuition fees annually to proportionately reflect the costs associated with establishing and providing the course, such as any changes in higher education funding we may receive
- to correct errors
- by adding or removing optional modules
- if a third party such as the University of Essex or the Student Loans Company imposes changes on us, such as amending a policy or procedure

If a course change or closure is proposed in such circumstances, we will take all reasonable steps to minimise disruption to students. This will include informing students of the changes in advance and giving them appropriate opportunity to comment on the proposals.

### **No liability for matters outside our control**

We are not responsible for delays or inaccessibility outside our control. If our provision of courses is delayed or the learning platform is inaccessible due to an event outside our control, then we will contact you as soon as possible to let you know and we will take steps to minimise the effect. Provided we do this we will not be liable for delays or inaccessibility caused by the event, but if there is a risk of substantial delay or inaccessibility you may contact us to end the contract, and receive a refund for any part of a course you have paid for but not received.

## Admissions Policy

Applicants are considered in line with our **Admissions Policy**.

## Terms and Conditions

If we approve your application, we will send you an offer letter which will confirm the details of your course and start date. We will also send you a study plan showing an indicative study duration for your course and a payment plan outlining your net tuition fees. The offer letter will contain a link to our acceptance form.

Acceptance of your application will take place when you use the link on the offer letter you receive from us and submit the online acceptance form. At this point a contract will come into existence between you and us. By submitting the online acceptance form you are formally accepting your place on the course and start date as set out in your offer letter. Submission of the acceptance form also constitutes your agreement to our **Terms and Conditions**.

## Key policies

Our policies are available at:  
**[online.essex.ac.uk/policies](https://online.essex.ac.uk/policies)**

## Quality assurance and teaching excellence

University of Essex Online programmes are delivered by Kaplan Open Learning, an experienced online learning provider. We have been working in partnership with the University of Essex since 2007.

We are registered with the **Office for Students**. That means we meet its requirements for course quality, student support and more. This includes meeting the expectations for standards and quality that are set out in the **UK Quality Code for higher education**. Our dedication to offering our students a transformational education has led to Kaplan Open Learning being awarded the highest rating of gold in the Teaching Excellence Framework (2018). The gold rating demonstrates the institution delivers consistently outstanding teaching, learning and outcomes for its students and is of the highest quality found in the UK.

**Kaplan Open Learning** is part of Kaplan, Inc., one of the world's largest and most diverse education providers. We encourage our students to transform their lives and careers by delivering and expanding our suite of innovative, industry led and career enhancing higher education programmes.

## Complaints procedure

University of Essex Online welcomes applications from all candidates with the potential to succeed. Our admissions procedures are designed to ensure that all applicants are considered wholly based on their aptitudes, skills and abilities in relation to their chosen programme of study. We recognise, however, that there may be occasions when applicants may feel that we have not adhered to our policies and the high standards that we set ourselves. Our **Complaints and Appeals Policy** for Applicants describes the process to follow if an applicant believes that they have grounds for an appeal or complaint.

## Policy statement on equality and diversity

University of Essex Online recognises the value of diversity. We are committed to equality of opportunity for our students. We expect students to be treated with dignity and respect solely on the basis of their merits, abilities and potential, regardless of age, disability, sexual orientation, gender identity and gender expression, marriage and civil partnership, pregnancy and

maternity, race, religion or belief, socio-economic background, political beliefs and affiliations, family circumstances or other irrelevant distinction.

## Tuition fee increases during your studies

The full tuition fees are advertised on **our website**. Full tuition fees include the cost of all core e-books. The applicable net tuition fees for your course will be shown on your payment plan. Tuition fees are reviewed annually. We reserve the right to increase tuition fees for current students in line with the RPI-X index and apply applicable sales taxes.

## Money back guarantee

We stand behind the academic quality of our online courses and are committed to ensuring that you are enrolled on a course that's right for you. But if you decide it's not for you within the first 21 days then you can withdraw from your programme without any cost.

You may end your contract with us and not be charged any tuition fees (or obtain a full refund if you have paid them) at any time up until 21 days from the start date of your course. **Terms and Conditions** apply.

## Photography

Every effort has been made to obtain permission to reproduce the images contained herein. Get in touch if you have any queries or any information relating to the images.

## Data for marketing purposes

Data has been selected for marketing purposes, but all claims are based on the most recent data that were available at the time of publishing.

Produced by the University of Essex Online Marketing team.

Please consider the environment before printing this document.

**WE ARE ESSEX ONLINE.** IF YOU GIVE UP AT THE FIRST OBSTACLE, ESSEX ONLINE ISN'T FOR YOU. IF YOU WANT TO BE SPOON-FED A COURSE, ESSEX ONLINE ISN'T FOR YOU. IF YOU'RE WILLING TO **MAKE SACRIFICES AND WORK HARD**, ESSEX ONLINE IS FOR YOU. WE'RE ON THE SIDE OF PEOPLE WITH **GRIT AND PERSEVERANCE**. WE'RE ABOUT PEOPLE WHO ARE BOLD ENOUGH TO **CHALLENGE THE STATUS QUO**. WE'RE AFTER PEOPLE WHO DEFY THE NAYSAYERS, BECAUSE **CHALLENGING CONVENTION** IS IN ON OUR DNA. WE WANT PEOPLE WHO LOVE TO LEARN HOW BUT ALSO **WANT TO CHALLENGE WHY**. IT DOESN'T MATTER WHERE YOU'RE FROM, WHAT YOU DO OR WHAT STAGE IN LIFE YOU'RE AT. WE'RE INTERESTED IN HOW YOU WANT TO GROW AND **WHAT YOU WANT TO CHANGE**. WE'LL PROVIDE YOU WITH THE KNOWLEDGE AND SKILLS TO **TRANSFORM LIVES: YOURS AND THOSE AROUND YOU**. WE'LL CONNECT YOU WITH PEOPLE FROM ALL CORNERS OF THE WORLD – **A TRULY GLOBAL COMMUNITY**. SO, ARE YOU GOING TO SIT AND WATCH THE WORLD GO BY? OR DO YOU HAVE THE NERVE TO **FACE CHALLENGES HEAD ON?** WE'LL BE HERE EVERY STEP OF THE WAY HELPING YOU **REALISE YOUR AMBITIONS**. IF YOU'RE READY – **WELCOME HOME.**



**KAPLAN** HIGHER  
EDUCATION

kic.org.cn | kolchina@kaplan.com | (86) 10 64608373-366

🐼 Kaplan国际教育

🗨️ kicpathways