



**WE
ARE
ESSEX
ONLINE**

**Undergraduate
Prospectus 2021-22**



University of Essex

Online



CONTENTS

We are Essex Online	4
Our highlights	6
Realise your ambitions	7
Our student community	8
Student stories	
Get the student perspective	17
The online study experience	18
Student support	20
Essex Online perks	22
Developing your employability	24
Graduation at Essex	26
Virtual events	29
Taster courses	29
<u>Our courses</u>	
Business courses	32
Law courses	42
Health courses	48
Psychology courses	54
Combined courses	60
<u>Important stuff</u>	
Fees and funding	84
Student loans	86
Scholarships and discounts	88
Steps to join Essex Online	90
Entry requirements	92
Important information	94

WE ARE ESSEX ONLINE



University of Essex Online courses are delivered by Kaplan Open Learning in partnership with the University of Essex. Since 2007, we've offered high-quality 100% online and part-time programmes at undergraduate and postgraduate level.

We strive to make higher education accessible to anyone with the potential and drive to succeed. We design and deliver innovative, industry-led and career-enhancing programmes that enable our students to transform their lives.

From day one until you graduate, you will be supported by our dedicated student support advisers and study skills specialists who will guide you and help you to build up your academic skills. Additionally, our module tutors who are leading authorities and specialists in their fields will provide you with unparalleled academic support during your studies with us. It's superb support like this that has earned us an 95% rating for overall student satisfaction in the National Student Survey (NSS 2021), the highest when compared to other mainstream universities* in the UK, well above the national average of 75%.

All our qualifications are awarded by the University of Essex, an award-winning institution with a 50-year heritage. Essex is part of the elite group of "dual intensive" universities for teaching and research excellence – it is rated 27th in the UK by the Complete University Guide (CUG 2022)



WINNER
UNIVERSITY
OF THE YEAR

THE AWARDS
2018

*Mainstream universities are those with University title, excluding University Centres and Colleges.

OUR HIGHLIGHTS

No. 1 for student satisfaction

We're the highest rated provider among mainstream universities* in the UK, with an 95% overall student satisfaction rating, well above the national average of 75% in the National Student Survey (NSS 2021)



University of the Year

The University of Essex, Times Higher Education Awards (THE 2018)



22nd in the world

The University of Essex, for International Outlook in the Times Higher Education World University rankings (THE 2021)



Top 30 in the UK

The University of Essex, is ranked 27th in the Complete University Guide (CUG 2022)



REALISE YOUR AMBITIONS

Maybe you want to push your career further. Perhaps you're craving a personal challenge. Whatever your reasons, Essex Online is the place for you.

Our transformative education isn't just about what you learn through our virtual learning environment. With an Essex Online education, you will be equipped to take on the challenges of the world, personal or professional, and make an impact. With Essex Online on your side you can make a difference; we will provide you with the knowledge, skills and support to develop your ways of working, your understanding of your subject and the world around you, to unlock the power of your own ideas and to make your mark on the world.

Whatever stage in life you're at, you'll be able to balance our courses with working full-time, raising a family, trekking across the globe or even as a pastime during your retirement. Whatever your reason for studying or your future plans, we can help you get to the end goal – being an Essex Online graduate.

OUR STUDENT COMMUNITY

Our student network spans over 140 countries and we've already had over 3,000 students in graduation gowns. Will you be one of them?



Ambitious

Our students won't be spoon-fed a degree; they will earn it through an intellectual, cultural and social journey that demands hard work and commitment.

Independent thinkers

Exploring beyond conventional wisdom, our students collaborate and generously share their ideas to inspire others.

Multi-tasking

Many of our students have active family lives or demanding work commitments, but they still put 100% into their study.

Inquisitive

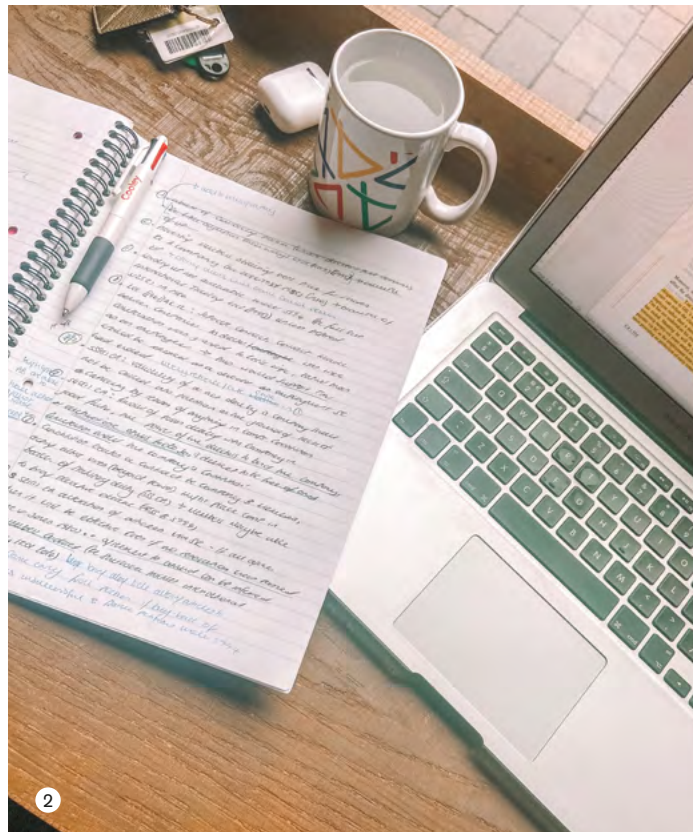
Curiosity is in our students' DNA. They're willing to break intellectual boundaries and together extend the frontiers of knowledge.

Idea generators

Brave enough to have ideas and generous enough to share them; that's our students in a nutshell.

STUDENT STORIES

Meet some of our inspirational global students – working towards achieving their aspirations through their studies.



“Essex Online has hugely improved my confidence and outlook, allowing me to view my dyslexia as a benefit – something that I hadn’t experienced in earlier parts of my education.”

Sophie’s story

London, United Kingdom

LLB (Hons) Law Student

Legal personal assistant and aspiring solicitor

When I am not studying or finding time to have fun with my friends, I work as a legal personal assistant within banking, finance and corporate practice at a well-regarded international law firm.

I struggle with dyslexia which impacts my processing and retention of information. I have felt that there is a stigma associated with the condition that I am not considered academically “bright”. At school I was told that I would “never be bright enough” to go university let alone study law. This affected how I viewed myself and I was disheartened, as law had always been a keen interest of mine.

Consequently, this led me to rethink what I would do beyond school, and I attended a secretarial college. Though, I knew that I wanted to do more to enhance my career, and a degree was the natural next step. This led me to discover Essex Online – as I searched for an option fit with my learning style and allow me to continue working full-time but also obtain a degree from a reputable university.

The application process was easy and seamless. After submitting my personal statement and supporting documents, an Admissions Adviser contacted me to arrange an informal call. We discussed my application, and they answered my questions. After that, I had my place confirmed. I was ecstatic, to say the least, to have the opportunity to gain a degree from a highly regarded and recognised institution in a subject that I may not have been accepted elsewhere as I don’t fit within the traditional “academic” profile.

The academic support provided by the Essex Online has hugely improved my confidence and outlook, allowing me to view my dyslexia as a benefit – something that I hadn’t experienced in earlier parts of my education. They are open-minded and incredibly flexible in their approach to dealing with everyone, with a disability or not, on an individual basis.

Essex Online has enabled me to study whenever it suits me, for example, on my commute to work. This is not to say that online study is easy as it certainly comes with its challenges, particularly balancing work-life and social activities. Sometimes sacrifices need to be made, but when it is for personal interest, this is not as daunting in practice and juggling work, studies and life becomes easier.

Upon completing my LLB, I plan to undertake postgraduate study and begin applying for training contracts and qualify as a solicitor.

Curious to see what a week in the life is like for Sophie?

WATCH SOPHIE’S VLOG

Jitender's story

From Hansi, India

Living in Doha, Qatar

BA (Hons) Business and Management student

Family man and pproject manager planning to undertake a Masters

I had completed a diploma in civil engineering in India. I then worked in different positions in the construction industry since 2009; and I moved to Qatar with my family in 2014, where I've worked for multinational construction companies as a project handover manager.

I want to be a great project manager. And to do so, I believe I should have a Masters level of knowledge in project management.

There were many factors which affected my decision to study online. But mainly I can't afford to quit my full-time job, as it is the only source of income for my family; to study on campus I would likely have to do that, and then I wouldn't be able to pay the tuition fees.

During my course search, I considered many universities from different regions around the world. However, I really wanted to pursue my further studies with a British institution because of the reputation of UK universities and the number of respectable online options.

Ultimately, I picked the University of Essex Online because of the guidance I received from the Admissions team. My assigned Admissions Adviser made sure I was 100% certain about committing to study with Essex. This made me feel like they cared about me making the right choice. Also I liked that Essex Online would allow me to study 100% online and graduate at Essex's Colchester campus with the same certificate as campus students.

I chose to study the BA (Hons) Business and Management as I wanted an academic foundation as a stepping stone for the MSc Project Management. Since I started studying with Essex Online, I learn something new and interesting on daily basis. The virtual learning platform is awesome – it's really good! All the study materials are available there and it can be accessed using mobile, tablet or the computer or laptop. It's like an application where I can do almost all activities required to complete my studies online.

Furthermore, the Student Advisers and tutors have made me feel part of the community and they've been understanding of special circumstances. For instance, my daughter was born when positive Covid-19 cases were at its peak in Qatar, and I had to apply for an extension for my end of module project. Thanks to the support I received during this time I ended up achieving distinction on my assignment.

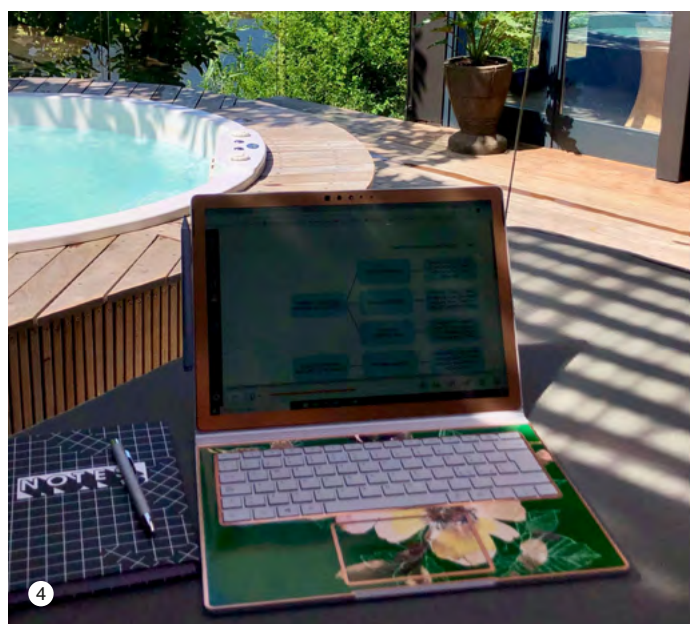
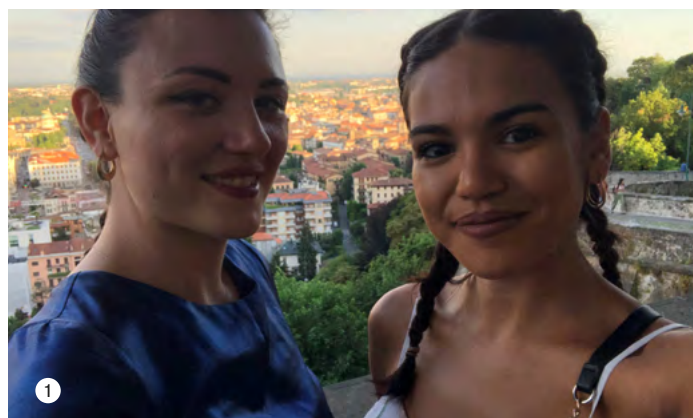


Curious to see what a day in the life is like for Jitender?

WATCH JITENDER'S VLOG



"I liked that Essex Online would allow me to study 100% online and graduate at Essex's Colchester campus with the same certificate as campus students."



“University of Essex Online also provides me with an authentic university experience thanks to activities like the Journal Club and the Student Council.”

Hillary's story

**From Gazzenda, Italy
Living in Cape Town, South Africa
BSc (Hons) Psychology student
Writer with wanderlust**

After earning my high school diploma, I was unsure whether to pursue higher education or to start working. At the time, the reputation of online degrees was still undervalued, so I didn't consider e-learning as a choice and focused on traditional institutions only.

I ended up choosing to travel for work rather than going to university. I was 21 years old when I left my home country and believed that I was already too old to enrol at university – the power of public opinion! However, my mind would not stop teasing the idea of getting a degree. I often found myself exploring university courses available in the area I was in at the time, then putting them aside and concentrating on choosing my next destination.

For four years, I continued to postpone the start of my academic journey. When I finally grew tired of spinning around the world like a pinwheel – and I also found myself in a city that I liked – that was when I started thinking about university more seriously. It was clear to me that considering an online degree would be the best option, as it would allow me the flexibility to move around without worrying about interrupting my studies.

Essex Online ended up being my choice mainly because of the Admissions process. My assigned Admissions Adviser provided me with clear and prompt answers, and they were willing to help with any doubts I had. This gave me a positive impression of the university which did not change once I started studying my course.

As a student, I have a Student Support team designated to my department, who are always on-hand to support me through my studies. Essex Online also provides an authentic university experience thanks to activities like the Journal Club and the Student Council, while allowing me to organise my schedule and study at my own pace. I have no regrets picking Essex Online!



Keen to find out more about how Hillary chose her online degree?

WATCH HILLARY'S INTERVIEW

Minkateko's story

Pretoria, South Africa
BA (Hons) Business and Management Student
Charity entrepreneur and up-and-coming musician with business ambitions

I just missed out on the grades I needed to study a business degree in my hometown. So I applied to study the CertHE Business and Management with Essex Online through the open entry route; as it doesn't require any prior academic qualifications or work experience, and upon completion, it would enable me to progress studying the Bachelors degree.

I had a few concerns when considering whether to study with Essex Online. Some of them were raised by my parents as they were sceptical about the university's offering. They initially thought it might be a scam! Because it seemed a little bit too good to be true: studying 100% online with no requirement to sit exams. My parents were highly doubtful about this and thought online courses would be easier and of a lesser quality than on campus courses.

When I finally decided to apply, my parents and I took it upon ourselves to find out as much information as we could about the university before I enrolled. I was assigned a personal Admissions Adviser who answered all our apprehensions. He explained that many of the courses at Essex Online are research-based, so I would not have to sit exams, but my knowledge would still be tested through written assignments such as, reports, journal entries and discussion forum posts.

My Admissions Adviser also confirmed that Essex Online's qualifications are awarded by the University of Essex. And reassured us of the institution's high standards including: its gold rating in the Teaching Excellence Framework; it had undergone independent monitoring visits by the Quality Assurance Agency for Higher Education; and it achieved the highest overall student satisfaction results for an online-education provider in the National Student Survey. This helped relieve my parent's and my own anxieties about the course quality and recognition.

Due to health issues, I studied my final year of high school online, so I had some experience of online learning. Though I was worried about teaching myself the syllabus at university level, because I had heard from other people that "you're on your own at university". But my fears were dispelled from the moment I started my course; my module tutor hosted bi-weekly Q&A sessions to explain the coursework requirements and offered one-to-one assistance to anyone struggling with coursework.

I also thought since my classmates would be studying online at their own pace that I would have no interaction with them. However, I have opportunities to interact with my peers via the student forums – and there are Facebook groups where we connect with each other. I mainly interact with my classmates through the discussion forum assessments where we discuss a given coursework, case study or topic.

I've successfully completed my CertHE and I'm now studying the BA programme. I'm planning to pursue a Masters degree in a few years. My future plan is to create businesses and employment in the tourism, food, entertainment and retail industries.



Want to see what a week in the life is like for Minkateko?
WATCH MINKATEKO'S VLOG



"I had heard from other people that "you're on your own at university". But my fears were dispelled from the moment I started my course; my module tutor hosted bi-weekly Q&A sessions to explain the coursework requirements and offered one-to-one assistance to anyone struggling."

GET THE STUDENT PERSPECTIVE

Our global Student Ambassador team are available through a number of ways to provide you with an authentic insight into what it's like to study with us.

Get answers to your questions

Visit our website to find the Unibuddy chat platform, that allows you to send messages to our students and ask them any questions you may have about studying online. Our Student Ambassadors also write blogs on their experience and tips they'd like to share.

CHAT TO A STUDENT

Book your place at a virtual event

Throughout the year we deliver a variety of subject-specific webinars, virtual open days and live Q&A events. If they're available, our Student Ambassadors attend these events to provide their perspective as students.


JOIN AN UPCOMING EVENT



Stay in the know


When they have some time in their busy schedules, our Student Ambassadors write blogs and film vlogs to offer you a sneak peek into their experience studying online.

If you don't already follow our social media channels, do so now, so you don't miss out on the latest updates from our students!

 UniEssexOnline

 uniessexonline

 UniEssexOnline

 UniEssexOnline

 University of Essex Online

 #EssexOnline

THE ONLINE STUDY EXPERIENCE



Interactive virtual learning platform

Designed specifically for online learning, our courses are delivered exclusively through our virtual learning environment (VLE). This means wherever you are, whatever the time, you can login and get some studying done.

Rather than lengthy pre-recorded lectures and trips to examination centres, our cutting-edge course content is designed with the modern student in mind.

Lecturecasts

Course content is delivered via lecturecasts, offering you a contemporary and accessible way to interact with multimedia content and check your understanding via engaging and interactive activities.

Discussion forums

Throughout your study, you'll get to know your course matter, share your experiences and learn from fellow students through regular participation in discussion forums.

Live sessions

Our tutors host regular live sessions throughout your modules giving you an opportunity to ask questions and discuss course materials in greater depth.

Online resources

You will get access to all core textbooks completely free of charge. In addition to the Essex eLibrary which hosts a range of academic texts and journals allowing you to read around your subject and improve your understanding.

Assessment

You'll be assessed in a variety of different ways throughout your studies, enabling you to demonstrate your diverse skillset and subject understanding. Many of our courses are assessed exclusively through written assignments and even if exams are involved these can be completed from the comfort of your home.

“The platform is easy to understand, and the guidance is second to none.”

**Adam Newman, UK, LLB (Hons)
Law with Business**

STUDENT SUPPORT

Although you'll be studying independently, you won't be alone. There are a range of student services available including academic, pastoral and technical support. You will also have plenty of opportunities to collaborate, discuss and debate with your fellow classmates and tutors.

Admissions Advisers

As soon as you enquire about or apply for one of our courses, you'll be assigned an Admissions Adviser. They will steer you through the entire application process, answering any questions and assisting you with the practicalities.

Student Advisers

Once you've been accepted onto a course you will be introduced to our Student Support team and a Student Adviser will welcome you on your first day. Our Student Advisers will be with you for your entire study journey and will be on hand to mentor and guide you throughout your course.

Academic support

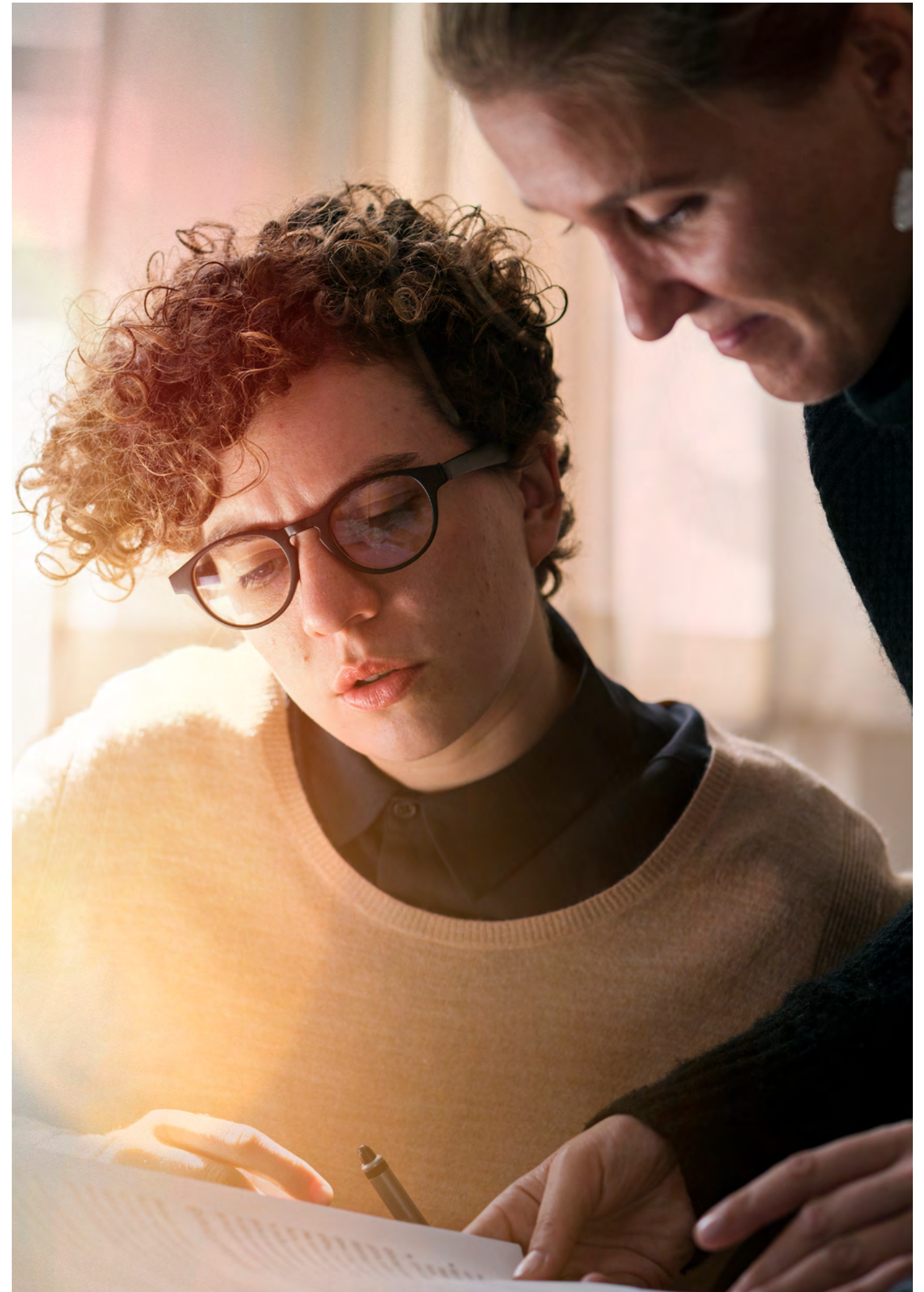
Our friendly and knowledgeable tutors will be on hand for any academic queries and guidance. As well as regular virtual office hours and frequent live sessions, they'll be marking your work and providing thorough feedback along the way.

Disability support

If there's anything our staff can do to make our courses more accessible for you, just ask! We recommend that you let us know about any physical or learning disabilities during the application process. This is so we can assess your needs and make any necessary arrangements to meet your study requirements.

“My Student Adviser made herself available every time I had a question or needed help with challenging situations. She promised to call me as soon as my degree mark became available and she did. I loved the personal touch of receiving a phone call to let me know.”

Mauro Orru, UK, LLB (Hons) Law



ESSEX ONLINE PERKS



“My programme fits perfectly with my lifestyle, as it provides the flexibility that I need to pursue my studies vigorously and to keep up with my ever-changing environment.”

**Breshna Francis, Qatar,
LLB (Hons) Law**

Flexible study approach

Whether you have a full-time job, a busy family life, or an action-packed travel schedule, our online and part-time courses utilise the latest technology to help you fit studying around your busy lifestyle.

Affordable education

Student loans are available to eligible students based in England. For those self-funding their studies, we offer flexible monthly payment plans, plus a range of discounts and scholarships.

Quick feedback turnaround

Throughout the course we'll provide feedback on submitted assignments within 7 days, so you'll always have an up-to-date perspective on how you're doing.

Small class sizes

To make sure you get the best possible level of support from our academic staff, we cap class sizes at 20.

Free trial period

If for some reason you don't love online study or your course after 21 days, you can receive a full refund (**Terms and Conditions apply**).

DEVELOPING YOUR EMPLOYABILITY

Enhance your career prospects while working full-time

Our degrees and short courses are designed with working professionals in mind: not only are they flexible enough to fit around your existing commitments, but right from the start you can apply your new expertise to your day job.

Gain subject-specific knowledge

Whatever your field, our specialist courses will allow you to gain an insight into the subject at hand. Our tutors have extensive work experience and research practice in the field they teach, meaning your knowledge is not only up-to-date but honed by years of on-the-job experience and academic expertise.

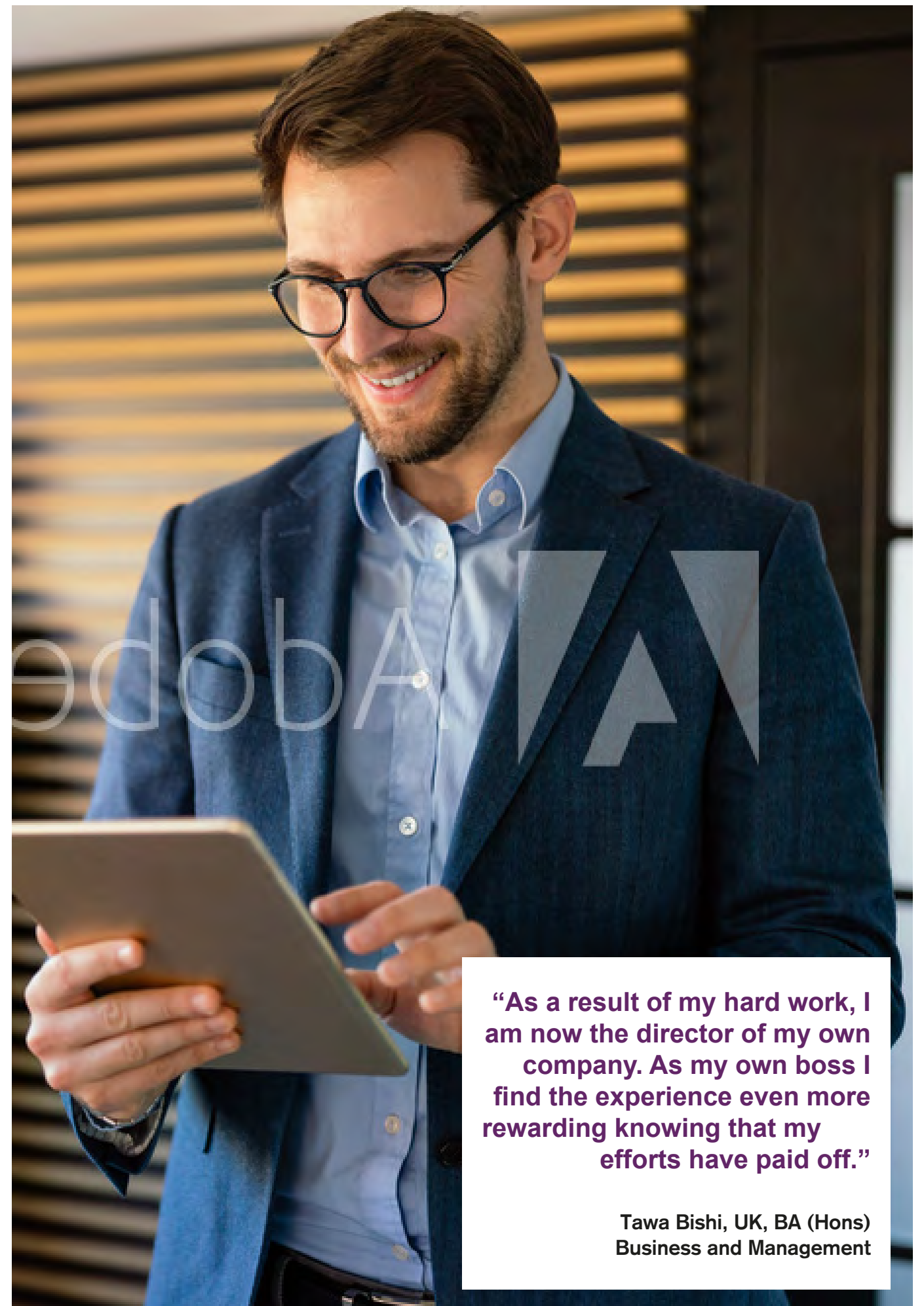
Many of our courses feature optional modules that allow you to tailor your learning to your specific interests and career objectives.

Develop transferable skills

Even if your career aspirations are not directly related to one of our subjects, you can still benefit from the practical skills developed on your course. To achieve a higher education qualification, students must be disciplined, manage their time well and communicate articulately and coherently.

By collaborating with your classmates, you will develop your teamwork skills and you'll also have the opportunity to improve your critical evaluation through forums and a variety of assessments, discussing the course material.

Finally, all of our Bachelors degrees culminate in an independent project, report or dissertation. This is the perfect opportunity to enhance your research, analysis and presentation skills.



“As a result of my hard work, I am now the director of my own company. As my own boss I find the experience even more rewarding knowing that my efforts have paid off.”

**Tawa Bishi, UK, BA (Hons)
Business and Management**

GRADUATION



**“I’m really basking in the
glory of accomplishing
my goal.”**

**Chantel Burrell-Harris, UK,
BA (Hons) Business and Management**

Upon successful completion of your course, you will be invited to attend a graduation ceremony at the University of Essex Colchester Campus.

Celebrate your achievement

Completing your Bachelors degree is a very special milestone in your life. Graduation is an opportunity to celebrate your hard work and dedication while also recognising and acknowledging the support received from family, friends and classmates.

Meet your tutors and Student Advisers

For our graduates, this is likely to be the first time they meet in person the staff members who have been integral to their study.

Explore Essex’s campus

The beautiful University of Essex Colchester Campus is home to 16 academic departments and schools and more than 13,000 students. Graduation takes place in July.

Receive your certificate

You will receive the same certificate as students who studied on campus – the mode of study is only mentioned on your academic transcript with your final grades.

GET AN INSIGHT

VIRTUAL EVENTS

These are one of the best ways to find out if Essex Online is the right place for you. You have the chance to ask questions about your subject, the online learning experience and the careers opportunities your studies could open up.

Our 2021-22 events

- Virtual open days
- Study online webinars
- Programme Q&As
- Live interviews

To see our events schedule and book your place, visit [our events hub](#).

TASTER COURSES

Unsure whether online learning will suit you? Try one of our free lecturecasts to give you a taster of how you'll learn with us – an interactive multimedia learning experience.

T_C Taster course available

If you see this icon on a page, it means we have a taster lecturecast for this course.

For the full list, check out [our taster courses page](#).

OUR COURSES

Whatever your passion, explore it at Essex Online. Our programmes span a range of subjects. Which will you choose?

Business, law, health or psychology – or some combination thereof? Choose our full Bachelors degrees to fully immerse yourself in the subject, or a shorter CertHE programme to give yourself a solid grounding in the field.

University of Essex Online programmes are delivered by Kaplan Open Learning, an online learning provider with over a decade of experience. Each of our programmes has been designed for online delivery in mind from the very beginning and are taught by industry leaders and subject matter experts.





Business is an ever-changing field and one of the most versatile subjects to study. Graduates have a wide variety of career options and the ability to work in any industry.

Our courses are designed by experts to provide you with key professional and technical knowledge across a range of business disciplines. In addition, our teaching style enables you to develop important practical skills such as communication, decision-making and problem-solving.

You can choose to specialise in either management or marketing, or keep your options open by starting on our shorter CertHE course which allows progression onto either of the full Bachelors degrees.

BUSINESS COURSES

Course indicative duration	
BA (Hons) Business and Management	4 years
BA (Hons) Business and Management (Top-up)	16 months
CertHE Business and Management	16 months
BA (Hons) Business and Marketing	4 years

Our combined courses

Course indicative duration	
BSc (Hons) Business Psychology	4 years
CertHE Business Psychology	16 months
LLB (Hons) Law with Business	4 years
CertHE Law with Business	16 months

Check our [combined courses section](#) for more information.

Why we're great

- As one of the longest-running providers of online business degrees, we put over a decade of experience to good use in designing our courses.
- Our certificates are awarded by Essex Business School, part of the University of Essex, a world-renowned business school ranked in the UK's top 25 for research quality (The Times and The Sunday Times Good University Guide 2019).
- Our business courses are designed with online delivery in mind – not only can you complete them around existing work commitments, you can also use course material in your job from day one.

“The exchange of ideas especially in an online setting can really bring new perspectives and ways of thinking. At the moment I’m trying to put my learning into use in my current role in human resources.”

Anna Kryszak, UK, BA (Hons) Business and Management

BA (Hons) BUSINESS AND MANAGEMENT



Examine real-world companies and develop your managerial toolkit with this practical and comprehensive business degree. You will improve your project management, leadership and financial knowledge while sharing ideas with fellow students from around the world.

Syllabus

The BA (Hons) Business and Management is made up of the following modules and, upon completion, is equal to a total of 360 credits.

Level 4 modules

- Fundamentals of Effective Learning (15 credits)*
- Business and Management Skills (15 credits)*
- Fundamentals of Marketing (15 credits)*
- Human Resource Management (15 credits)*
- Introduction to Finance (15 credits)*
- Business Environment (15 credits)*
- Core Skills and Employability (30 credits)*

Level 5 modules

- Business Planning (15 credits)*
- Marketing and Sales Management (15 credits)*
- Operations Management (15 credits)*
- Leadership and Managing Teams (15 credits)*
- Financial Decision Making (15 credits)*
- Project Management (15 credits)*
- Business Investigation (30 credits)*

Level 6 modules

- Global Business Environment (15 credits)
- Business Strategy (15 credits)*
- Strategic Human Resource Management (15 credits)
- Business Law (15 credits)
- International Marketing Strategy (15 credits)
- Business Finance (15 credits)
- Advanced Business Project (30 credits)*

*Core module (Must be passed in order to achieve the award)

Course overview

Tuition fee 2021-22: £18,500 ([learn more](#))
Indicative duration: 4 years
Qualification: BA (Hons)
Funding options: [See here](#) for more information

Start dates

2021: August, September, October, November
2022: January, February, March, April, May, July

Entry requirements

For the academic entry route you must have the following qualifications as a minimum:

- two A-levels or equivalent

For the work experience entry route you must meet the following criteria:

- GCSE Maths and English at grade C or above, or equivalent
- three years' relevant work experience

If English is not your first language, your English ability should be equivalent to an IELTS score of 6.0. If you do not hold an IELTS or equivalent qualification, we will ask you to pass our free online English test.



READY TO APPLY?

Complete the online application form and an Admissions Adviser will be in touch to assist you in the enrolment process.

BA (Hons) BUSINESS AND MANAGEMENT (TOP-UP)



Ideal for those who hold a Foundation degree or equivalent in a business-related field, this course not only allows you to complete your Bachelors, it also explores the latest updates and innovations in the business world.

Syllabus

The BA (Hons) Business and Management (Top-up) is made up of the following modules and, upon completion, is equal to a total of 120 credits.

Level 6 modules

- Global Business Environment (15 credits)
- Business Strategy (15 credits)*
- Strategic Human Resource Management (15 credits)
- Business Law (15 credits)
- International Marketing Strategy (15 credits)
- Business Finance (15 credits)
- Advanced Business Project (30 credits)*

*Core module (must be passed in order to achieve the award)

Course overview

Tuition fee 2021-22: £6,167 ([learn more](#))

Indicative duration: 16 months

Qualification: BA (Hons)

Funding options: [See here](#) for more information

Start dates

2021: August, October

2022: February, April, June

Entry requirements

Our top-up courses are designed for those with some prior university level education. As such, you must have completed one of the following within the last five years:

- a relevant Foundation degree from University of Essex Online or another recognised institution
- two years of a relevant BA (Hons) degree from a recognised institution
- a relevant Higher National Diploma (HND) from a recognised institution

If English is not your first language, your English ability should be equivalent to an IELTS score of 6.0. If you do not hold an IELTS or equivalent qualification, we will ask you to pass our free online English test.

READY TO APPLY?

Complete the online application form and an Admissions Adviser will be in touch to assist you in the enrolment process.



This short course will give you a solid grounding in essential business tools and techniques in areas such as marketing, HR and finance. Whether you hope to progress onto a full degree or to use this short course to step up your career in business, the range of skills and knowledge you will develop, which are beneficial in almost any field.

Syllabus

The CertHE Business and Management is made up of the following modules and, upon completion, is equal to a total of 120 credits.

Level 4 modules

- Fundamentals of Effective Learning (15 credits)*
- Business and Management Skills (15 credits)*
- Fundamentals of Marketing (15 credits)*
- Human Resource Management (15 credits)*
- Business Environment (15 credits)*
- Introduction to Finance (15 credits)*
- Core Skills and Employability (30 credits)*

*Core module (must be passed in order to achieve the award)
Upon completion of your CertHE Business and Management we offer the opportunity for you to progress to study for a Bachelors degree (360 credits).

Course overview

Tuition fee 2021-22: £6,167 ([learn more](#))
Indicative duration: 16 months
Qualification: CertHE
Funding options: [See here](#) for more information

Start dates

2021: August, September, October, November
2022: January, February, March, April, May, July

Entry requirements

We believe that education should be accessible for everyone. That's why we offer an open entry route – meaning you don't need any prior academic or work experience in order to start studying with us.

If English is not your first language, your English ability should be equivalent to an IELTS score of 6.0. If you do not hold an IELTS or equivalent qualification, we will ask you to pass our free online English test. You will need to pass your first assignment set within the first three weeks of the course in order to continue with your studies.

READY TO APPLY?

[Complete the online application form](#)
and an Admissions Adviser will be in touch to assist you in the enrolment process.

BA (Hons) BUSINESS AND MARKETING



Improve your ability to think creatively and apply data learnings to your marketing activities with our wide-ranging business and marketing degree. You will discuss key marketing trends with your peers while improving your business know-how as a whole.

Syllabus

The BA (Hons) Business and Marketing is made up of the following modules and, upon completion, is equal to a total of 360 credits.

Level 4 modules

- Fundamentals of Effective Learning (15 credits)*
- Business and Management Skills (15 credits)*
- Fundamentals of Marketing (15 credits)*
- Human Resource Management (15 credits)*
- Introduction to Finance (15 credits)*
- Business Environment (15 credits)*
- Core Skills and Employability (30 credits)*

Level 5 modules

- Business Planning (15 credits)*
- Marketing and Sales Management (15 credits)*
- Operations Management (15 credits)*
- Consumer Behaviour (15 credits)*
- Marketing Communications (15 credits)*
- Project Management (15 credits)*
- Business Investigation (30 credits)*

Level 6 modules

- Global Business Environment (15 credits)*
- Business Strategy (15 credits)*
- e-Business and Marketing (15 credits)
- Marketing Research (15 credits)*
- International Marketing Strategy (15 credits)*
- Services Marketing (15 credits)
- Advanced Business Project (30 credits)*

*Core module (must be passed in order to achieve the award)

Course overview

Tuition fee 2021-22: £18,500 ([learn more](#))

Indicative duration: 4 years

Qualification: BA (Hons)

Funding options: [See here](#) for more information

Start dates

2021: August, September, October, November

2022: January, February, March, April, May, July

Entry requirements

For the academic entry route you must have the following qualifications as a minimum:

- two A-levels or equivalent

For the work experience entry route you must meet the following criteria:

- GCSE Maths and English at grade C or above, or equivalent
- three years' relevant work experience

If English is not your first language, your English ability should be equivalent to an IELTS score of 6.0. If you do not hold an IELTS or equivalent qualification, we will ask you to pass our free online English test.

READY TO APPLY?

[Complete the online application form](#) and an Admissions Adviser will be in touch to assist you in the enrolment process.



Studying law at Essex Online isn't like any other place. We're used to doing things a bit differently – we're the only institution that offers 100% online and part-time law courses, with no requirement to travel to assessment centres or complete timed examinations.

We deliver qualifying law degrees that are accredited by the Solicitors Regulation Authority. They are a great first step to progress to the professional training stage to qualify as a legal professional. You can also combine your legal study with our other complementary subjects: business, criminology or psychology.

LAW COURSES

Course indicative duration	
LLB (Hons) Law	4 years
CertHE Law	16 months

Our combined courses

Course indicative duration	
LLB (Hons) Law with Business	4 years
CertHE Law with Business	16 months
LLB (Hons) Law with Criminology	4 years
CertHE Law with Criminology	16 months
LLB (Hons) Law with Psychology	4 years
CertHE Law with Psychology	16 months

Check our [combined courses section](#) for more information.

Why we're great

- We are employability focused, equipping you with skills required for careers in the legal sector, and transferable skills which are highly valued by employers in other sectors.
- Our modules are delivered by experienced academics and legal practitioners who will help you to develop the legal knowledge and skills required for legal practice.
- We have a variety of assessment methods, including written assignments, discussion forums, reflective journal entries and exams. Exams are only on optional modules; if you don't suit them, you can choose another option.

“I think the course was sufficiently challenging which is what you expect from this kind of course. The most enjoyable part was learning about different areas of law in different countries with my fellow students.”

Shaun Barbour, USA, LLB (Hons) Law

LLB (Hons) LAW

◊ If you enrol onto this programme by September 2021, you can choose the Legal Practice Course (LPC) route rather than the SQE route to qualify as a solicitor. This programme also meets Bar Standards Board's (BSB) academic component of training to become a barrister.

Tc



This academically rigorous LLB (Hons) Law[◊] is Solicitors Qualifying Examination (SQE) focused. You will study the seven foundations of legal knowledge and undertake skills-focused modules that you will be assessed on during the SQE. On completion of your degree, you will be ready to pursue legal training and equipped to thrive in a wide range of careers in related sectors.

Syllabus

The LLB (Hons) Law is made up of the following modules and, upon completion, is equal to a total of 360 credits.

Level 4 modules

- Legal Skills and Context (30 credits)*
- Criminal Law (30 credits)†
- Public Law (30 credits)†
- Contract Law (30 credits)†

Level 5 modules

- Law of Tort (30 credits)†
- Land Law (30 credits)†
- European Union Law (15 credits)†
- Optional modules equal to 45 credits:
 - Company Law (30 credits)§
 - Legal Professions and Services (15 credits)§
 - Business Law: Finance and Tax (15 credits)§
 - Introduction to Public International Law (15 credits)

Level 6 modules

- Equity and Trusts (15 credits)†
- Wills and the Administration of Estates (15 credits)†§
- Three optional modules:
 - Final Year Research Project (30 credits)
 - Criminal and Civil Litigation (30 credits)§
 - Commercial Law (30 credits)§
 - Family Law (30 credits)
 - Law of Evidence (30 credits)§
 - International Trade Law (30 credits)
 - Employment Law (30 credits)
 - Medical Law (30 credits)

*Core module (must be passed in order to achieve the award) † These modules are compulsory and must be passed in order to achieve a qualifying law degree. § These modules optional and SQE-focused.

Course overview

Tuition fee 2021-22: £18,500 ([learn more](#))

Indicative duration: 4 years

Qualification: LLB (Hons)

Funding options: [See here](#) for more information

Start dates

2021: August, September, October, November

2022: January, February, March, April, May, July

Entry requirements

For the academic entry route you must have the following qualifications as a minimum:

- three A-levels or equivalent

For the work experience entry route you must meet the following criteria:

- GCSE Maths and English at grade C or above, or equivalent
- three years' relevant work experience

If English is not your first language, your English ability should be equivalent to an IELTS score of 6.0. If you do not hold an IELTS or equivalent qualification, we will ask you to pass our free online English test.

READY TO APPLY?

Complete the online application form and an Admissions Adviser will be in touch to assist you in the enrolment process.



This short course is designed to introduce you to the English legal system. You will gain essential legal knowledge that is beneficial to roles in a wide range of sectors. You can also use this course as a stepping stone onto our SQE focused LLB (Hons) Law.

Syllabus

The CertHE Law is made up of the following modules and, upon completion, is equal to a total of 120 credits.

Level 4 modules

- Legal Skills and Context (30 credits)*
- Criminal Law (30 credits)
- Public Law (30 credits)
- Contract Law (30 credits)

*Core module (must be passed in order to achieve the award)

Upon completion of your CertHE Law we offer the opportunity for you to progress to study for a Bachelors degree (360 credits).

Course overview

Tuition fee 2021-22: £6,167 ([learn more](#))

Indicative duration: 16 months

Qualification: CertHE

Funding options: [See here](#) for more information

Start dates

2021: August, September, October, November

2022: January, February, March, April, May, July

Entry requirements

We believe that education should be accessible for everyone. That's why we offer an open entry route – meaning you don't need any prior academic or work experience in order to start studying with us.

If English is not your first language, your English ability should be equivalent to an IELTS score of 6.0. If you do not hold an IELTS or equivalent qualification, we will ask you to pass our free online English test. You will need to pass your first assignment set within the first three weeks of the course in order to continue with your studies.

READY TO APPLY?

[Complete the online application form](#) and an Admissions Adviser will be in touch to assist you in the enrolment process.



Healthcare is a broad discipline that affects everyone across the world. We'll provide you with an understanding of healthcare challenges and the management know-how to tackle them.

Our BSc (Hons) Healthcare Management has been designed by subject experts to provide you with an in-depth knowledge of healthcare issues and practices globally. You will learn about management approaches within a healthcare context and develop transferable skills that are valued in a variety of professional roles.

We also offer the option to study a shorter CertHE Health Management, which allows progression on the full Bachelors degree.

HEALTH COURSES

Course indicative duration	
BSc (Hons) Healthcare Management	4 years
CertHE Healthcare Management	16 months

- Why we're great**
- The study materials will ensure you gain an understanding of the challenges faced by healthcare managers and equip you with the leadership skills to progress in your career.
 - Our online health courses are created by subject experts, giving you in-depth knowledge and understanding of leadership and managerial approaches to team and organisational development across a variety of healthcare contexts.
 - Our courses are delivered 100% online and part time, enabling you to fit your studies around personal and professional commitments and achieve a new qualification without the need for a career break.

“Working in the pharmaceutical industry requires a lot of travel and time away from home. Online study fits with my busy lifestyle and provides me with the flexibility to achieve my dream of getting a degree in healthcare management.”

Tanya Van Wijk, UK, BSc (Hons) Healthcare Management

BSc (Hons) HEALTHCARE MANAGEMENT



Explore the fascinating fields of health and business through this unique course. You will develop a thorough understanding of the different challenges facing healthcare professionals, while perfecting the management skills needed to progress in your career.

Syllabus

The BSc (Hons) Healthcare Management is made up of the following modules and, upon completion, is equal to a total of 360 credits.

Level 4 modules

- Introduction to Healthcare Management (15 credits)
- Global Health (15 credits)
- Business and Management Skills (15 credits)
- Introduction to Finance (15 credits)
- Human Resource Management (15 credits)
- Health, Society and Public Policy (15 credits)
- Personal and Professional Development 1 (30 credits)

Level 5 modules

- Public Health (15 credits)
- Financial Decision Making (15 credits)
- Leadership and Managing Teams (15 credits)
- Introduction to Healthcare Informatics (15 credits)
- Project Management (15 credits)
- Introduction to Health Economics (15 credits)
- Personal and Professional Development 2 (30 credits)

Level 6 modules

- Research Methods in Healthcare (15 credits)
- Comparative Health Systems (15 credits)
- Business Strategy (15 credits)
- Health Innovation (15 credits)
- Occupational Psychology (15 credits)
- Contemporary Issues in Practice (15 credits)
- Healthcare Management Dissertation (30 credits)*

*Core module (must be passed in order to achieve the award)

Course overview

Tuition fee 2021-22: £18,500 ([learn more](#))

Indicative duration: 4 years

Qualification: BSc (Hons)

Funding options: [See here](#) for more information

Start dates

2021: August, October

2022: January, March, May

Entry requirements

For the academic entry route you must have the following qualifications as a minimum:

- three A-levels or equivalent

For the work experience entry route you must meet the following criteria:

- GCSE Maths and English at grade C or above, or equivalent
- three years' relevant work experience

If English is not your first language, your English ability should be equivalent to an IELTS score of 6.0. If you do not hold an IELTS or equivalent qualification, we will ask you to pass our free online English test.

READY TO APPLY?

[Complete the online application form](#) and an Admissions Adviser will be in touch to assist you in the enrolment process.



This short online course will give you an in-depth introduction to leadership and management approaches in healthcare. You will develop a number of transferable skills to benefit you in your current and future role.

Syllabus

The CertHE Healthcare Management is made up of the following modules and, upon completion, is equal to a total of 120 credits.

Level 4 modules

- Introduction to Healthcare Management (15 credits)
- Global Health (15 credits)
- Business and Management Skills (15 credits)
- Introduction to Finance (15 credits)
- Human Resource Management (15 credits)
- Health, Society and Public Policy (15 credits)
- Personal and Professional Development 1 (30 credits)

Upon completion of your CertHE Healthcare Management, we offer the opportunity for you to progress on to study for a full Bachelors degree (360 credits).

Course overview

Tuition fee 2021-22: £6,167 ([learn more](#))

Indicative duration: 16 months

Qualification: CertHE

Funding options: [See here](#) for more information

Start dates

2021: August, October

2022: January, March, May

Entry requirements

We believe that education should be accessible for everyone. That's why we offer an open entry route – meaning you don't need any prior academic or work experience in order to start studying with us.

If English is not your first language, your English ability should be equivalent to an IELTS score of 6.0. If you do not hold an IELTS or equivalent qualification, we will ask you to pass our free online English test. You will need to pass your first assignment set within the first three weeks of the course in order to continue with your studies..

READY TO APPLY?

Complete the online application form and an Admissions Adviser will be in touch to assist you in the enrolment process.



Psychology is a thought-provoking subject involving the study of the mind and behaviour, which can help you to understand your place in the world.

Designed and run by experts in the field, our courses enable you to develop core transferable skills and knowledge that will enhance your career development and improve your employability within psychology and related fields.

You can study our BPS accredited BSc Psychology or explore a complementary area of interest with our combined degrees in business psychology or criminal psychology. You also have the option to study shorter CertHE courses, which are recognised standalone qualifications and allows progression onto its respective Bachelors Degree.

PSYCHOLOGY COURSES

Course indicative duration	
BSc (Hons) Psychology	4 years
CertHE Psychology	16 months

Our combined courses

Course indicative duration	
BSc (Hons) Business Psychology	4 years
CertHE Business Psychology	16 months
BSc (Hons) Criminal Psychology	4 years
CertHE Criminal Psychology	16 months
LLB (Hons) Law with Psychology	4 years
CertHE Law with Psychology	16 months

Check our [combined courses section](#) for more information.

Why we're great

- Our courses are 100% assignment based with every module having engagement activities enabling you to collaborate and interact with other students and tutors. It's a great way to develop your communication skills.
- You will be supported by our dedicated, motivated and passionate tutors who are all specialists in their fields. They will guide you through each module with their expertise.
- We help you to develop your employability and transferable skills, including critical thinking, reasoning, problem solving, communication, research skills such as interviewing, understanding of ethics, numeracy and many more.

“I have always been fascinated by psychology. The course isn’t easy and you need to be focused and make time to read the literature and complete your modules but it has ignited a passion for learning that I had forgotten I had.”

Michelle Franklin, UK, BSc (Hons) Psychology

BSc (Hons) PSYCHOLOGY



This programme is accredited by the British Psychological Society (BPS), satisfying the Graduate Basis for Chartered Membership Curriculum. You will learn about the scientific and theoretical underpinnings of psychology, different research methods and several specialised areas.

Syllabus

The BSc (Hons) Psychology is made up of the following modules and, upon completion, is equal to a total of 360 credits.

Level 4 modules

- Fundamentals of Effective Learning in Psychology (15 credits)*
- Introduction to Social Psychology (15 credits)*
- Personality and Intelligence (15 credits)*
- Introduction to Cognitive Psychology (15 credits)*
- The Psychology of Attitudes (15 credits)*
- Mental Health, Stress and Well-being (15 credits)*
- Introduction to Research Methods (30 credits)*

Level 5 modules

- Biological Psychology (15 credits)*
- Advanced Cognitive Psychology (15 credits)*
- Individual Differences, Emotions and Behaviour (15 credits)*
- Reasoning and Decision-Making (15 credits)*
- Quantitative Psychology (15 credits)*
- Psychological Development through the Lifespan (15 credits)*
- One optional module:
 - Forensic Psychology (15 credits)
 - Health Psychology (15 credits)
 - Educational Psychology (15 credits)
- Qualitative Research Methods (15 credits)*

Level 6 modules

- Critical Social Psychology (15 credits)*
- Developmental Science (15 credits)*
- Occupational Psychology (15 credits)
- Psychology of Sport and Exercise (15 credits)
- Investigative Psychology (15 credits)
- Clinical and Counselling Psychology (15 credits)
- Final Psychology Project (30 credits)*

*Core module (must be passed in order to achieve the award)

Course overview

Tuition fee 2021-22: £18,500 ([learn more](#))

Indicative duration: 4 years

Qualification: BSc (Hons)

Funding options: [See here](#) for more information

Start dates

2021: September, November

2022: February, April, July

Entry requirements

For the academic entry route you must have the following qualifications as a minimum:

- three A-levels or equivalent

For the work experience entry route you must meet the following criteria:

- GCSE Maths and English at grade C or above, or equivalent
- three years' relevant work experience

If English is not your first language, your English ability should be equivalent to an IELTS score of 6.0. If you do not hold an IELTS or equivalent qualification, we will ask you to pass our free online English test.

READY TO APPLY?

Complete the online application form and an Admissions Adviser will be in touch to assist you in the enrolment process.



Do you want to understand what makes people tick? Through this short course you will study the science behind the mind, brain and behaviour. On completion of the course, you will have the opportunity to progress on to study our BPS accredited BSc (Hons) Psychology.

Syllabus

The CertHE Psychology is made up of the following modules and, upon completion, is equal to a total of 120 credits.

Level 4 modules

- Fundamentals of Effective Learning in Psychology (15 credits)*
- Introduction to Social Psychology (15 credits)*
- Personality and Intelligence (15 credits)*
- Introduction to Cognitive Psychology (15 credits)*
- The Psychology of Attitudes (15 credits)*
- Mental Health, Stress and Wellbeing (15 credits)*
- Introduction to Research Methods (30 credits)*

*Core module (must be passed in order to achieve the award)

Upon completion of your CertHE Psychology, we offer the opportunity for you to progress on to study for a full Bachelors degree (360 credits).

Course overview

Tuition fee 2021-22: £6,167 ([learn more](#))

Indicative duration: 16 months

Qualification: CertHE

Funding options: [See here](#) for more information

Start dates

2021: September, November

2022: February, April, July

Entry requirements

We believe that education should be accessible for everyone. That's why we offer an open entry route – meaning you don't need any prior academic or work experience in order to start studying with us.

If English is not your first language, your English ability should be equivalent to an IELTS score of 6.0. If you do not hold an IELTS or equivalent qualification, we will ask you to pass our free online English test. You will need to pass your first assignment set within the first three weeks of the course in order to continue with your studies.

READY TO APPLY?

[Complete the online application form](#) and an Admissions Adviser will be in touch to assist you in the enrolment process.



Can't choose between business and law? Fascinated by both criminology and psychology? Our combined courses exist to allow you to explore two different but complementary subject areas within the same programme.

These courses not only allow you to feed your curiosity of two subjects, they're perfect for those wish to specialise in a particular area, for example, law or psychology. You will delve into your core subject in detail, while focused modules in your secondary subject will help you gain a solid understanding of the field.

COMBINED COURSES

Course indicative duration	
BSc (Hons) Business Psychology	4 years
CertHE Business Psychology	16 months
BSc (Hons) Criminal Psychology	4 years
CertHE Criminal Psychology	16 months
LLB (Hons) Law with Business	4 years
CertHE Law with Business	16 months
LLB (Hons) Law with Criminology	4 years
CertHE Law with Criminology	16 months
LLB (Hons) Law with Psychology	4 years
CertHE Law with Psychology	16 months

- Why we're great**
- Many of our combined courses have a range of optional modules, allowing you to tailor your studies precisely to your interests.
 - Our dedicated and passionate tutors are all specialists in their fields and will be on-hand to offer individual support and guidance.
 - Designed with employability in mind, each combined course is beneficial for a wide range of career paths.

“Our combined courses offer the freedom to explore two subjects in detail rather than one. Importantly, graduates from combined courses have a wider set of skills valued by employers.”

Professor Janey Henderson, Deputy Academic Director, University of Essex Online

BSc (Hons) BUSINESS PSYCHOLOGY



Through this degree[◇] you will gain an understanding of the psychological behaviours of individuals within a business context. The skills and knowledge gained through this course can be applied immediately to the real world, making you an asset to any team or employer.

Syllabus

The BSc (Hons) in Business Psychology is made up of the following modules and, upon completion, is equal to a total of 360 credits.

Level 4 modules

- Fundamentals of Effective Learning in Psychology (15 credits)*
- Introduction to Social Psychology (15 credits)*
- Human Resources Management (15 credits)*
- Introduction to Cognitive Psychology (15 credits)*
- Fundamentals of Marketing (15 credits)*
- One optional module:
 - Personality and Intelligence (15 credits)
 - Business and Management Skills (15 credits)
- Introduction to Research Methods (30 credits)*

Level 5 modules

- Biological Psychology (15 credits)*
- Advanced Cognitive Psychology (15 credits)*
- Leadership and Managing Teams (15 credits)*
- Individual Differences, Emotions and Behaviours (15 credits)*
- Organisational Development and Change (15 credits)*
- Quantitative Psychology (15 credits)*
- Psychological Development through the Lifespan (15 credits)*
- Consumer Behaviour (15 credits)*

Level 6 modules

- Critical Social Psychology (15 credits)
- Developmental Science (15 credits)
- Occupational Psychology (15 credits)
- Business Strategy (15 credits)
- International Marketing Strategy (15 credits)
- Reasoning and Decision-Making in a Business Context (15 credits)
- Final Psychology Project (30 credits)*

Course overview

Tuition fee 2021-22: £18,500 ([learn more](#))

Indicative duration: 4 years

Qualification: BSc (Hons)

Funding options: [See here](#) for more information

Start dates

2021: September, November

2022: February, April, July

Entry requirements

For the academic entry route you must have the following qualifications as a minimum:

- three A-levels or equivalent

For the work experience entry route you must meet the following criteria:

- GCSE Maths and English at grade C or above, or equivalent
- three years' relevant work experience

If English is not your first language, your English ability should be equivalent to an IELTS score of 6.0. If you do not hold an IELTS or equivalent qualification, we will ask you to pass our free online English test.

READY TO APPLY?

[Complete the online application form](#) and an Admissions Adviser will be in touch to assist you in the enrolment process.



Through this short course you will be introduced to the exciting fields of business and psychology. You will develop an awareness of psychological theory and how this applies to a business context. This course can be used as a stepping stone towards studying the full Bachelors degree.

Syllabus

The CertHE Business Psychology is made up of the following modules and, upon completion, is equal to a total of 120 credits.

Level 4 modules

- Fundamentals of Effective Learning in Psychology (15 credits)*
- Introduction to Social Psychology (15 credits)*
- Human Resources Management (15 credits)*
- Introduction to Cognitive Psychology (15 credits)*
- Fundamentals of Marketing (15 credits)*
- One optional module:
 - Personality and Intelligence (15 credits)
 - Business and Management Skills (15 credits)
- Introduction to Research Methods (30 credits)*

*Core module (must be passed in order to achieve the award)

Upon completion of your CertHE Business Psychology, we offer the opportunity for you to progress on to study for a full Bachelors degree (360 credits).

Course overview

Tuition fee 2021-22: £6,167 ([learn more](#))

Indicative duration: 16 months

Qualification: CertHE

Funding options: [See here](#) for more information

Start dates

2021: September, November

2022: February, April, July

Entry requirements

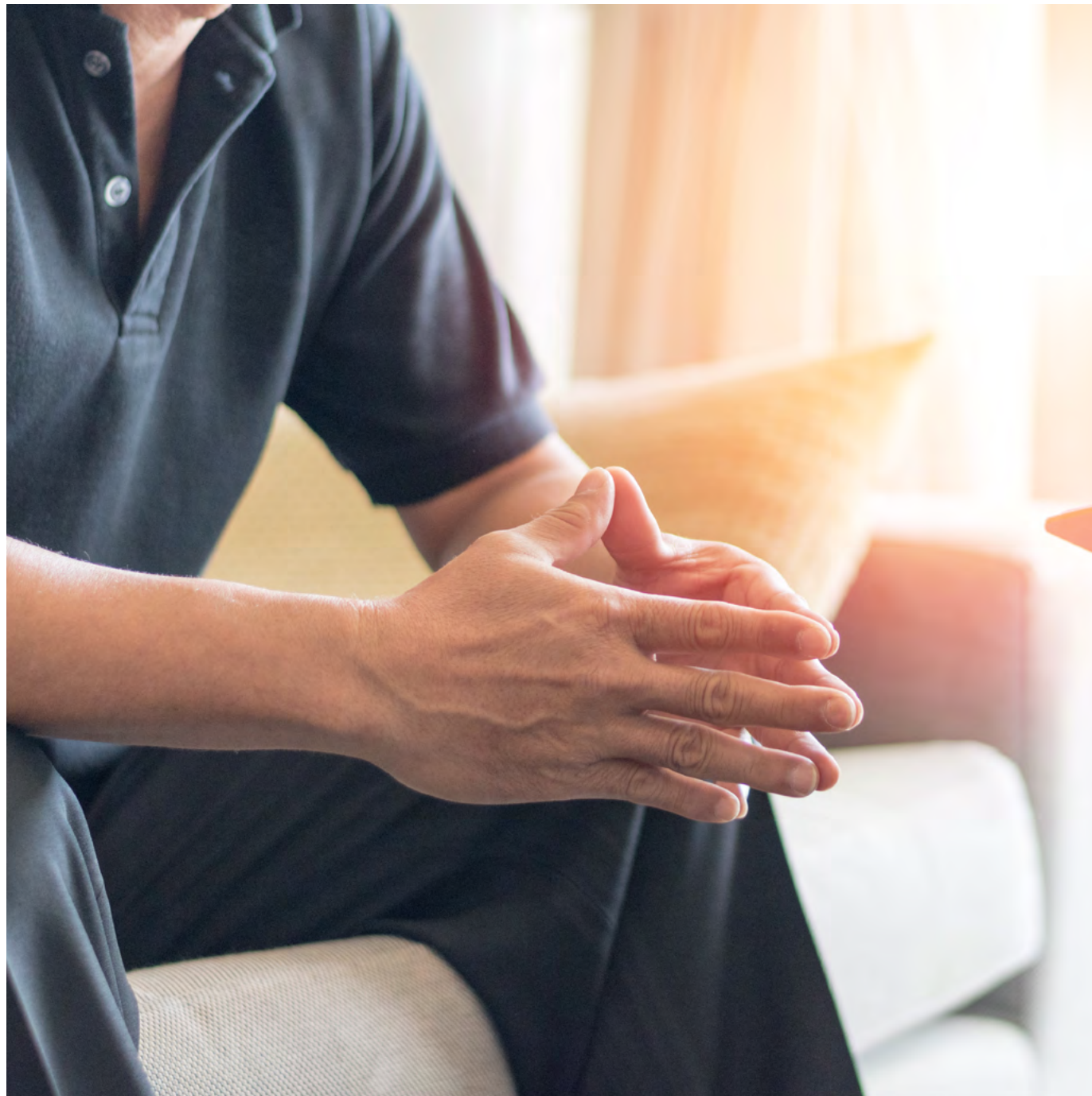
We believe that education should be accessible for everyone. That's why we offer an open entry route – meaning you don't need any prior academic or work experience in order to start studying with us.

If English is not your first language, your English ability should be equivalent to an IELTS score of 6.0. If you do not hold an IELTS or equivalent qualification, we will ask you to pass our free online English test. You will need to pass your first assignment set within the first three weeks of the course in order to continue with your studies.

READY TO APPLY?

Complete the online application form and an Admissions Adviser will be in touch to assist you in the enrolment process.

BSc (Hons) CRIMINAL PSYCHOLOGY



This degree[◇] enables you to learn more about the criminal mind and the critical issues in the criminal justice system. You will cover thought-provoking topics such as offender profiling, risk management and offender rehabilitation, in addition to the core areas of cognitive, social and developmental psychology.

Syllabus

The BSc (Hons) Criminal Psychology is made up of the following modules and is equal to a total of 360 credits.

Level 4 modules

- Fundamentals of Effective Learning in Psychology (15 credits)*
- Introduction to Social Psychology (15 credits)*
- Introduction to Cognitive Psychology (15 credits)*
- Introduction to Research Methods (30 credits)*
- Crime and Society (15 credits)*
- Introduction to Offender Profiling (15 credits)*
- One optional module from the list below**:
 - Dealing with Offending Behaviour (15 credits)
 - Personality and Intelligence (15 credits)

Level 5 modules

- Biological Psychology (15 credits)*
- Advanced Cognitive Psychology (15 credits)*
- Psychological Development through the Lifespan (15 credits)*
- Quantitative Psychology (15 credits)*
- Individual Differences, Emotions and Behaviours (15 credits)*
- Forensic Psychology (15 credits)*
- Two optional modules:
 - Criminology (15 credits)
 - Risk Assessment and Management (15 credits)
 - Criminal Investigation (15 credits)
 - Youth Crime and Justice (15 credits)
 - Prisons and Penology (15 credits)
 - Substance Misuse and Crime (15 credits)
 - Probation and Community Justice (15 credits)

Level 6 modules

- Critical Social Psychology (15 credits)
- Developmental Science (15 credits)
- Investigative Psychology (15 credits)
- Final Criminal Psychology Project (30 credits)*
- Criminal Behaviour and Deviance (15 credits)
- Victimology and Criminal Victimisation (15 credits)
- One optional module:
 - Policing (15 credits)
 - Economics of Crime (15 credits)
 - Criminal Justice in the Information Age (15 credits)

*Core module (must be passed in order to achieve the award)

Course overview

Tuition fee 2021-22: £18,500 ([learn more](#))

Indicative duration: 4 years

Qualification: BSc (Hons)

Funding options: [See here](#) for more information

Start dates

2021: September, November

2022: February, April, July

Entry requirements

For the academic entry route you must have the following qualifications as a minimum:

- three A-levels or equivalent

For the work experience entry route you must meet the following criteria:

- GCSE Maths and English at grade C or above, or equivalent
- three years' relevant work experience

If English is not your first language, your English ability should be equivalent to an IELTS score of 6.0. If you do not hold an IELTS or equivalent qualification, we will ask you to pass our free online English test.

READY TO APPLY?

[Complete the online application form](#) and an Admissions Adviser will be in touch to assist you in the enrolment process.



This short course enables you to delve into the scientific and theoretical underpinnings of psychology and develop knowledge in specialist areas such as the criminal justice system. Upon completing the course, you will have the chance to progress onto studying the Bachelors degree.

Syllabus

The CertHE Criminal Psychology is made up of the following modules and, upon completion, is equal to a total of 120 credits.

Level 4 modules

- Fundamentals of Effective Learning in Psychology (15 credits)*
- Introduction to Social Psychology (15 credits)*
- Introduction to Cognitive Psychology (15 credits)*
- Introduction to Research Methods (30 credits)*
- Crime and Society (15 credits)*
- Introduction to Offender Profiling (15 credits)*
- One optional module:
 - Dealing with Offending Behaviour (15 credits)
 - Personality and Intelligence (15 credits)

*Core module (must be passed in order to achieve the award)

Upon completion of your CertHE Criminal Psychology, we offer the opportunity for you to progress on to study for a full Bachelors degree (360 credits).

Course overview

Tuition fee 2021-22: £6,167 ([learn more](#))

Indicative duration: 16 months

Qualification: CertHE

Funding options: [See here](#) for more information

Start dates

2021: September, November

2022: February, April, July

Entry requirements

We believe that education should be accessible for everyone. That's why we offer an open entry route – meaning you don't need any prior academic or work experience in order to start studying with us.

If English is not your first language, your English ability should be equivalent to an IELTS score of 6.0. If you do not hold an IELTS or equivalent qualification, we will ask you to pass our free online English test. You will need to pass your first assignment set within the first three weeks of the course in order to continue with your studies.

READY TO APPLY?

[Complete the online application form](#) and an Admissions Adviser will be in touch to assist you in the enrolment process.

LLB (Hons) LAW WITH BUSINESS

♦ If you enrol onto this programme by September 2021, you can choose the Legal Practice Course (LPC) route rather than the SQE route to qualify as a solicitor. This programme also meets Bar Standards Board's (BSB) academic component of training to become a barrister.



This degree♦ is for you if you're considering a commercial law career or want to enhance your business acumen by gaining knowledge of important legal and regulatory principles. Your specialism in the fields of law and business will make you an asset to any corporation.

Syllabus

The LLB (Hons) Law with Business is made up of the following modules and, upon completion, is equal to 360 credits.

Level 4 modules

- Legal Skills and Context (30 credits)*
- Criminal Law (30 credits)†
- Public Law (30 credits)†
- Business Environment (15 credits)*
- One optional module:
 - Business and Management Skills (15 credits)
 - Fundamentals of Marketing (15 credits)
 - Human Resource Management (15 credits)
 - Introduction to Finance (15 credits)

Level 5 modules

- Contract Law (30 credits)†
- Law of Tort (30 credits)†
- Land Law (30 credits)†
- Operations Management (15 credits)*
- One optional module:
 - Leadership and Managing Teams (15 credits)
 - Marketing and Sales Management (15 credits)
 - Financial Decision Making (15 credits)
 - Business Planning (15 credits)
 - Project Management (15 credits)
 - Marketing Communications (15 credits)
 - Consumer Behaviour (15 credits)

Level 6 modules

- European Union Law (15 credits)†
- Equity and Trusts (15 credits)†
- Wills and the Administration of Estates (15 credits)†
- Business Strategy (15 credits)*
- Optional modules equal to 60 credits:
 - Final Year Research Project (30 credits)
 - Strategic Human Resource Management (15 credits)
 - International Marketing Strategy (15 credits)
 - Business Finance (15 credits)
 - e-Business and Marketing (15 credits)
 - Marketing Research (15 credits)
 - Services Marketing (15 credits)

*Core module (must be passed in order to achieve the award) † These modules are compulsory and must be passed in order to achieve a qualifying law degree.

Course overview

Tuition fee 2021-22: £18,500 ([learn more](#))

Indicative duration: 4 years

Qualification: LLB (Hons)

Funding options: [See here](#) for more information

Start dates

2021: August, September, October, November

2022: January, February, March, April, May, July

Entry requirements

For the academic entry route you must have the following qualifications as a minimum:

- three A-levels or equivalent

For the work experience entry route you must meet the following criteria:

- GCSE Maths and English at grade C or above, or equivalent
- three years' relevant work experience

If English is not your first language, your English ability should be equivalent to an IELTS score of 6.0. If you do not hold an IELTS or equivalent qualification, we will ask you to pass our free online English test.

READY TO APPLY?

Complete the online application form and an Admissions Adviser will be in touch to assist you in the enrolment process.



Through this short course you will develop knowledge of legal and business concepts, and gain transferable workplace that you can immediately apply to your current role.

Syllabus

This CertHE Law with Business is made up of the following modules and, upon completion, is equal to 120 credits.

Level 4 modules

- Legal Skills and Context (30 credits)*
- Criminal Law (30 credits)
- Public Law (30 credits)
- Business Environment (15 credits)*
- One optional module:
 - Business and Management Skills (15 credits)
 - Fundamentals of Marketing (15 credits)
 - Human Resource Management (15 credits)
 - Introduction to Finance (15 credits)

*Core module (must be passed in order to achieve the award)

Upon completion of your CertHE Law with Business, we offer the opportunity for you to progress on to study for a full Bachelors degree (360 credits).

Course overview

Tuition fee 2021-22: £6,167 ([learn more](#))

Indicative duration: 16 months

Qualification: CertHE

Funding options: [See here](#) for more information

Start dates

2021: August, September, October, November

2022: January, February, March, April, May, July

Entry requirements

We believe that education should be accessible for everyone. That's why we offer an open entry route – meaning you don't need any prior academic or work experience in order to start studying with us.

If English is not your first language, your English ability should be equivalent to an IELTS score of 6.0. If you do not hold an IELTS or equivalent qualification, we will ask you to pass our free online English test. You will need to pass your first assignment set within the first three weeks of the course in order to continue with your studies.

READY TO APPLY?

Complete the online application form and an Admissions Adviser will be in touch to assist you in the enrolment process.

LLB (Hons) LAW WITH CRIMINOLOGY

◊ If you enrol onto this programme by September 2021, you can choose the Legal Practice Course (LPC) route rather than the SQE route to qualify as a solicitor. This programme also meets Bar Standards Board's (BSB) academic component of training to become a barrister.

Tc



Through this degree[◊], you will gain a firm understanding of the English legal system as well as specialist knowledge of criminology and criminal behaviour. You will also develop key critical thinking skills that will prepare you for a broad range of disciplines, from law and criminology to related sectors.

Syllabus

The LLB (Hons) Law with Criminology is made up of the following modules and, upon completion, is equal to 360 credits.

Level 4 modules

- Legal Skills and Context (30 credits)*
- Criminal Law (30 credits)†
- Public Law (30 credits)†
- Introduction to Criminology (15 credits)*
- One optional module:
 - Crime and Society (15 credits)
 - Dealing with Offending Behaviour (15 credits)
 - Justice and Punishment (15 credits)

Level 5 modules

- Contract Law (30 credits)†
- Law of Tort (30 credits)†
- Land Law (30 credits)†
- Criminology (15 credits)*
- One optional module:
 - Forensic and Criminal Psychology (15 credits)
 - Criminal Investigation (15 credits)
 - Youth Crime and Justice (15 credits)
 - Prisons and Penology (15 credits)
 - Probation and Community Justice (15 credits)

Level 6 modules

- European Union Law (15 credits)†
- Equity and Trusts (15 credits)†
- Wills and the Administration of Estates (15 credits)†
- Criminal Behaviour and Deviance (15 credits)*
- Optional modules worth 60 credits:
 - Final Year Research Project (30 credits)
 - Victimology and Criminal Victimisation (15 credits)
 - Criminal Justice in the Information Age: Cyber Crime and Security (15 credits)
 - The Economics of Crime (15 credits)
 - Policing (15 credits)

Course overview

Tuition fee 2021-22: £18,500 ([learn more](#))

Indicative duration: 4 years

Qualification: LLB (Hons)

Funding options: [See here](#) for more information

Start dates

2021: September, November

2022: February, April, July

Entry requirements

For the academic entry route you must have the following qualifications as a minimum:

- three A-levels or equivalent

For the work experience entry route you must meet the following criteria:

- GCSE Maths and English at grade C or above, or equivalent
- three years' relevant work experience

If English is not your first language, your English ability should be equivalent to an IELTS score of 6.0. If you do not hold an IELTS or equivalent qualification, we will ask you to pass our free online English test.

READY TO APPLY?

[Complete the online application form](#) and an Admissions Adviser will be in touch to assist you in the enrolment process.

*Core module (must be passed in order to achieve the award) † These modules are compulsory and must be passed in order to achieve a qualifying law degree.



Through this short course you will gain a solid grounding in the fundamentals of the English legal system, as well as a broad theoretical understanding of criminological, psychological, biological and sociological explanations of crime.

Syllabus

The CertHE Law with Criminology is made up of the following modules and, upon completion, is equal to 120 credits.

Level 4 modules

- Legal Skills and Context (30 credits)*
- Criminal Law (30 credits)
- Public Law (30 credits)
- Introduction to Criminology (15 credits)
- One optional module:
 - Crime and Society (15 credits)
 - Dealing with Offending Behaviour (15 credits)
 - Justice and Punishment (15 credits)

*Core module (must be passed in order to achieve the award)

Upon completion of your CertHE Law with Criminology, we offer the opportunity for you to progress on to study for a full Bachelors degree (360 credits).

Course overview

Tuition fee 2021-22: £6,167 ([learn more](#))

Indicative duration: 16 months

Qualification: CertHE

Funding options: [See here](#) for more information

Start dates

2021: September, November

2022: February, April, July

Entry requirements

We believe that education should be accessible for everyone. That's why we offer an open entry route – meaning you don't need any prior academic or work experience in order to start studying with us.

If English is not your first language, your English ability should be equivalent to an IELTS score of 6.0. If you do not hold an IELTS or equivalent qualification, we will ask you to pass our free online English test. You will need to pass your first assignment set within the first three weeks of the course in order to continue with your studies.

READY TO APPLY?

[Complete the online application form](#) and an Admissions Adviser will be in touch to assist you in the enrolment process.

LLB (Hons) LAW WITH PSYCHOLOGY

♦ If you enrol onto this programme by September 2021, you can choose the Legal Practice Course (LPC) route rather than the SQE route to qualify as a solicitor. This programme also meets Bar Standards Board's (BSB) academic component of training to become a barrister.

Tc



This degree♦ allows you to explore how does the legal system interact with the way people think and behave. Whatever your career aspirations, the specialist knowledge and skills you gain through this degree will prepare you for careers in either psychology or the legal sector, as well as related sectors.

Syllabus

The LLB (Hons) Law with Psychology is made up of the following modules and, upon completion, is equal to 360 credits.

Level 4 modules

- Legal Skills and Context (30 credits)*
- Criminal Law (30 credits)†
- Public Law (30 credits)†
- Introduction to Social Psychology (15 credits)*
- One optional module:
 - Introduction to Cognitive Psychology (15 credits)
 - Personality and Intelligence (15 credits)

Level 5 modules

- Contract Law (30 credits)†
- Law of Tort (30 credits)†
- Land Law (30 credits)†
- Psychological Development through the Lifespan (15 credits)*
- One optional module:
 - Biological Psychology (15 credits)
 - Reasoning and Decision-Making (15 credits)
 - Forensic Psychology (15 credits)

Level 6 modules

- European Union Law (15 credits)†
- Equity and Trusts (15 credits)†
- Wills and the Administration of Estates (15 credits)†
- Critical Social Psychology (15 credits)*
- Optional modules worth 60 credits:
 - Final Year Research Project (30 credits)
 - Developmental Science (15 credits)
 - Occupational Psychology (15 credits)
 - Investigative Psychology (15 credits)
 - Clinical and Counselling Psychology (15 credits)

*Core module (must be passed in order to achieve the award)

† These modules are compulsory and must be passed in order to achieve a qualifying law degree.

Course overview

Tuition fee 2021-22: £18,500 ([learn more](#))

Indicative duration: 4 years

Qualification: LLB (Hons)

Funding options: [See here](#) for more information

Start dates

2021: September, November

2022: February, April, July

Entry requirements

For the academic entry route you must have the following qualifications as a minimum:

- three A-levels or equivalent

For the work experience entry route you must meet the following criteria:

- GCSE Maths and English at grade C or above, or equivalent
- three years' relevant work experience

If English is not your first language, your English ability should be equivalent to an IELTS score of 6.0. If you do not hold an IELTS or equivalent qualification, we will ask you to pass our free online English test.

READY TO APPLY?

Complete the online application form and an Admissions Adviser will be in touch to assist you in the enrolment process.



Through this course, you will acquire knowledge of how the English legal system operates and learn about the science behind the mind, brain and behaviour.

Syllabus

The CertHE Law with Psychology is made up of the following modules and, upon completion, is equal to 120 credits.

Level 4 modules

- Legal Skills and Context (30 credits)*
- Criminal Law (30 credits)
- Public Law (30 credits)
- Introduction to Social Psychology (15 credits)
- One optional module:
 - Introduction to Cognitive Psychology (15 credits)
 - Personality and Intelligence (15 credits)

*Core module (must be passed in order to achieve the award)

Upon completion of your CertHE Law with Psychology, we offer the opportunity for you to progress on to study for a full Bachelors degree (360 credits).

Course overview

Tuition fee 2021-22: £6,167 ([learn more](#))

Indicative duration: 16 months

Qualification: CertHE

Funding options: [See here](#) for more information

Start dates

2021: September, November

2022: February, April, July

Entry requirements

We believe that education should be accessible for everyone. That's why we offer an open entry route – meaning you don't need any prior academic or work experience in order to start studying with us.

If English is not your first language, your English ability should be equivalent to an IELTS score of 6.0. If you do not hold an IELTS or equivalent qualification, we will ask you to pass our free online English test. You will need to pass your first assignment set within the first three weeks of the course in order to continue with your studies.

READY TO APPLY?

[Complete the online application form](#) and an Admissions Adviser will be in touch to assist you in the enrolment process.

IMPORTANT STUFF

This is an important decision – perhaps one of the most important decisions you’ll ever make.

So we’ve put together all the information you need about funding your degree and applying to study. If you have any questions, our friendly Admissions team will be happy to talk it over with you.



FEES AND FUNDING

We know that cost is a huge factor in any decision you make to study.

That's why we have a range of funding options to choose from and a knowledgeable team on hand to help you make the right decisions about financing your studies.

Programme	Full tuition fee (2021-22)*	Indicative study duration**	Credits
CertHE	£6,167	16 months	120
BA (Hons)	£18,500	4 years	360
BSc (Hons)	£18,500	4 years	360
LLB (Hons)	£18,500	4 years	360
BA (Hons) Top-up	£6,167	16 months	120

*Prices are reviewed annually. We reserve the right to increase tuition fees in line with the RPI-X index. If you pay your tuition fees annually in advance the tuition fees will not be increased before your next annual payment. Please read our [Terms and Conditions](#) for more details.

**The indicative study duration is a guide to how long your course will take to complete. The actual duration may vary depending on study options chosen and module availability.

All tuition fees shown are net of any applicable sales tax payable by you in your country of residence. Where we are required to add sales tax at the local statutory rate, this will be added to the tuition fees shown and confirmed during the payment process.

Payment options

Students living in England can apply for a for a government backed undergraduate student loan. [See next page for more details.](#)

If you are not eligible for a tuition fee loan, we provide a simple monthly payment plan to spread the cost of your tuition fee.

Alternatively, you may pay your course fee up front. We offer a 5% discount to anyone who makes the full tuition fee payment up front.

Money back guarantee

Our 21-day money back guarantee means that it is possible for you to try out the online learning experience and confirm that it is right for you.

If after three weeks you are not satisfied with the course you can receive a full refund. [Terms and Conditions](#) apply.



STUDENT LOANS



Students living in England can apply for a government backed undergraduate student loan.

Undergraduate student loans are paid directly to us, and the amount you are eligible to borrow is set each year by the Student Loans Company.

Eligibility

Eligibility is determined by the Student Loans Company. For students living in England, requirements include:

- be a UK national, or have settled or pre-settled status under the EU Settlement Scheme
- normally live in England
- have been living in the UK for 3 years before starting your course

Are you eligible for a student loan? Click here to find out.

If you are not eligible for a student loan, you can take advantage of our flexible monthly payment plans and range of scholarships and discounts. **See more on the next page.**

Loan repayments

You'll only start making repayments if your income is more than £27,295 per year and any outstanding balance will be written off after 30 years. Your monthly repayments will be based on your income, not how much you borrowed. If your circumstances change and your annual income drops below £27,295 your repayments will stop.

SCHOLARSHIPS AND DISCOUNTS

As part of our mission to make education more accessible, we have a range of options available to reduce the cost of your learning.

Full payment discount

If you choose to pay your full course fee up front, we'll apply a 5% discount.*

International scholarship

International students residing in specific regions outside of the UK may be eligible for a partial scholarship for our undergraduate online courses.

Talk to a member of our Admissions team to find out more and if you are eligible.

ELCAS funding

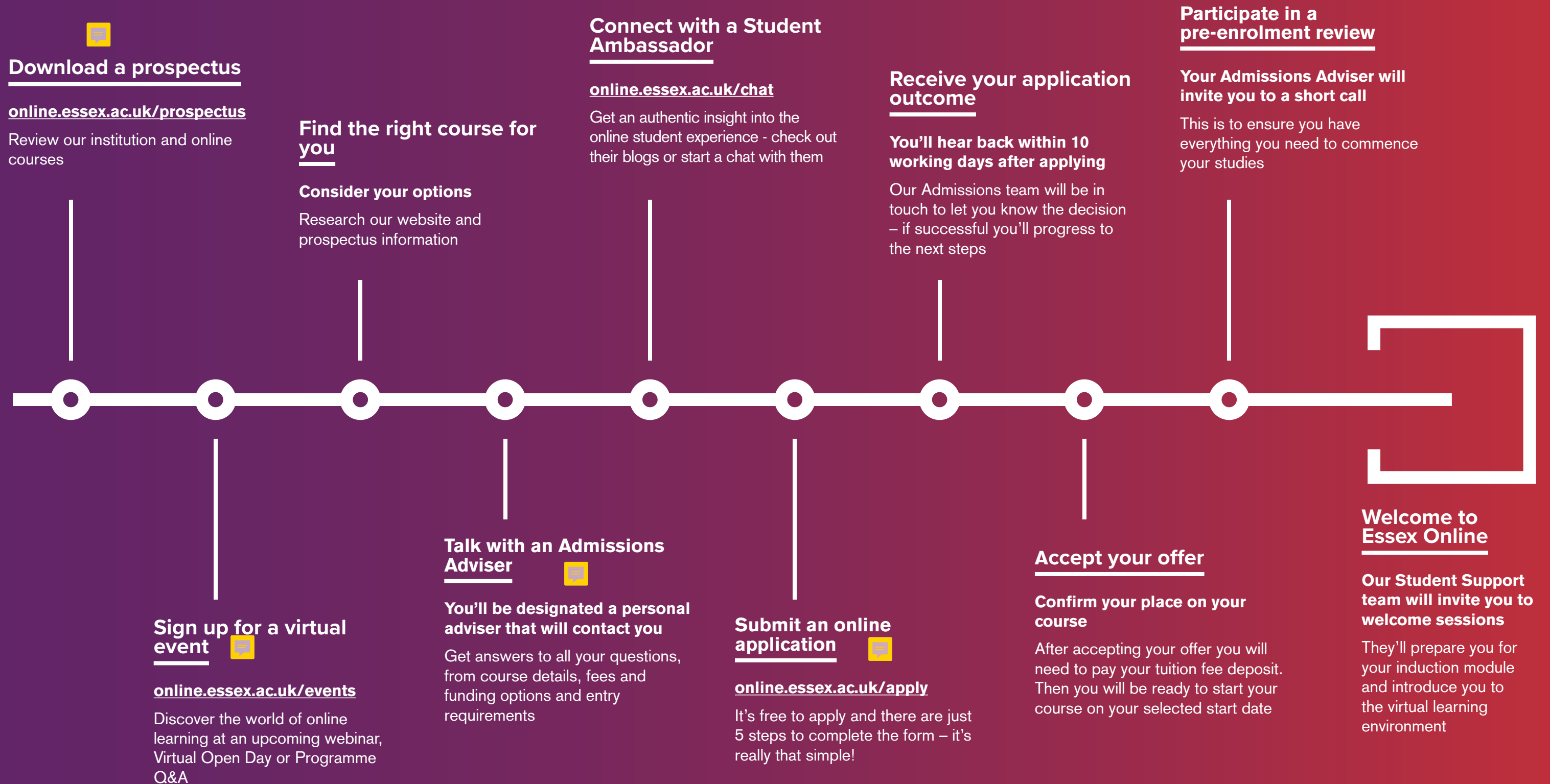
For those in the Armed Forces in the UK who are considering their options for resettlement, you may be able to access funding from the Enhanced Learning Credits Administration Service (ELCAS). All of our courses are approved by the scheme – just mention it to our Admissions team when you apply.



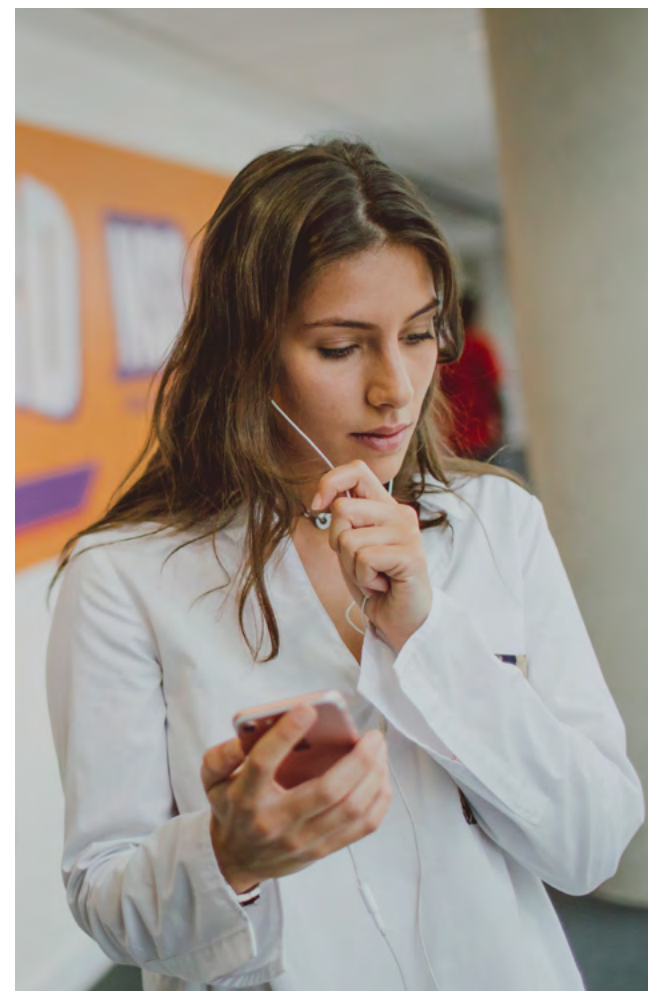
*This is only applicable to students studying online and does not apply to students studying on campus.



STEPS TO JOIN ESSEX ONLINE



ENTRY REQUIREMENTS



We consider all applications on an individual basis, taking into account your professional background, work experience and academic achievements, as well as offering entry routes for those without any of these.

For more detailed information on the specific entry requirements for each undergraduate course, please check the course page in this prospectus.



Excited to get started? Submit an online application [here](#).

Got some questions? Simply [get in touch](#) and our experienced Admissions Advisers would be happy to help.



IMPORTANT INFORMATION

About this prospectus

When we might make changes to advertised courses and other information

This prospectus is intended to answer your questions about the academic provision on offer at University of Essex Online. It was prepared in 2021 and refers to courses which will be available in the 2021-22 academic year. We have made every effort to ensure the prospectus is accurate at the time it is produced.

It can be necessary to make minor changes to our courses or our **Terms and Conditions**. Reasons for this may include: to reflect changes in relevant laws and regulatory requirements; to implement minor technical adjustments and improvements, to ensure consistency with UK higher education sector practice and guidance, including complying with our obligations under the Quality Code. In exceptional circumstances it may be necessary to make more significant changes to a course or our **Terms and Conditions**. Changes may include:

- to increase tuition fees annually to proportionately reflect the costs associated with establishing and providing the course, such as any changes in higher education funding we may receive
- to correct errors
- by adding or removing optional modules
- if a third party such as the University of Essex or the Student Loans Company imposes changes on us, such as amending a policy or procedure

If a course change or closure is proposed in such circumstances, we will take all reasonable steps to minimise disruption to students. This will include informing students of the changes in advance and giving them appropriate opportunity to comment on the proposals.

No liability for matters outside our control

We are not responsible for delays or inaccessibility outside our control. If our provision of courses is delayed or the learning platform is inaccessible due to an event outside our control, then we will contact you as soon as possible to let you know and we will take steps to minimise the effect. Provided we do this we will not be liable for delays or inaccessibility caused by the event, but if there is a risk of substantial delay or inaccessibility you may contact us to end the contract, and receive a refund for any part of a course you have paid for but not received.

Admissions Policy

Applicants are considered in line with our **Admissions Policy**.

Terms and Conditions

If we approve your application, we will send you an offer letter which will confirm the details of your course and start date. We will also send you a study plan showing an indicative study duration for your course and a payment plan outlining your net tuition fees. The offer letter will contain a link to our acceptance form.

Acceptance of your application will take place when you use the link on the offer letter you receive from us and submit the online acceptance form. At this point a contract will come into existence between you and us. By submitting the online acceptance form you are formally accepting your place on the course and start date as set out in your offer letter. Submission of the acceptance form also constitutes your agreement to our **Terms and Conditions**.

Key policies

Our policies are available at:
online.essex.ac.uk/policies

Quality assurance and teaching excellence

University of Essex Online programmes are delivered by Kaplan Open Learning, an experienced online learning provider. We have been working in partnership with the University of Essex since 2007.

We are registered with the **Office for Students**. That means we meet its requirements for course quality, student support and more. This includes meeting the expectations for standards and quality that are set out in the **UK Quality Code for higher education**. Our dedication to offering our students a transformational education has led to Kaplan Open Learning being awarded the highest rating of gold in the Teaching Excellence Framework (2018). The gold rating demonstrates the institution delivers consistently outstanding teaching, learning and outcomes for its students and is of the highest quality found in the UK.

Kaplan Open Learning is part of Kaplan, Inc., one of the world's largest and most diverse education providers. We encourage our students to transform their lives and careers by delivering and expanding our suite of innovative, industry led and career enhancing higher education programmes.

Complaints procedure

University of Essex Online welcomes applications from all candidates with the potential to succeed. Our admissions procedures are designed to ensure that all applicants are considered wholly based on their aptitudes, skills and abilities in relation to their chosen programme of study. We recognise, however, that there may be occasions when applicants may feel that we have not adhered to our policies and the high standards that we set ourselves. Our **Complaints and Appeals Policy** for Applicants describes the process to follow if an applicant believes that they have grounds for an appeal or complaint.

Policy statement on equality and diversity

University of Essex Online recognises the value of diversity. We are committed to equality of opportunity for our students. We expect students to be treated with dignity and respect solely on the basis of their merits, abilities and potential, regardless of age, disability, sexual orientation, gender identity and gender expression, marriage and civil partnership, pregnancy and maternity, race, religion or belief, socio-economic

background, political beliefs and affiliations, family circumstances or other irrelevant distinction.

Tuition fee increases during your studies


The full tuition fees are advertised on **our website**. Full tuition fees include the cost of all core e-books. The applicable net tuition fees for your course will be shown on your payment plan. Tuition fees are reviewed annually. We reserve the right to increase tuition fees for current students in line with the RPI-X index and apply applicable sales taxes.

Money back guarantee

We stand behind the academic quality of our online courses and are committed to ensuring that you are enrolled on a course that's right for you. But if you decide it's not for you within the first 21 days then you can withdraw from your programme without any cost.

You may end your contract with us and not be charged any tuition fees (or obtain a full refund if you have paid them) at any time up until 21 days from the start date of your course. If you fund your undergraduate course via an undergraduate tuition fee loan, we will not activate it. **Terms and Conditions** apply.

Photography

Every effort has been made to obtain permission to reproduce the images contained herein. Please **get in touch**  if you have any queries or any information relating to the images.

Data for marketing purposes

Data has been selected for marketing purposes, but all claims are based on the most recent data that were available at the time of publishing.

Produced by the University of Essex Online Marketing team.

Please consider the environment before printing this document.

WE ARE ESSEX ONLINE. IF YOU GIVE UP AT THE FIRST OBSTACLE, ESSEX ONLINE ISN'T FOR YOU. IF YOU WANT TO BE SPOON-FED A COURSE, ESSEX ONLINE ISN'T FOR YOU. IF YOU'RE WILLING TO **MAKE SACRIFICES AND WORK HARD**, ESSEX ONLINE IS FOR YOU. WE'RE ON THE SIDE OF PEOPLE WITH **GRIT AND PERSEVERANCE**. WE'RE ABOUT PEOPLE WHO ARE BOLD ENOUGH TO **CHALLENGE THE STATUS QUO**. WE'RE AFTER PEOPLE WHO DEFY THE NAYSAYERS, BECAUSE **CHALLENGING CONVENTION** IS IN ON OUR DNA. WE WANT PEOPLE WHO LOVE TO LEARN HOW BUT ALSO **WANT TO CHALLENGE WHY**. IT DOESN'T MATTER WHERE YOU'RE FROM, WHAT YOU DO OR WHAT STAGE IN LIFE YOU'RE AT. WE'RE INTERESTED IN HOW YOU WANT TO GROW AND **WHAT YOU WANT TO CHANGE**. WE'LL PROVIDE YOU WITH THE KNOWLEDGE AND SKILLS TO **TRANSFORM LIVES: YOURS AND THOSE AROUND YOU**. WE'LL CONNECT YOU WITH PEOPLE FROM ALL CORNERS OF THE WORLD – **A TRULY GLOBAL COMMUNITY**. SO, ARE YOU GOING TO SIT AND WATCH THE WORLD GO BY? OR DO YOU HAVE THE NERVE TO **FACE CHALLENGES HEAD ON?** WE'LL BE HERE EVERY STEP OF THE WAY HELPING YOU **REALISE YOUR AMBITIONS**. IF YOU'RE READY – **WELCOME HOME.**

online.essex.ac.uk



+44 (0) 1206 489 358 | enquiries@online.essex.ac.uk