



Welcome

This guide will help you find the perfect accommodation that suits your needs for when you start your course in Autumn 2021.

Click on the page links below for useful information:

[Introduction](#)

[Brighton](#)

[Living in Brighton](#)

[Getting around](#)

[Accommodation](#)

[Kaplan Living Brighton](#)

[Room types](#)

[Compare your options](#)

[Kaplan Living Special Support](#)

[Student starter pack](#)

[How to book](#)

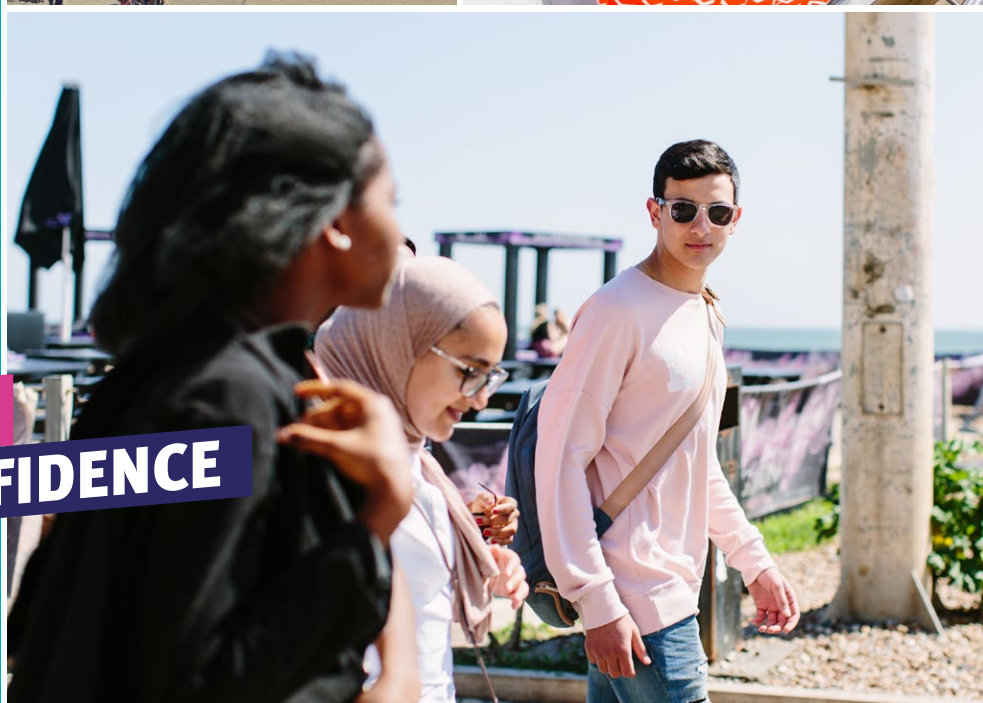
[How to pay](#)

[Accommodation guarantee deadline](#)

[Useful information](#)

[Find out more](#)

We're looking forward to welcoming you to the UK soon. Our dedicated accommodation team is here to support you and guide you through the options that best suit your individual needs.



**LIVE
WITH
CONFIDENCE**

Live with confidence

We can't wait for you to join us in the UK at one of our safe and comfortable residences. Our dedicated accommodation team is available to guide you through your options, answer any questions you have, and support you if your situation changes.

We are here for you

Keeping all our students safe is our top priority. We will continue to follow UK government health and safety guidelines at all times, so you can rest assured that our residences and accommodation partners are taking the necessary precautions to protect your wellbeing.

Our dedicated accommodation team is here to discuss your options with you, or if you need help or support at any time.

Accommodation guarantee deadline

If your course starts in Autumn 2021 (September 2021 or October 2021) you're guaranteed a room with us if you accept your offer to study by the guarantee date. See all the guarantee dates [here](#).

Don't worry, if you miss the guarantee deadline we'll still do all we can to find you a fantastic place to stay during your course.

Your accommodation options

In this guide you'll find detailed information about your accommodation options in the UK. Once you accept your offer to study, you can log in to our [accommodation portal](#) and reserve your room.

We operate on a first-come, first-served basis and all options are subject to availability. When you log in to our portal, you will be able to see all currently available options, and can pick your preferred room type.

Coronavirus information

We are continuing to do everything we can to keep our students as safe as possible during the pandemic, in keeping with government guidance. You can [check our website](#) for the most up-to-date information on accommodation and coronavirus measures.



Living in Brighton

Famous for its iconic pebble beaches, Brighton is a vibrant and forward-thinking city. Just an hour from London and close to the beautiful South Downs, it offers a great student experience.

Experience Brighton

Nature

Take a walk in one of Brighton's many beautiful parks and public spaces, including the Royal Pavilion Gardens, a green oasis in the heart of the city. Brighton is located right on the beach and within easy reach of the lovely South Downs countryside.

Culture

Explore Brighton's world-class arts scene, including spectacular performance art, dance, photography, comedy and exhibitions. The city is home to a famously creative community and is host to many festivals throughout the year. These include the annual Brighton Festival, the largest arts festival in England which holds over 150 music, theatre and dance events, and attracts over 150,000 visitors.

History

Discover the story of Brighton at the Brighton Museum and Art Gallery: learn about the city's past and see some of the UK's most important exhibitions.

Nightlife

Experience Brighton's lively music scene and dance the night away with your new friends in some of the best clubs on the UK's south coast.

Sports

Brighton offers fantastic sporting opportunities, with a range of first-class sports facilities open to the public. The city is also home to the Brighton and Hove Albion Football Club, known as the Seagulls, who play at the magnificent AMEX Stadium.

Shopping

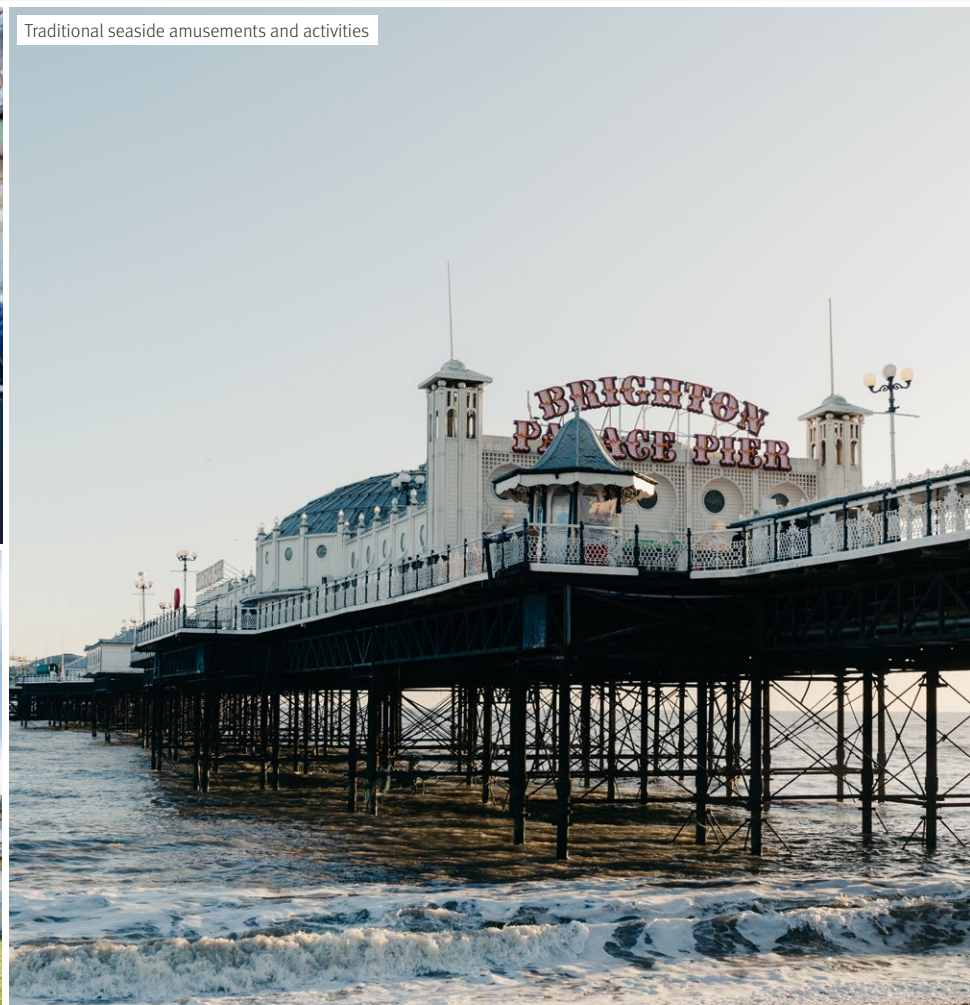
Hunt for bargains at the Churchill Square Shopping Centre. You can also browse the unique, independent stores found around the quirky areas known as The Lanes and North Laine.

Food

Try new and exciting food from around the world, including a variety of vegetarian dishes, award-winning cuisines and traditional fish and chips on the seafront.

Outside the city

Explore the South Downs, an ideal place to visit and enjoy the diverse landscape and stunning views. While you're there, you could try outdoor activities including country walks and cycling.



Getting around

Brighton is a city which is extremely easy to get around on foot. The residence is conveniently located close to the beach, supermarkets, shops and restaurants, and within easy reach of the College.

Transport

🚌 Buses

The frequent bus service is a great value and easy way to get around the city.

🚆 Trains

The train station has excellent connections to London and other major UK cities, as well as to other parts of the south coast. There is also a regular service to Gatwick Airport.

🚖 Taxis

The city also has a reliable taxi service, with taxi ranks located all around the city. They're great for short trips, or for when you have heavy luggage.

🚲 Bicycles

There are designated bicycle lanes all around the city.



Kaplan Living Brighton

Our new, purpose-built accommodation provides an outstanding living and learning environment where students can enjoy a comfortable, safe and friendly home.



Location

You will be close to the stunning Brighton Pavilion, and just a 10-minute walk from the beach. You'll also be living close to the city's famous pier, and just a short walk from the city centre, with all its shops, bars and restaurants.



Private bedrooms

Fantastic modern bedrooms with private shower rooms, study area, and storage space.



Kitchen

Fully equipped shared or private kitchens so you can prepare your own meals.



Social spaces

Amazing communal area with study space and game lounge.



Facilities

There is a bike storage and a laundry room on the ground floor for you to wash your clothes (usage charges apply).



Internet

Free high-speed WiFi is available to all students throughout the building.



Bills included

No surprises with electricity, gas and water charges. All bills and maintenance are included in the accommodation price.



Journey time to class

A 10-minute bus ride to the Moulsecomb campus and International College, and a 10-minute walk to the Grand Parade campus.



Security

On-site management team, round-the-clock security cameras for your safety, and secure door entry systems.



Cleaning

Communal areas including kitchens in the shared flats are cleaned regularly, free of charge.



Kaplan Living Special Support

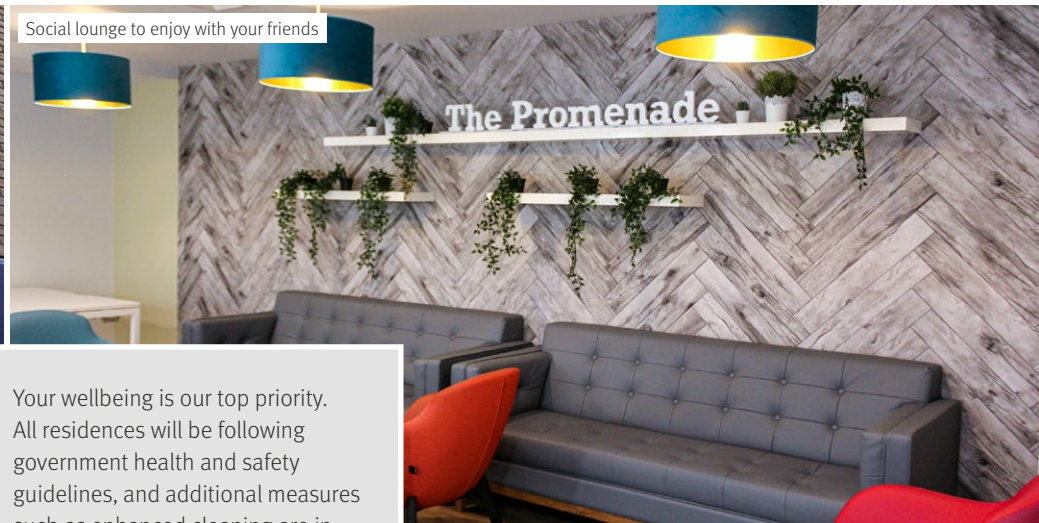
If you are under the age of 18, or choose to benefit from this service, Wellbeing Coordinators will be available 24/7 to support you.

You can learn more about Kaplan Living Special Support [here](#).

All private bedrooms | New building in central location | Easy access to the College | Modern entertainment facilities



Your new home in Brighton

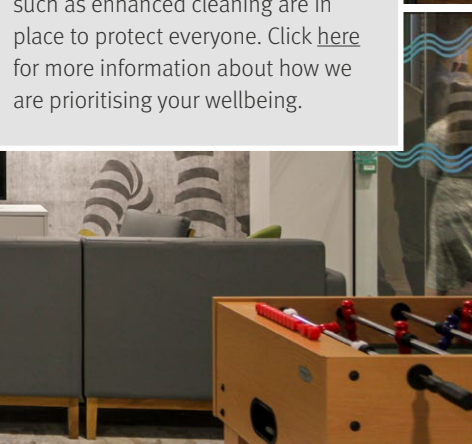


Social lounge to enjoy with your friends

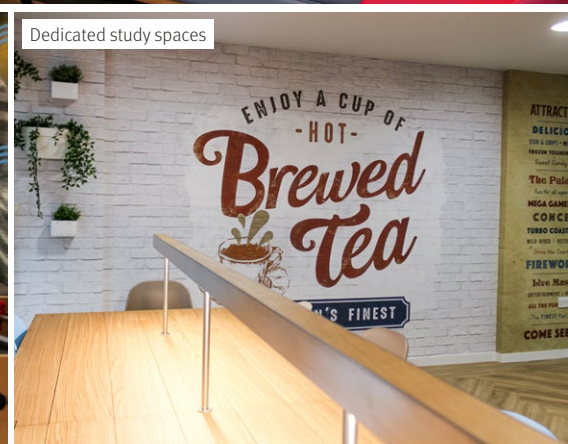
Your wellbeing is our top priority. All residences will be following government health and safety guidelines, and additional measures such as enhanced cleaning are in place to protect everyone. [Click here](#) for more information about how we are prioritising your wellbeing.



Modern entertainment facilities



Dedicated study spaces



Classic Bedroom

A medium-sized private bedroom in a shared flat of up to 7 students, with a fully equipped shared kitchen.

Features



Bedroom - private

- Small double bed
- Wardrobe, bedside unit and storage space
- Desk, chair, shelving, cupboard and pin board



Bathroom - private

- Shower, toilet and basin



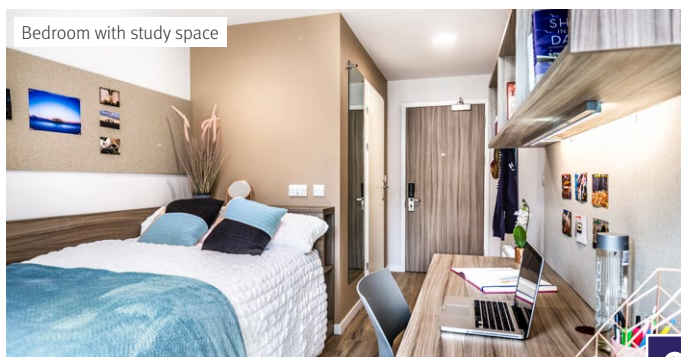
Kitchen - shared

- Oven, hob, fridge-freezer, microwave and cupboard
- Dining area and sofa

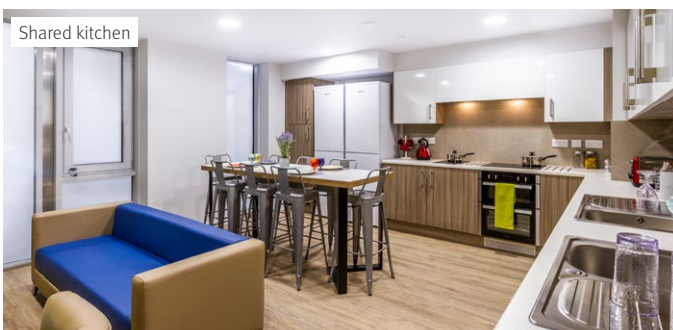
Floor plan

Approximate room size: 13,5m²

Please note: images intended for illustrative purposes only. Actual room layout, contents and furnishings may differ.



Bedroom with study space



Shared kitchen

[Review the price and dates of this type of room for your pathway course](#)

Deluxe bedroom

This medium sized private bedroom in a shared flat of up to 7 students is typically located on the upper floors of the building.

Features



Bedroom - private

- Small double bed
- Wardrobe, bedside unit and under-bed storage
- Desk, chair, shelving, cupboard and pin board
- Great views of the city



Bathroom - private

- Shower, toilet and basin



Kitchen - shared

- Oven, hob, fridge-freezer, microwave and cupboard
- Dining area and sofa

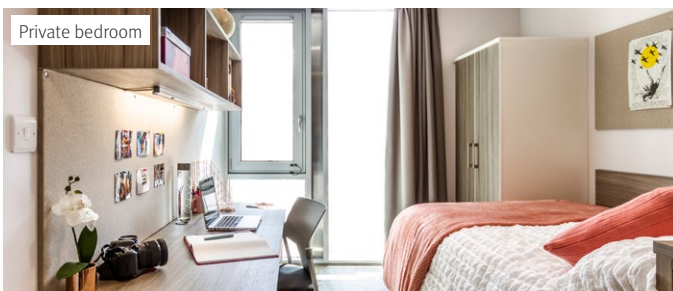
Floor plan

Approximate room size: 13,5m²

Please note: images intended for illustrative purposes only. Actual room layout, contents and furnishings may differ.



Fully equipped shared kitchen



Private bedroom

[Review the price and dates of this type of room for your pathway course](#)

Kaplan Living Brighton

Studio room

This large, self-contained private flat has its modern private kitchen facilities and a private bathroom.

Features

Bedroom - private



- Small double bed
- Wardrobe, bedside unit and under-bed storage
- Desk, chair, shelving, cupboard and pin board
- Dining table with chair



Bathroom - private

- Shower, toilet and washbasin



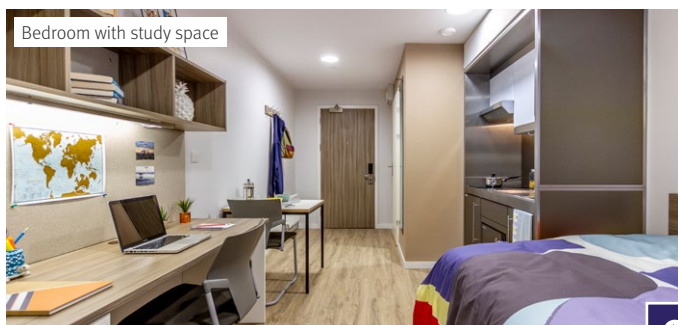
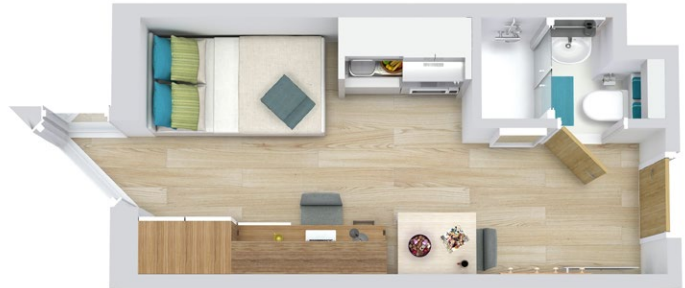
Kitchen - private

- Sink, electric hob, small fridge and combination microwave oven and cupboard

Floor plan

Approximate room size: 17,5m²

Please note: images intended for illustrative purposes only. Actual room layout, contents and furnishings may differ.



Bedroom with study space



Private kitchen

[Review the price and dates of this type of room for your pathway course](#)

Panorama

These 3 exclusive, top-floor studios are the largest in the building. Each includes separated bedroom and seating areas and a private kitchen, with floor-to-ceiling windows providing stunning views over Brighton.

Features

Bedroom - private



- Small double bed
- Wardrobe, bedside unit and under-bed storage
- Desk, chair, shelving, cupboard and pin board
- Separate seating area with dining table and chairs



Bathroom - private

- Shower, toilet and basin



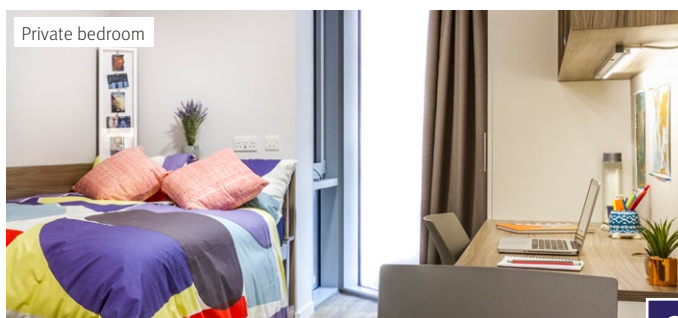
Kitchen - private

- Sink, electric hob, small fridge and combination microwave oven and cupboard

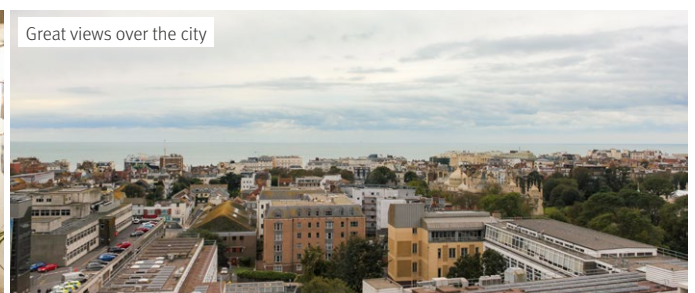
Floor plan

Approximate room size: 25m²

Please note: images intended for illustrative purposes only. Actual room layout, contents and furnishings may differ.



Private bedroom



Great views over the city

[Review the price and dates of this type of room for your pathway course](#)




Compare your options

Use the table below to see which options suit you, and select your preferences when booking your room.




	Kaplan Living Brighton			
Room type	Classic	Deluxe	Studio	Panorama
Approximate size	13.5m ²	13.5m ²	17.5m ²	25m ²
Students per flat	up to 7	up to 7	Private	Private
Bedroom	Private	Private	Private	Private
Study desk, chair, wardrobe, shelves, under-bed storage and notice board	✓	✓	✓	✓
Small double bed	✓	✓	✓	✓
Dining table with chair			✓	✓
Lounge area and coffee table				✓
Bathroom	Private	Private	Private	Private
Shower cubicle, washbasin and toilet	✓	✓	✓	✓
Kitchen	Shared	Shared	Private	Private
Hob, fridge-freezer, microwave and cupboard	✓	✓	✓	✓
Oven	✓	✓		
Seating and TV	✓	✓		
WiFi	✓	✓	✓	✓
Social areas cleaning	Weekly			
Journey time to the College	10-minute bus journey or 25-minute walk			
Available to	All students aged 16 and over			
Kaplan Living Special Support	Mandatory for students under 18 and optional for students aged 18 or over			

There are lots of benefits when you book accommodation with Kaplan

For your comfort

-  All private bedrooms
-  Your own study space
-  Free WiFi




For your convenience

-  Central location
-  Great transport links
-  On-site laundry

For your safety

-  On-site support staff
-  Secure door entry
-  Free contents insurance

For your enjoyment

-  Games rooms
-  TV room
-  Social events

While every effort will be made to allocate your first choice, we cannot guarantee this. We operate on a first-come, first-served basis and all options are subject to availability, therefore you may be offered another accommodation type or location, or we may refer you to another provider.




Kaplan Living Special Support





Enjoy enhanced support in our Kaplan Living residence.

Kaplan Living Special Support is available to students staying at Kaplan Living Brighton, offering additional support and helping you settle into your new home. If you're under the age of 18, this service is mandatory for your wellbeing.

This premium service will provide you with an extra level of support, helping you transition into your new life here in the UK. It will give you that extra peace of mind you might need to live with confidence.

For a fee of £300, you'll have 24/7 access to Wellbeing Coordinators, who will be permanently based at the residence. They can help you with things like:

-  Answering questions from you or your parents before you arrive in the UK
-  Helping you get settled into your new home
-  Making medical or dental appointments

-  Handling emergencies such as medical visits
-  Getting involved with the college and residence community
-  Arranging calls with your parents so you can keep in touch
-  Ensuring that you receive the care and support you need

Student starter pack

Free items for your arrival

To make your move as easy as possible, we provide a free 'student starter pack' with many of the basic items you'll need as soon as you move in. It means that you won't have to rush around the shops on your first day, and can settle right into your new accommodation.

Your bedding, cooking equipment and tableware items



How to book

You can book your accommodation by following the steps below.

Step 1 Choose your room

Check the [dates and prices on the accommodation page](#) on our website, and choose the option that matches your course dates.

Step 2 Log in to accommodation portal

If you have applied and received an offer of study, you'll need to accept your offer first. If you indicated on the application form you would like Kaplan-arranged accommodation, you'll then receive login details for the [accommodation portal](#) via email. If you have not received anything, please [contact us](#) and we'll arrange to resend it to you.

Step 3 Confirm your room selection

Use your login details to log into the [accommodation portal](#). Here, you will be able to see available options and you can choose your preferred room type.

Step 4 Kaplan will allocate your room

Once we have allocated your room, we will send you an email asking you to log back in to the [accommodation portal](#) to confirm your booking. You will need to sign your accommodation agreement electronically, nominate a guarantor and make your first accommodation payment.

Step 5 Confirmation of booking

Once you have completed the required steps, we will confirm your booking.

Step 6 Your arrival confirmation

When you are ready to come to the UK and have booked a flight, you will need to confirm your arrival details by completing the online [Pre-Arrival Form](#). The College will be able to book and confirm transfers for you; details are provided in the [Pre-Arrival Guide](#). Please submit your arrival details at least 2 weeks before you fly to ensure the College and your accommodation are prepared for your arrival.

How to pay

Before you arrive, you can pay your accommodation fees using one of the methods below:

Method 1

Bank transfer / credit or debit card to Flywire.

1. Visit UBICbrighton.flywire.com
2. Choose your country and the amounts you are paying in Pounds Sterling
3. Choose your payment method and make your payment to Flywire
4. Enter the payer details and those of the student you are paying for
5. Track and confirm your payment by email, SMS or by logging into UBICbrighton.flywire.com

Method 2

Bank draft or electronic transfer in Pounds Sterling to:

Bank Account Name: Kaplan Brighton Limited

Bank Name: HSBC Bank plc

Sort Code: 40-11-60

Bank Account Number: 60004278

BIC: HBUKGB4B

IBAN NO: GB23HBUK40116060004278

Bank Address: 60 Queen Victoria Street, London, EC4N 4TR

Payments

For your first payment, you can pay any amount from a minimum of £1,000 to the full accommodation price. This should be made before your arrival in the UK, and includes a £250 security deposit and a £750 accommodation fee. Depending on your accommodation option, the remaining amount is paid when you register for your first term, and before your second term (if applicable).

Accommodation guarantee deadline

You'll be guaranteed accommodation if you accept your offer to study and book your accommodation before the dates below.

Autumn 2021

Your accommodation contract start month	Guarantee date to book accommodation
September 2021	1 August 2021
October 2021	1 September 2021

Don't worry – if you miss the guarantee deadline, you can still login to the accommodation portal to see what options are available to you. If no options are available at the time, you can join our waitlist, and we'll do everything we can to help you find a great place to live in Brighton.



Useful information

You can find some helpful information below to guide you through your accommodation application.

Accommodation Agreement

The Accommodation Agreement is a contract confirming the details of your accommodation. By signing your Accommodation Agreement, you are agreeing, under UK law, to pay for your accommodation for the full length of the accommodation contract.

Accommodation confirmation

You must complete the required steps in order to secure your booking. If you fail to do so by the accommodation confirmation date, your agreement may be cancelled and your room given to another student to book. If your Accommodation Agreement is cancelled, and you tell us that you would still like to book Kaplan-arranged accommodation, you will be offered the next available room.

Accommodation portal login

You'll receive your login details via email once you have accepted your study offer.

Accommodation length change

You may not change your contract length after you have booked and signed your Accommodation Agreement.

First payment

The first payment is to secure your accommodation along with the signed Accommodation Agreement. The £1,000 first payment is then divided into £250 for the security deposit and £750 towards your accommodation fees. Your security deposit will be fully returned when you move out of your accommodation. It will not be refunded if the room is damaged or left in bad condition, or if there are any accommodation penalty charges outstanding.

Guarantors

A guarantor is someone who will be legally responsible for any accommodation fees you are unable to or fail to pay.

Kaplan Living Special Support

Because your wellbeing is extremely important to us, we are offering extra assistance to students staying at Kaplan Living Brighton. This package is called Kaplan Living Special Support. With this service, Wellbeing Coordinators will be on hand to help you settle into life in the UK, assist with any problems you encounter, and ensure that you can live and study with us safely. This 24/7 support is available to all students for an additional fee of £300 — just tick the box when making your booking via the accommodation portal to confirm you'd like to sign up to the service. This is an optional extra service for students over the age of 18; for those under 18, it is mandatory for their wellbeing.

Moving into your room

You will be able to move into your room from the start date of your contract, but only if you have sent us your signed Accommodation Agreement and first payment.

Refunds

When your Accommodation Agreement is cancelled and you decide not to take another offered room, refund of any fees paid will only be granted in line with Kaplan International Pathways' Terms and Conditions, and may be subject to an administration fee being deducted. If you leave the College for any reason after you arrive, accommodation fees will not be refunded.

Under 18s

The College will accommodate students under 18 years of age in a single-sex flat with other students under 18 years old. Students who are under the age of 18 on arrival in the UK may be asked to pay all their accommodation fees before they arrive, and are advised to stay in either Kaplan or university-arranged accommodation.

Visa

If your visa application is unsuccessful, please send a copy of your visa refusal documents (or other evidence) to your Admissions Adviser for review. A decision will then be made regarding eligibility for refund in line with the company's terms and conditions.



Find out more

Visit the links below or contact us for more information.
We look forward to welcoming you to Brighton!

Useful links:

- 🔗 [Accommodation in Brighton](#)
- 🔗 [Prepare for your studies at the College](#)
- 🔗 [University of Brighton](#)
- 🔗 [Student life in Brighton](#)
- 🔗 [Visit Brighton](#)

Social media:

Search: UBICBrighton



#KaplanLife

Contact details:

✉ Kaplan Living Brighton
5 Market Square Circus Street
Brighton, BN2 9AS

@ pathways.accommodation@kaplan.com

For accommodation queries with the Central Accommodation Team:

☎ +44 (0)20 8727 3500

For arrival queries with the College:

☎ +44 (0)12 7364 1050