

Accommodation Guide Summer 2020

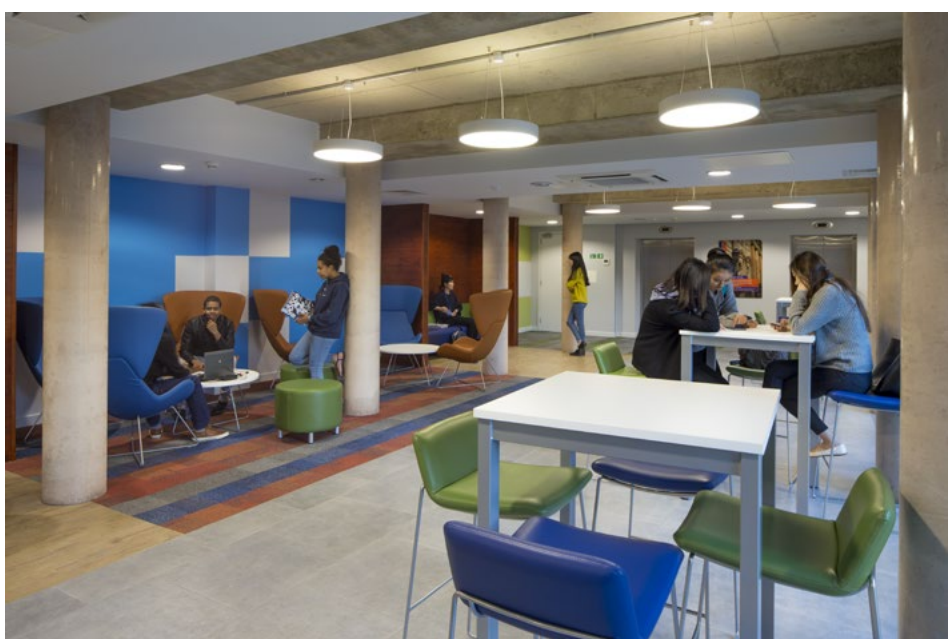
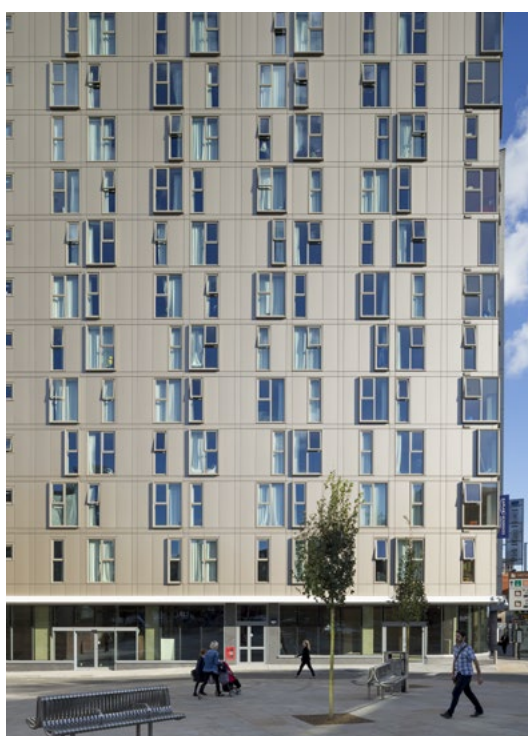
NOTTINGHAM
TRENT UNIVERSITY ^{NTU}

Nottingham Trent
International College



Contents

Life in Nottingham	3
Your new home	4
What students say	5
Kaplan Living Nottingham	6
Your accommodation options	7
Accommodation dates and prices	8
How to book	9
How to pay	10
Find out more	11



Life in Nottingham

Situated in the heart of England, Nottingham is a very popular place to live and study. It is a lively, multicultural and friendly city, big enough to be full of things to do, but small enough for you to feel welcome.

Experience Nottingham

Events

Visit the Old Market Square for local arts and crafts fairs, concerts and ice skating, or to relax on a man-made beach during the summer.

History

Go deep into Nottingham's network of caves hidden beneath the city, or experience the legend of Robin Hood at Nottingham Castle.

Shopping

Explore the Victoria Centre or search for unique items at the smaller stores in Hockley and the Lace Market.

Nightlife

Visit England's oldest pub, the Ye Olde Trip to Jerusalem (1189AD) or experience Nottingham's diverse music scene at the legendary Rock City.

Food

Choose from a variety of interesting restaurants and cafés. Try a traditional English Sunday roast, or exciting foods from around the world.

Sport

Cheer on Nottingham Forest Football Club at the City Ground and enjoy national and international cricket matches at Trent Bridge.

Outside the city

Take a short trip to visit Wollaton Hall: a beautiful country house and museum which featured in the Batman movie The Dark Knight Rises.

Getting around

Buses

Nottingham's bus service is the UK's largest public bus network and runs all around the city. It is one of the easiest and most affordable ways to travel in Nottingham.

Trams

Quick and cost effective, trams run from the city centre to the University, as well as to nearby towns.

Bicycles

Nottingham is Britain's second best city for cycling. Its many cycle routes make getting around by bike safe, quick and economical.

Taxis

Although they are more expensive than public transport, taxis can be convenient for shorter journeys.



Your new home

At Nottingham Trent International College, we are committed to the care and support of our students. Our comfortable residences have everything you need to help you feel at home from the moment you arrive in Nottingham. Read below to find out what the residences have to offer.

Conveniently located

Kaplan Living Nottingham is within easy reach of the College and city centre, and is close to supermarkets, restaurants and cafés.

Well equipped

Bedrooms include a small double bed, study desk, chair, lots of storage and bathroom facilities. Kitchens are fully equipped and modern, with a fridge-freezer, cooker and microwave.

Multicultural

In your new home, you will have the chance to meet and make friends with people from all over the world. It is a great opportunity to learn more about different countries, cultures and languages.

Private and clean

Make yourself at home in your own private bedroom with either a private or shared bathroom. A regular cleaning service of communal areas is included in the accommodation cost. There is also a laundry room in the building for you to wash your clothes.

Safe and secure

Feel at ease in your new home with secure access doors and round-the-clock security cameras.

Support and care

Dedicated management staff are available 24 hours a day to ensure that students can talk to someone at any time.

Social spaces

Enjoy common rooms which are equipped with a range of entertainment facilities. These spaces are ideal for spending time with your new friends.

Knowledge Hub

Students have access to the Knowledge Hub at Kaplan Living Nottingham, our state-of-the-art learning facility which offers additional academic support outside normal college hours.

Independent living

The accommodations are designed for independent student life. This means students will be responsible for cooking their own meals and cleaning their own rooms and clothes.

Included benefits

All bills (electricity, gas and water) and internet (broadband and / or WiFi) are included in the accommodation price.

To make your move as easy as possible, we provide a free 'student starter pack' with many of the basic items you'll need. You won't have to rush around the shops on your first day, and can settle right into your new accommodation. This is an extra benefit that would likely not be available in privately rented accommodation (see right for a detailed list of what may be included).

Student starter pack

Bedding

- Duvet with duvet cover
- Pillow with pillow case
- Fitted sheet

Cooking equipment

- Stainless steel frying pan
- Stainless steel saucepan
- Tin opener
- Solid and slotted nylon spoons
- Slotted nylon turner
- Nylon ladle
- Vegetable peeler
- Plastic colander

Tableware

- Cutlery (fork, spoon)*
- Dinner plate
- Side plate
- Cereal bowl
- Mug
- Glass tumbler

Plus

- Toilet roll
- Small hand towel
- Welcome toiletries pack (including miniature bath and shower gel, hand and body lotion, shampoo / conditioner, and soap)

Please note: actual contents of the student starter pack may vary.

* For legal reasons the College is not permitted to provide knives of any kind to students.

What students say

“

“I have made lots of friends while living at the residence. The facilities are great. The Knowledge Hub is so useful and I like hanging out in the TV room.”

Anastasia Shatalova
Russia

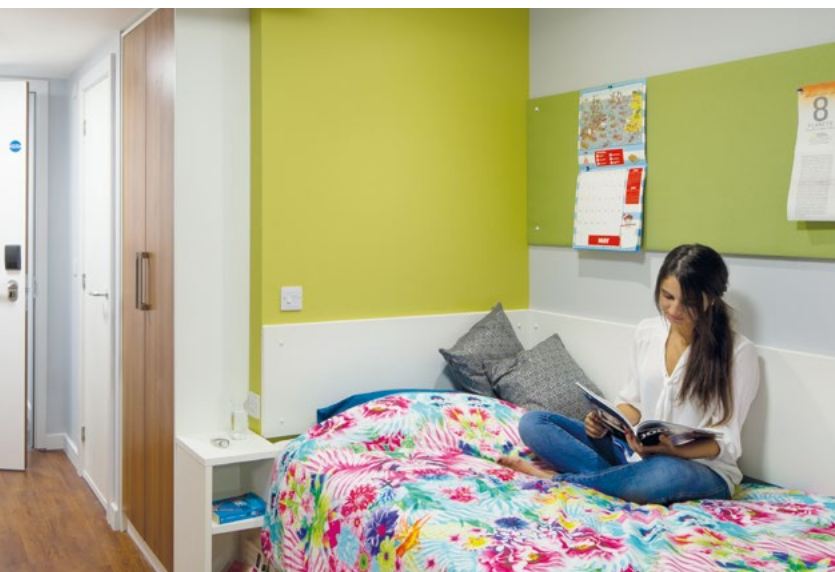


“

“The social spaces are very good for people who just arrived, like me. As soon as I got to Kaplan Living Nottingham I started to get to know people — it helped me settle in quickly.”

Al Qasim Al Lawati
Oman





Kaplan Living Nottingham

Room types: classic, deluxe and studio | **Available to:** all students
5-minute walk to the College | Cinema room | Social environment with events and activities | City centre location

Location

In the heart of Nottingham, close to local shops, restaurants, bars and supermarkets.

Distance

A 5-minute walk to the College.

Accommodation

Private bedrooms with either a small double or a double bed and private bathroom. Some studio rooms have a double bed. All rooms have a desk, chair, lamp and wardrobe.

Kitchen

Fully equipped shared kitchen with fridge-freezer, cooker, microwave, and dining area. Studios have a private kitchen.

Social spaces

Students have access to excellent social facilities, including the Knowledge Hub. There is also a pool table, ping pong table, table football, cinema room, social lounge area, and an outdoor space for events.

Other facilities

On-site laundry room and on-site secure bicycle storage.

Internet

All rooms have internet connection. Upgrades are available at a small additional charge. The building is also WiFi enabled.

Cleaning

Cleaning service for shared kitchens included in the cost.

Security

On-site service office 24/7, security cameras, and secure door entry.

See page 8 for full details of prices and accommodation lengths.

Your accommodation options

Residence name	Room type	Room size (approximate)	Accommodation details	Room information	Kitchen facilities	Bathroom facilities	Social facilities	Security	Internet access	Journey time to the College	Benefits	Available to
Kaplan Living Nottingham	Classic	13.5m ²	Shared flat with up to 5 people	Medium room with a small double bed, desk, lamp, chair and wardrobe	Self-catered with a shared kitchen	Private bathroom	<ul style="list-style-type: none"> • Knowledge Hub with pool table and more • Cinema room • Social lounge area • Outdoor space for events 	<ul style="list-style-type: none"> • On-site service office • 24/7 security • Secure door entry with key cards 	Broadband and WiFi	5-minute walk	<ul style="list-style-type: none"> • Social environment with events and activities • Cinema room • Fantastic views of Nottingham • City centre location 	All students
	Deluxe	14.5m ²		Large room with a double bed, desk, chair, lamp and wardrobe and panoramic views of the city								
	Studio	17.8m ²	Private apartment	Large room with either a small double or a double bed, desk, chair, lamp, wardrobe and private kitchen area	Self-catered with a private kitchen	Private bathroom						

Accommodation dates and prices

The tables below show the standard payment structure for accommodation in Summer 2020. You can pay any amount in your first payment, from the minimum £1,000, to the total accommodation price.

Residence name	Room specification	Accommodation length				First payment (which includes £250 deposit*) on signing agreement	Second payment (when you arrive)	Final payment (before second term)	Total accommodation price
		Start date	End date	Number of weeks	Number of terms				
Courses starting in June									
Kaplan Living Nottingham	Classic	06/06/20	05/09/20	13	1	£1,000	£1,447	n/a	£2,447
	Deluxe						£1,538	n/a	£2,538
	Studio						£1,837	n/a	£2,837
Kaplan Living Nottingham	Classic	06/06/20	26/12/20	29	2	£1,000	£2,767	£1,384	£5,151
	Deluxe						£2,903	£1,451	£5,354
Kaplan Living Nottingham	Classic	06/06/20	26/06/21	55	3	£1,000	£5,697	£2,848	£9,545
	Deluxe						£5,953	£2,977	£9,930
Kaplan Living Nottingham	Classic	06/06/20	04/09/21	65	4	£1,000	£6,823	£3,412	£11,235
	Deluxe						£7,127	£3,563	£11,690
	Studio						£8,123	£4,062	£13,185
Courses starting in July									
Kaplan Living Nottingham	Classic	18/07/20	05/09/20	7	0.5	£1,000	£433	n/a	£1,433
	Deluxe						£482	n/a	£1,482
	Studio						£643	n/a	£1,643
Kaplan Living Nottingham	Classic	18/07/20	26/06/21	49	2.5	£1,000	£5,021	£2,510	£8,531
	Deluxe						£5,249	£2,625	£8,874
Kaplan Living Nottingham	Classic	18/07/20	04/09/21	59	3.5	£1,000	£6,147	£3,074	£10,221
	Deluxe						£6,423	£3,211	£10,634
	Studio						£7,327	£3,664	£11,991

Accommodation for students under 18 years of age: where possible, the College will accommodate students under 18 years of age in a single-sex flat with other students under 18 years old. If this option is not available, we will notify the student's parents or legal guardian to offer alternative accommodation. Students aged under 18 on their start date are expected to live in College-arranged housing.

* Your £250 deposit will be returned to you when you move out of your room. Please note, your deposit will not be fully returned if the room is damaged or left in bad condition, or if there are any accommodation penalty charges or outstanding payments on your student account.

Please note: the College reserves the right to change the properties advertised and / or prices quoted. If this happens, alternative options of an equivalent standard will be made available at similar prices. All prices shown are correct at time of publication but are subject to change. Published August 2019.

How to book

Follow the simple steps below to book your accommodation. Use the answers to the right for more help.

1 Use the [Accommodation Dates and Prices](#) pages in this guide to choose the option that matches your course dates.

2 When applying to study on a course, you can indicate your preferred room type on the application form. We will then record your accommodation preferences and send you further information with your tuition offer letter.

OR

If you have already completed the course application form, you can complete the online [Accommodation Form](#) to indicate your accommodation preferences, based on the information given in this guide.

3 Once you have accepted your offer, we will be able to confirm your accommodation option. We will reserve a room for you and send you an Accommodation Pack. You will then need to complete the following steps in order to secure your booking:

- 1) Fill in your guarantor details on the Guarantor Declaration.
- 2) Both you (the tenant) and your guarantor will need to read and sign the Termination and Refund Policy, and then return it by the accommodation confirmation date, which can be found in the Pack. A third person must also witness the signatures, and provide their own details on the document.
- 3) If you have not done so already, you will also need to make a minimum first payment of £1000 to secure the room. This will be credited towards your overall accommodation fees.

4 When you are ready to come to the UK and have booked a flight, you will need to confirm your arrival details by completing the online [Pre-Arrival form](#). The College will be able to book and confirm transfers for you, and more details are provided in the Pre-Arrival Guide. Please submit your arrival details at least two weeks before you fly to ensure the College and your accommodation are prepared for your arrival

Accommodation guarantee

We can guarantee accommodation to all students who submit their Accommodation Form before the dates below, and have accepted their offer to study.

Accommodation start date	Accommodation guarantee deadline*
June 2020	1 st May 2020
July 2020	1 st June 2020

* While every effort will be made to allocate your first choice, we cannot guarantee this, and you may be offered another accommodation type or location. If you submit your form after the date listed, we cannot guarantee you accommodation, but will make every effort to find suitable housing for your studies at the College.

Questions and answers

What is a 'guarantor'?

A guarantor is someone who will be legally responsible for any accommodation fees you are unable to or fail to pay.

May I change the length of my accommodation?

You may not change your contract after you have booked and signed your Accommodation Agreement.

What is the Accommodation Agreement?

The Accommodation Agreement is a contract confirming the details of your accommodation. By signing your Accommodation Agreement, you are agreeing, under UK law, to pay for your accommodation for the full length of the accommodation contract.

What is the first payment?

The first payment is to secure your accommodation along with the signed accommodation agreement. The £1,000 first payment is then divided into £250 for the security deposit and £750 towards your accommodation fees.

What is evidence of payment?

Evidence of payment can be a copy of the payment receipt, bank statement, banker's draft, or via Flywire.

What happens if I miss the accommodation confirmation deadline?

You must complete the required steps in order to secure your booking. If you fail to do so by the accommodation confirmation date, your agreement may be cancelled and your room given to another student to book. If your Accommodation Agreement is cancelled, and you tell us that you would still like to book college accommodation, you will be offered the next available room. If you decide not to take this room, refund of any fees paid will only be granted in line with Kaplan International Pathways terms and conditions, and may be subject to an administration fee being deducted.

When can I move into my room?

You will be able to move into your room from the start date of your contract, but only if you have already sent us your signed Accommodation Agreement and first payment.

Can I get a refund if I leave the College?

If you leave the College for any reason after starting your course, your accommodation fees will not be refunded.

How to pay

Read the information below to find out how you can make payments towards your accommodation.

Payment structure

Course	First payment on signing agreement (includes the £250 deposit)	Remaining payments
All courses	£1,000 (minimum)	Depending on your accommodation option, pay the remaining amount when you arrive at the College and before your second term (if applicable)

How can I pay?

Before you arrive, you can make your first payment using one of the methods below:

Bank transfer / credit or debit card to Flywire.

1. Visit NTICnottingham.flywire.com
2. Choose your country and the amounts you are paying in Pounds Sterling
3. Choose your payment method and make your payment to Flywire
4. Enter the payer details and those of the student you are paying for
5. Track and confirm your payment by email, SMS or by logging into NTICnottingham.flywire.com

Remember to include evidence of your first payment when you return your signed Accommodation Agreement to reserve your chosen accommodation option. Remember to include your family name and student number (found on your offer letter) as payment reference.

When you arrive at the College, you can pay your remaining accommodation fees by Flywire.

Please note:

- The £250 deposit is used to book your accommodation and will be returned to you when you move out of your accommodation.
- Your deposit will not be fully returned if the room is damaged or left in bad condition, or if there are any accommodation penalty charges outstanding.
- If your visa application is unsuccessful, please send a copy of your visa refusal documents (or other evidence) to your Admissions Advisor for review. A decision will then be made regarding eligibility for refund in line with the company's terms and conditions.
- If we do not receive the first payment and signed Accommodation Agreement, you will not be able to move into your room.
- Students who are under the age of 18 on arrival in the UK may be asked to pay all their accommodation fees before they arrive.

Bank draft in Pounds Sterling payable to Nottingham Trent International College for the deposit.

Electronic Transfer in Pounds Sterling for the deposit to the following account:

Bank Account Name: Kaplan NT Ltd
Bank Name: HSBC Bank plc
Sort Code: 40-11-60
Bank Account Number: 00004057
BIC: HBUKGB4B
IBAN NO: GB66HBUK40116000004057
Bank Address: 60 Queen Victoria Street, London, EC4N 4TR



Find out more

Visit the links below or contact us for more information. We look forward to helping you make Nottingham your new home!

Useful links:

- 👉 kaplanpathways.life/ntic-housing
- 👉 kaplanpathways.com/ntic-applicants
- 👉 ntu.ac.uk/study-and-courses/international
- 👉 ntu.ac.uk/university-life-and-nottingham/nottingham
- 👉 experiencenottinghamshire.com/nottingham

Find us online: **nticnottingham**



#KaplanLife

Contact details

- ✉ Nottingham Trent International College
Belgrave Centre
Chaucer Street
Nottingham, NG1 5LT
- @ pathways.accommodation@kaplan.com

For accommodation queries:

📞 Central Accommodation Team: +44 (0)20 8727 3500

For arrival or any other queries:

📞 College: +44 (0)115 848 5867

👉 ntu.ac.uk/ntic

All information is correct at time of publication and is subject to change.
Published August 2019.